



**GOLIATH RESOURCES LIMITED**  
**Lucky Strike Property – February 26, 2018**

**New 3D Model of Large Porphyry Target Measuring  
2500 x 1500 x 500 Metres, Drill Ready & Open at Depth**

The newly discovered Prosperity Bullseye Zone on Goliath's 100% optioned Lucky Strike property is located in northwestern British Columbia. It is located in a world class geological terrane within the Skeena Arch, a belt-scale structural corridor that is associated with significant porphyry and related mineralization.

The Prosperity Bullseye Zone extends over 2.4 kilometres wide by 3.4 kilometres long and is defined by:

1. A 2000 by 400 metre soil anomaly that has a geochemical signature consistent with a porphyry system ([link to map](#)).
2. Coincident with the soil anomaly, a SkyTEM™ electromagnetic survey found concentric conductive zones flanking a magnetic high ([link to 3D model](#)) extending over 2500 x 1500 x 500 metres that remains open to depth. Together these indicate the presence of a porphyry ([link to image 1](#) + [link to image 2](#)).
3. The Prosperity Bullseye Zone is surrounded by two of the most prolific placer creeks in the district with coarse nuggets recovered over 6 ounces gold (see BC MINFILE No. 103I204, 103I050 and 103I207) and is believed to be the source of this gold ([link to map](#)).
4. Widespread, high-grade polymetallic veining, localized molybdenum in altered intrusives, and documented historic polymetallic porphyry veining strongly indicate the presence of a porphyry ([link to image](#)).

All the above indicate the presence of a large porphyry system at depth and provides for multiple strong drill ready targets for the planned inaugural 2018 drill program. With initial drilling success, the Prosperity Bullseye Zone porphyry target provides for an excellent opportunity to expand the zone along strike and to depth. This zone is located in a world class geological setting with road access and is in close proximity to major infrastructure.

For new maps and photos please go to the website at <https://goliathresourcesltd.com/>

**Contact Information:**

Roger Rosmus  
Chief Executive Officer  
[roger@goliathresources.com](mailto:roger@goliathresources.com)  
+1-416-488-2887 x222

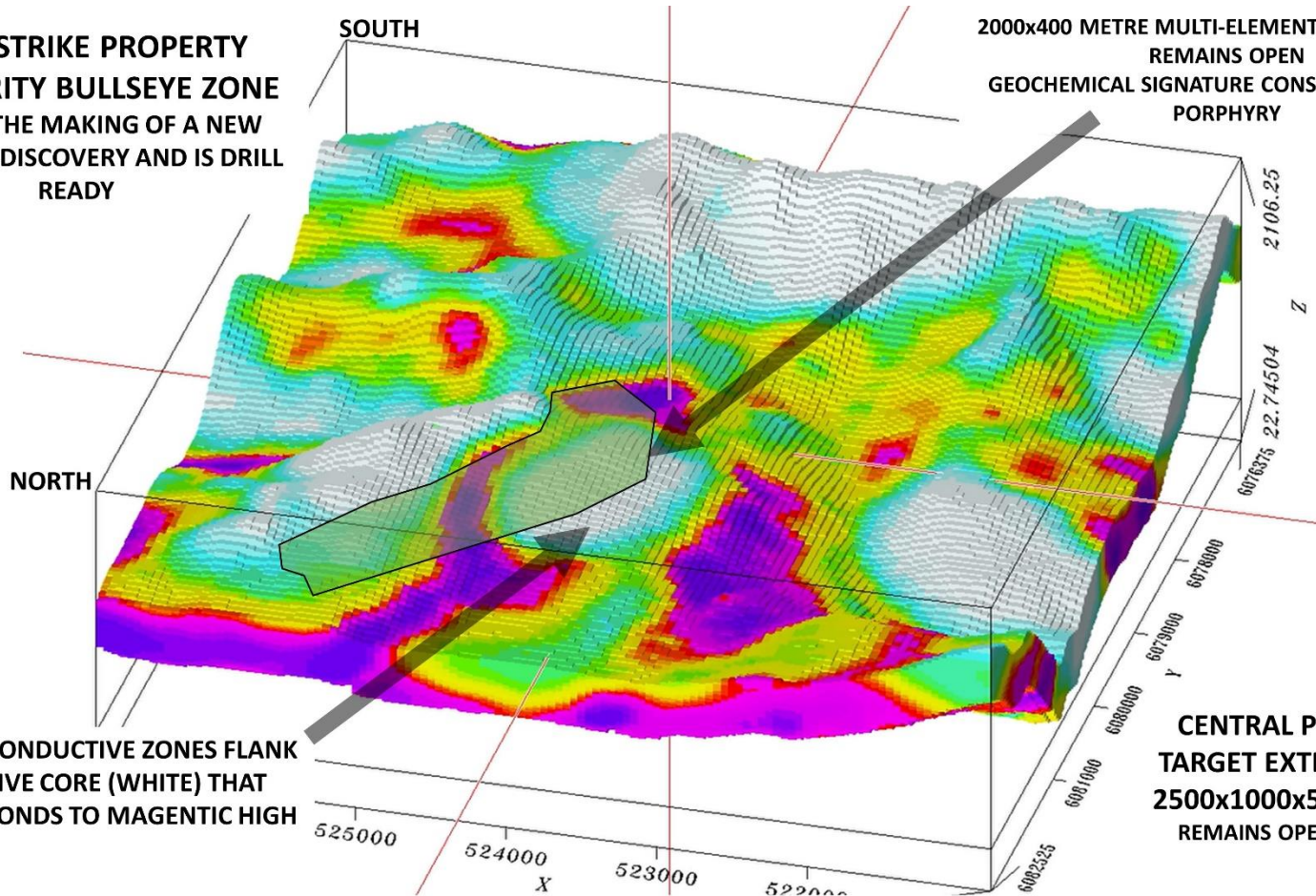
Neither the TSX Venture Exchange nor its Regulation Services Provider (as that term is defined in the policies of the TSX Venture Exchange) accepts responsibility for the adequacy or accuracy of this release. Certain disclosure in this release may constitute forward-looking statements that are subject to numerous risks and uncertainties relating to Goliath's operations that may cause future results to differ materially from those expressed or implied by those forward-looking statements. Readers are cautioned not to place undue reliance on these statements.

**LUCKY STRIKE PROPERTY  
PROSPERITY BULLSEYE ZONE  
HAS ALL THE MAKING OF A NEW  
PORPHYRY DISCOVERY AND IS DRILL  
READY**

**PURPLE CONDUCTIVE ZONES FLANK  
RESISTIVE CORE (WHITE) THAT  
CORRESPONDS TO MAGNETIC HIGH**

**2000x400 METRE MULTI-ELEMENT SOIL ANOMALY  
REMAINS OPEN  
GEOCHEMICAL SIGNATURE CONSISTENT WITH A  
PORPHYRY**

**CENTRAL PORPHYRY  
TARGET EXTENDS OVER  
2500x1000x500 METRES  
REMAINS OPEN TO DEPTH**



\*The reader is cautioned that geophysical anomalies are not directly indicative of mineralization, and may be caused by other geological bodies