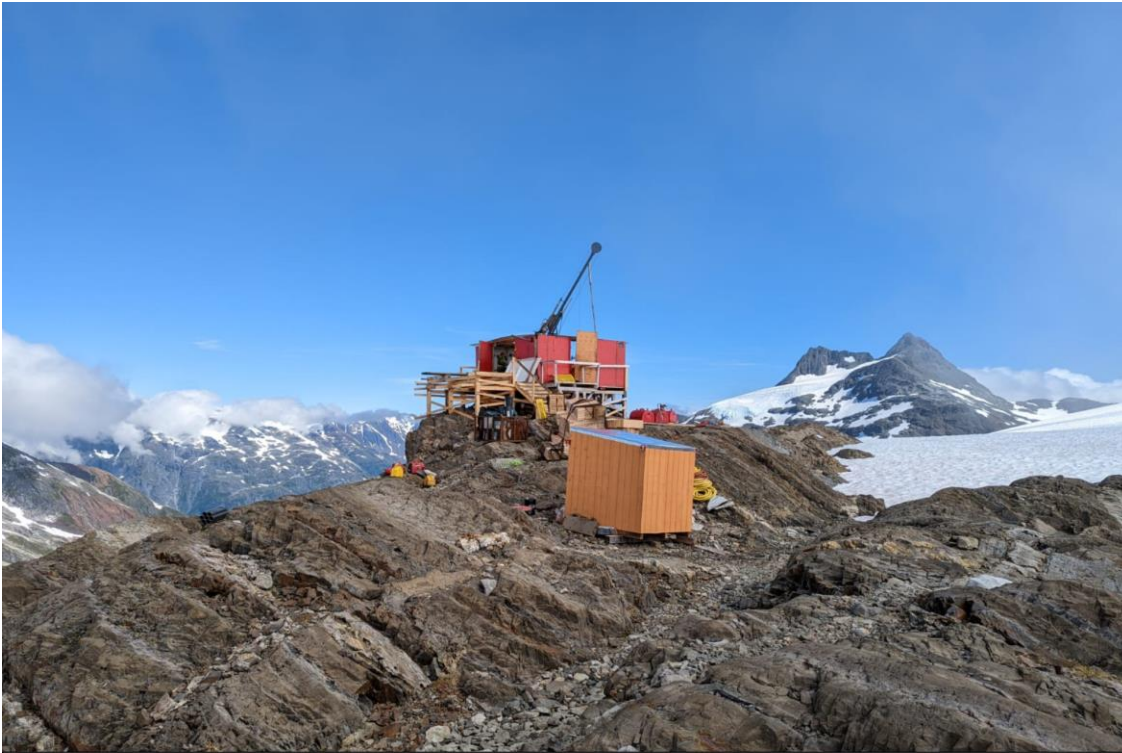




**GOLIATH**  
RESOURCES LIMITED

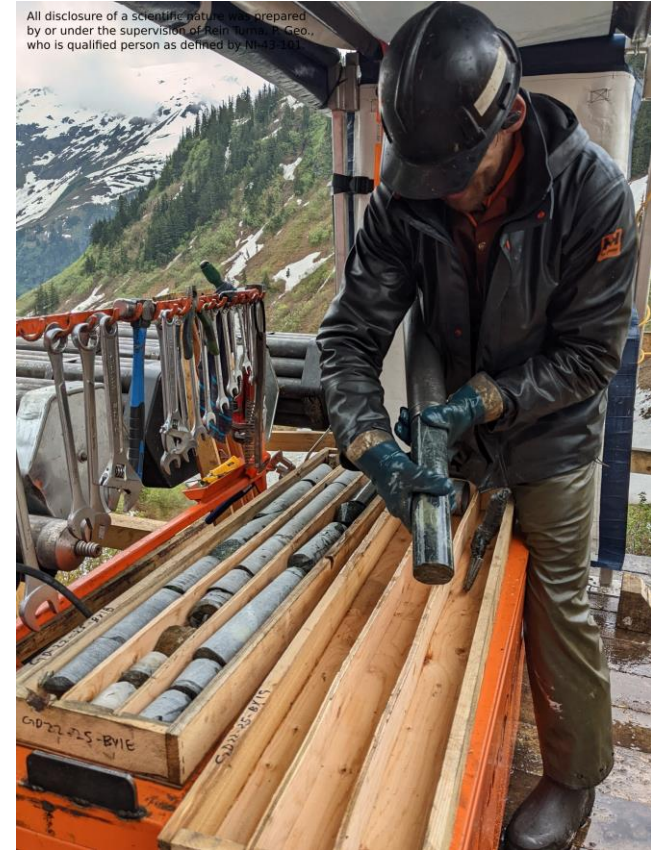
TSX-V: GOT OTCQB: GOTRF FSE: B4IF

## ON TRACK WITH DISCOVERY IN THE GOLDEN TRIANGLE, B.C.



Golddigger - Surebet Zone  
**Drilling on the Northwest Step-out Pad**

August 8, 2022





# FORWARD LOOKING STATEMENT

The content of information contained in this Presentation has not been approved by an authorised person within the meaning of the Financial Services and Markets Act 2000 ("FMSA"). Reliance upon this Presentation for the purpose of engaging in any investment activity may expose an individual to a significant risk of losing all of the property or other assets invested. If any person is in any doubt as to the contents of this Presentation, they should seek independent advice from a person who is authorized for the purposes of FMSA and who specialises in advising in investments of this kind. This Presentation is being supplied to you solely for your information.

While the information contained herein has been prepared in good faith, neither Goliath Resources Limited ("Company") nor its shareholders, directors, officers, agents, employees or advisers give, has given or has authority to give, any representations or warranties (express or implied) as to, or in relation to, the accuracy, reliability or completeness of the information in this Presentation, or any revision thereof, or of any written, audiovisual or oral information made or to be made available to any interested party or its advisers and liability therefore is expressly disclaimed.

This Presentation does not constitute, or form part of, an admission document, listing particulars or a prospectus relating to the Company, nor does it constitute, or form part of, any offer or invitation to sell or issue, or any solicitation of any offer to purchase or subscribe for, any shares in the Company nor shall it or any part of it, or the fact of its distribution, form the basis of, or be relied upon in connection with, or act as any inducement to enter into any contract therefore.

No reliance may be placed by an individual, interested party or its advisers for any purpose whatsoever on the information contained in this Presentation or on its completeness, accuracy or fairness thereof, nor is any responsibility accepted by the Company for any errors, misstatements in, or omission from, this Presentation or any direct or consequential loss however arising from any use of, or reliance on, this Presentation or otherwise in connection with it by an individual or interested party.

This Presentation may not be reproduced or redistributed, in whole or in part, to any other person, or published, in whole or in part, for any purpose without the prior consent of the Company. The contents of this Presentation are confidential and are subject to updating, completion, revision, further verification and amendment without notice.

This Presentation being distributed on request only to, and is directed at, authorized persons or exempt persons within the meaning of FSMA or any order made thereunder or to those persons falling within the following articles of the Financial Services and Markets Act 2000 (Financial Promotion) Order 2005 (as amended) (the "Financial Promotion Order"): Investment Professionals (as defined in Article 19(5)) and High Net Worth Companies (as defined in Article 49(2)). Persons who do not fall within any of these definitions should not rely on this Presentation nor take any action upon it but should return it immediately to the Company. This Presentation is exempt from the general restriction in section 21 of FMSA relating to the communication of invitations or inducements to engage in investment activity on the grounds that it is made only to certain categories of persons.

Neither this Presentation nor any copy of it should be distributed, directly or indirectly, by any means (including electronic transmission) to any persons with addresses in the United States of America (or any of its territories or possessions) (together the "US"), Canada, Japan, Australia, the Republic of South Africa, the United Kingdom or the Republic of Ireland, or to any corporation, partnership or other entity created or organised under the laws thereof, or in any other country outside the Republic of the Seychelles where such distribution may lead to a breach of any legal or regulatory requirement. The recipients should inform themselves about and observe any such requirements or relationship.

The Company's ordinary shares have not been, and are not expected to be, registered under the United States Securities Act 1933, as amended, (the "US Securities Act") or under the securities laws of any other jurisdiction, and are not being offered or sold, directly or indirectly, within or into the US, Canada, Japan, Australia, the Republic of South Africa, the United Kingdom or the Republic of Ireland or to, or for the account or benefit of, any US persons or any national, citizen or resident of the US, Canada, Japan, Australia, the Republic of South Africa, the United Kingdom or the Republic of Ireland, unless such offer or sale would qualify for an exemption from registration under the US Securities Act and/or any other applicable securities laws.

This Presentation or documents referred to in it contain forward-looking statements. These statements relate to the future prospects developments and business strategies of the Company and its subsidiaries (the "Group"). Forward-looking statements are identified by the use of, but not restricted to, such terms as "believe", "could", "envisage", "estimate", "potential", "intend", "may", "plan", "will" or the negative of those, variations or comparable expressions, including references to assumptions. The forward-looking statements contained in this Presentation are based on current expectations and are subject to risks and uncertainties that could cause actual results to differ materially from those expressed or implied by those statements. If one or more of these risks or uncertainties materialises, or if any underlying assumptions prove incorrect, the Group's actual results may vary materially from those expected, estimated or projected. Given these risks and uncertainties, potential investors should not place any reliance on forward-looking statements. These forward-looking statements speak only as at the date of this Presentation.

**METERS AND GRADES.** Widths are reported in drill core lengths and the true widths are estimated to be 80-90% and AuEq metal values are calculated using: AuEq metal values are calculated using: Au 1924.79 USD/oz, Ag 22.76 USD/oz, Cu 3.75 USD/lbs, Pb 2128.75 USD/ton and Zn 2468.50 USD/ton on December 23, 2023. There is potential for economic recovery of gold, silver, copper, lead, and zinc from these occurrences based on other mining and exploration projects in the same Golden Triangle Mining Camp where Goliath's project is located such as the Homestake Ridge Gold Project (Auryn Resources Technical Report, Updated Mineral Resource Estimate and Preliminary Economic Assessment on the Homestake Ridge Gold Project, prepared by Minefill Services Inc. Bothell, Washington, dated May 29, 2020). Here, AuEq values were calculated using 3-year running averages for metal price, and included provisions for metallurgical recoveries, treatment charges, refining costs, and transportation. Recoveries for Gold were 85.5%, Silver at 74.6%, Copper at 74.6% and Lead at 45.3%. It will be assumed that Zinc can be recovered with the Copper at the same recovery rate of 74.6%. The quoted reference of metallurgical recoveries is not from Goliath's Golddigger Project, Surebet Zone mineralization, and there is no guarantee that such recoveries will ever be achieved, unless detailed metallurgical work such as in a Feasibility Study can be eventually completed on the Golddigger Project. The potential quantity and grade are conceptual in nature, that there has been insufficient exploration to define a mineral resource and that it is uncertain if further exploration will result in the target being delineated as a mineral resource. Rein Turna P. Geo is the qualified person as defined by National Instrument 43-101, for Goliath Resource Limited projects, and supervised the preparation of, and has reviewed and approved, the technical information.



# BOARD & TEAM

## **Roger Rosmus**, MBA, Founder, CEO, Director

- >25 years of investment banking experience in the public and private sectors.

## **Graham C. Warren**, CPA, CMA, CFO, Director

- Senior financial executive with >30 years experience in the technology, mining, and oil and gas sectors.

## **Wayne Isaacs**, Director (Ind)

- >30 years of investment banking experience in the resource sector.

## **Rein Turna**, P. Geo., Director (Ind)

- >40 years experience in the mining industry.

## **Dr. Quinton Hennigh**, Technical Advisor

- World renowned exploration geologist with >30 years of experience with major miners Homestake, Newcrest and Newmont. CHM of Novo TSX.V: NVO

## **Dr. Venessa Bennett**, B.Sc. (Hons), Ph.D. , Advanced Diploma in GIS/RS, Advisor

- >25 years experience in geosciences mining industry.

## **Bill Chornobay**, Program Manager

- >30 years proven track record; discoveries resulting in ~1 billion dollars in value.



# CAPITAL STRUCTURE

SHARE STRUCTURE	
<b>SHARES ISSUED &amp; OUTSTANDING</b>	<b>106,798,792</b>
WARRANTS OUTSTANDING	19,760,200
OPTIONS OUTSTANDING (avg. @ \$1.11)	10,396,890
<b>FULLY DILUTED</b>	<b>136,955,882</b>
<b>BOD, Management &amp; Team</b>	(P/D) <b>19.0%</b>
<b>Crescat Capital LLC</b>	(P/D) <b>18.4%</b>
<b>Strategic/Institution</b>	(P/D) <b>9.9%</b>
<b>Mr. Rob McEwen</b>	(P/D) <b>5.0%</b>
<b>Mr. Eric Sprott</b>	<b>3.5%</b>
<b>Warrants in the money (avg. @ \$0.52)</b>	<b>\$8,000,000</b>
<b>Fully Diluted – Options &amp; Warrants (avg. @ \$0.79)</b>	<b>\$24,000,000</b>

April 11/24 Close @ \$0.92 - 52 week high @ \$1.13 - 52 week low \$0.53 - 52 week volume 79,957,573 VWAP @ \$0.80

Actual drill time on project



Historic drilling as early as 1944

Historic drilling as early as 1955

No historic drilling  
**ORIGINAL DISCOVERY**

4 Months 5,332 m 24 holes  
8 Months 29,406 m 84 holes  
**12 Months 58,071 m 182 holes**

12 Months

~ 1,000 m

~ 2,000 m

**REMAINS OPEN**

24 Months

~ 18,000 m

Market Cap after ~ 60,000 m of drilling

**C\$ 336 M** (2019-09-30)

**C\$ 321M** (2020-09-30)

**C\$ 117 M** (2024-01-26)

36 Months

~ 86,000 m

~ 136,000 m

**EXCELLENT CONTINUITY**

~ 100 m drill spacing within 1.8 km<sup>2</sup> area with 10 mineralized veins identified to date

48 Months

~ 202,000 m

~ 321,000 m

**EXCELLENT METALLURGY**

Recovery at 327 µm crush:  
92.2 % Gold → 48.8 % Free Gold  
86.5 % Silver  
94.2 % Lead  
96.9 % Zinc

60 Months

~ 302,000 m

72 Months

Acquired by **KINROSS**  
for C\$ 1.8 billion  
with 340,000 m drilled from 794 holes

~821,000 m

**58,071 m drilled from 182 holes in 12 months**

Current Market Cap

**C\$ 1,800 M** (2021-12-08)

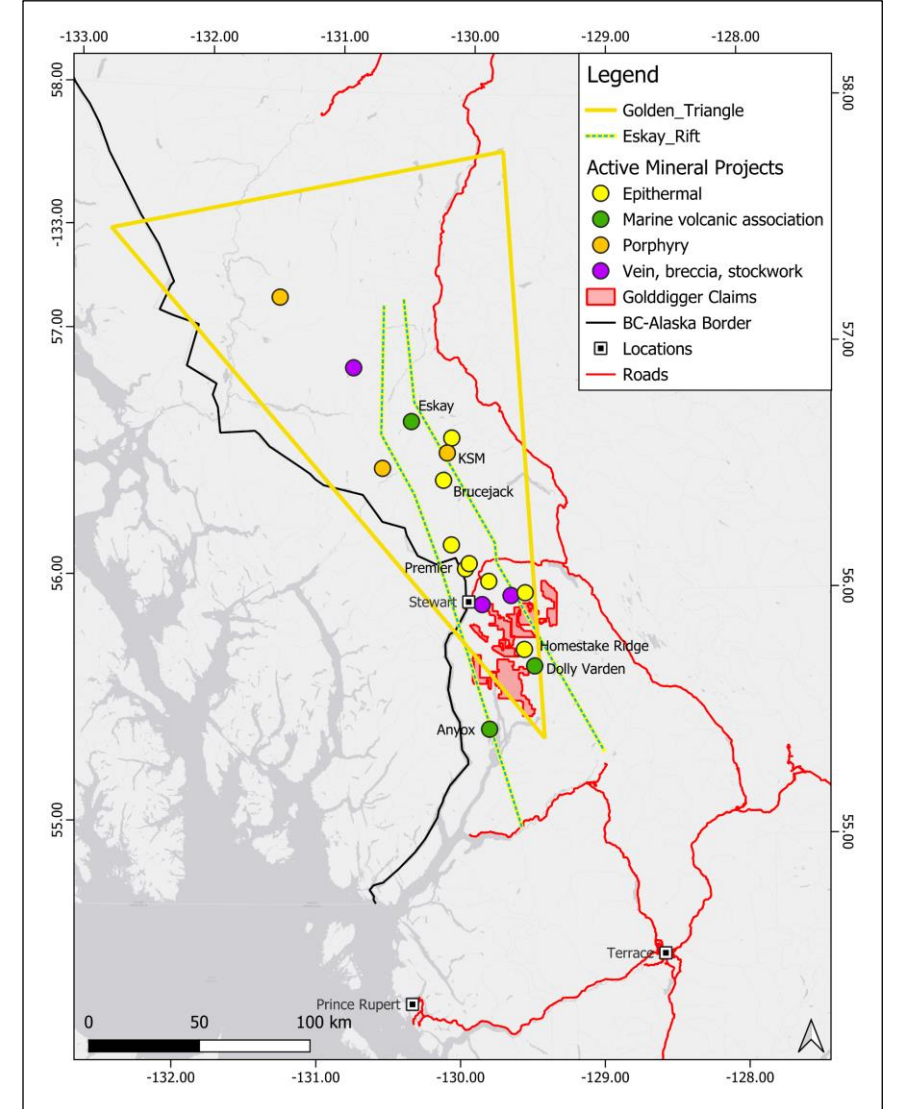
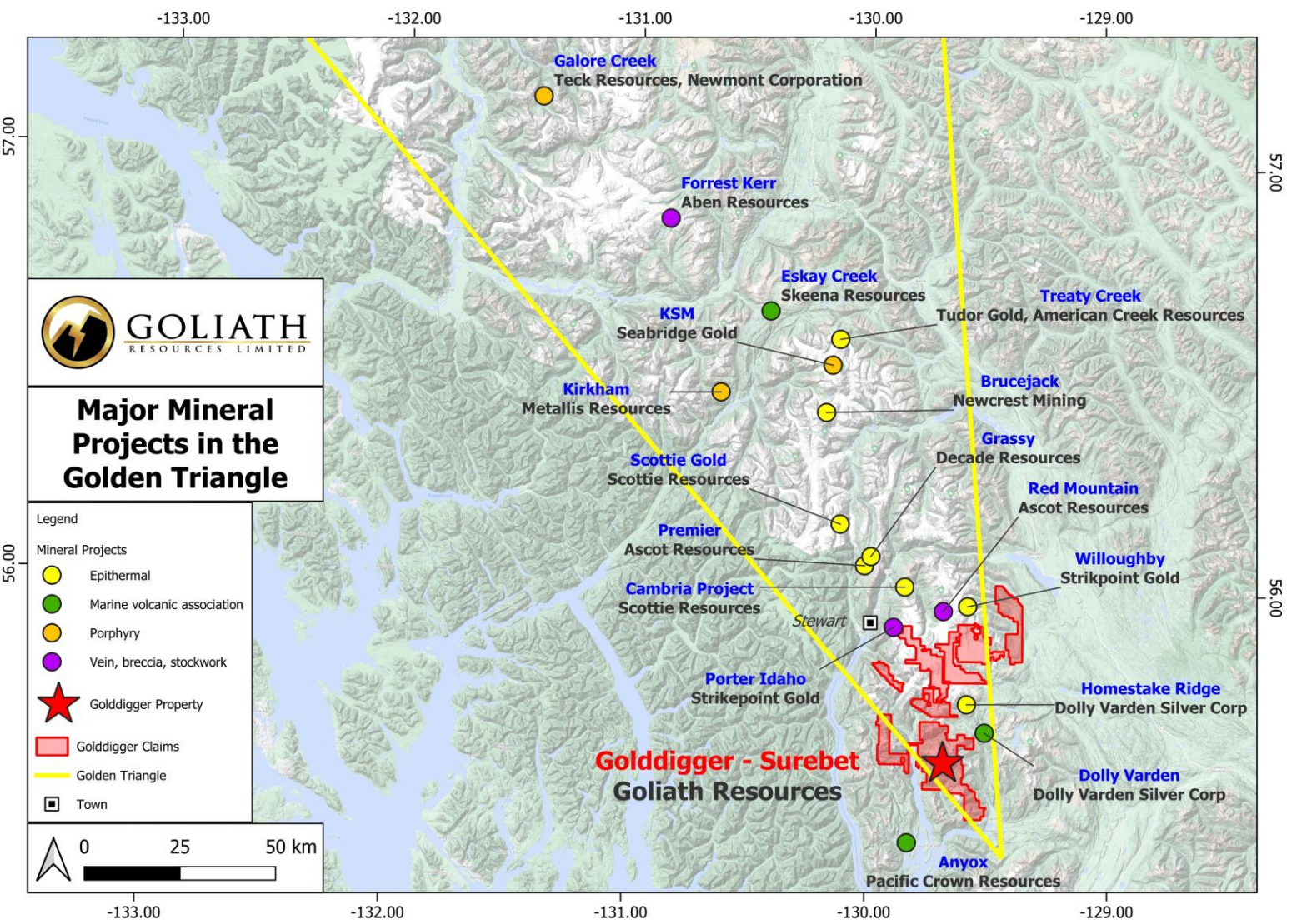
**C\$ 932 M**

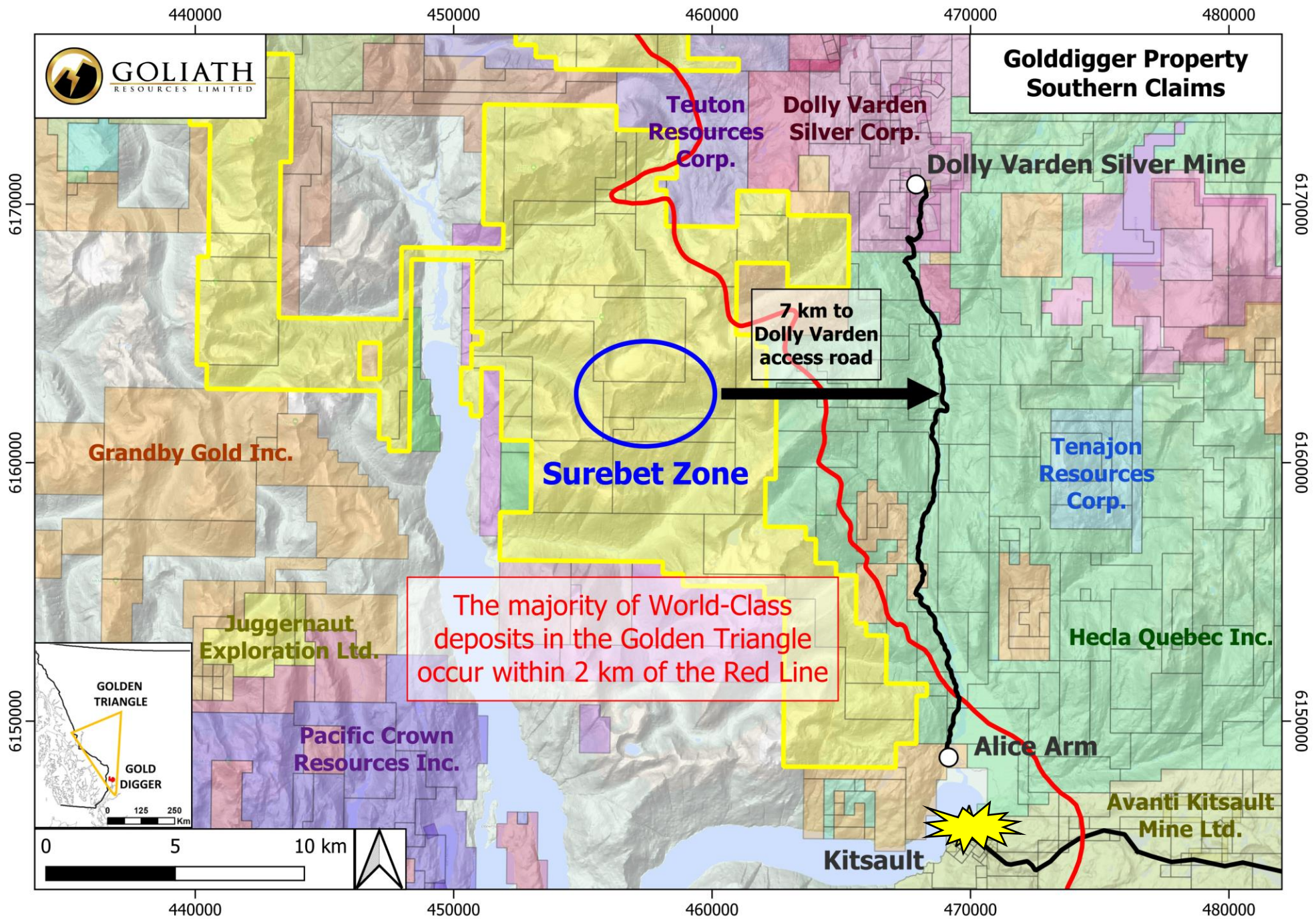
**C\$ 85 M**



# GOLDDIGGER PROPERTY – Golden Triangle

Option to earn 100%







# GOLDDIGGER PROPERTY – Surebet Discovery



TSX-V: GOT OTCQB: GOTRF FSE: B4IF

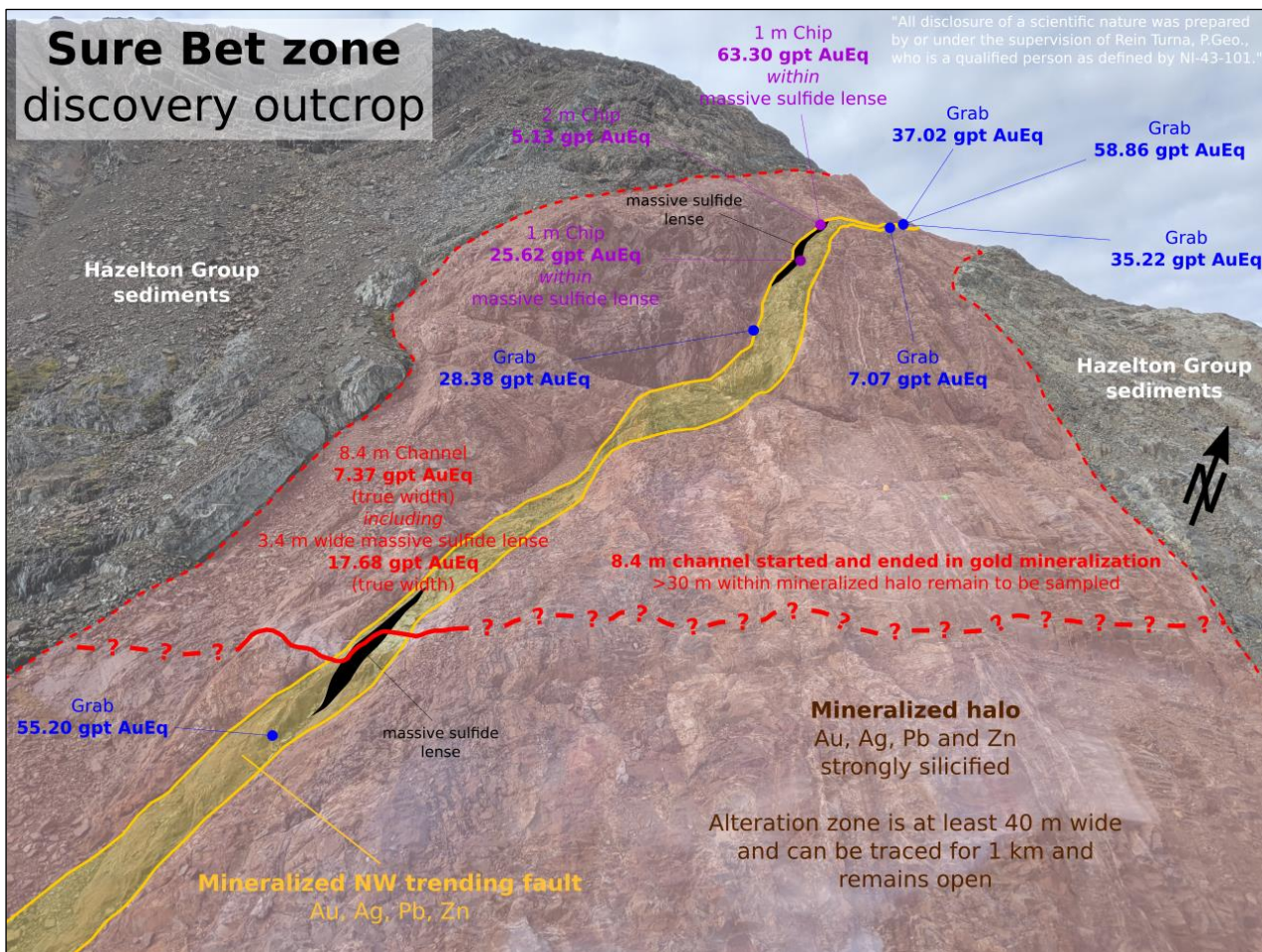
- Surebet Zone has 1 km of strike and 1.1 km down dip at surface with 700 m vertical relief with exceptional continuity and remains open.
- >65,000 meters diamond drilling in three seasons (2021 - 2023) confirming a mineralized area over 1.8 sqkm or >336 NFL fields that contain multiple extensive stacked bonanza-grade veins within 650 meters from surface
- Extensive Porphyry feeder source for the high-grade gold mineralizing fluids confirmed by Surebet Zone by Colorado School of Mines study.
- Exceptional Gold recoveries of 92.2% with 48.8% being free gold from gravity @ 327-micron crush; no cyanide required to recover the gold.
- 10 separate high-grade gold veins/shears that remain open have been identified and modeled from over 430 mineralized pierce points.
- Excellent infrastructure nearby and project sits on tidewater.



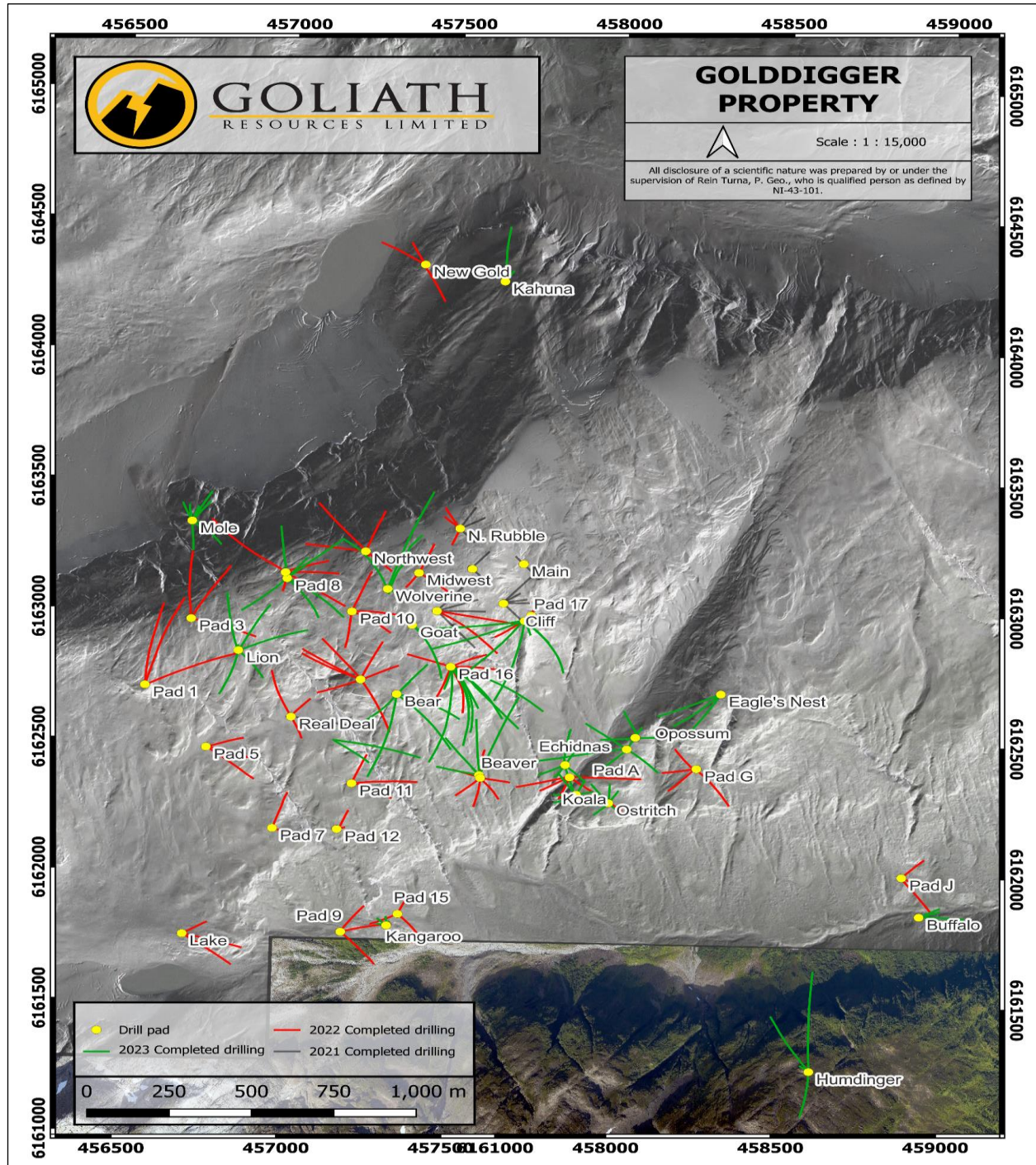


# GOLDDIGGER PROPERTY – Golden Triangle

## Surebet Zone - Geological Overview



**2021 – black drill traces**  
**2022 – red drill traces**  
**2023 – green drill traces**





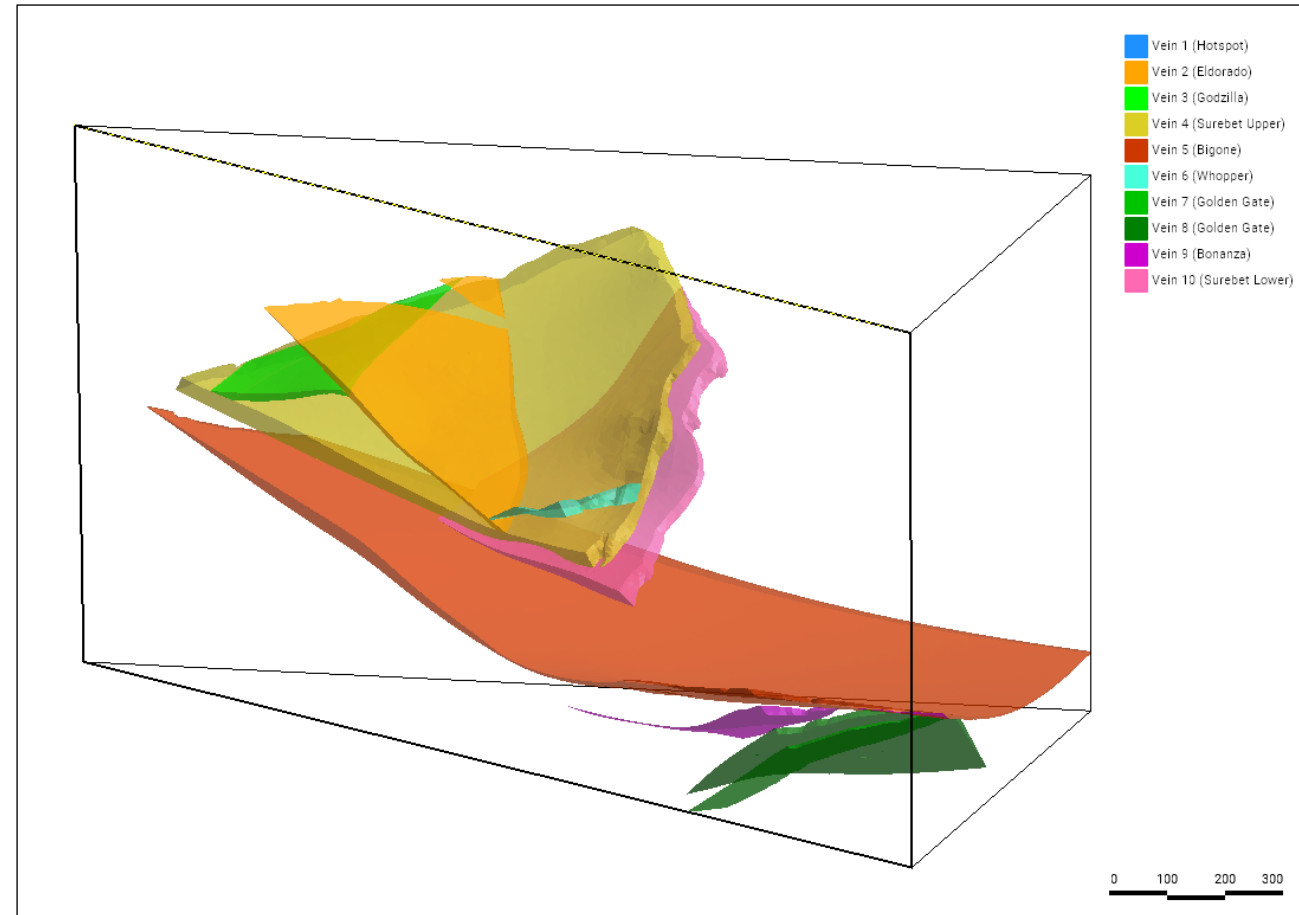
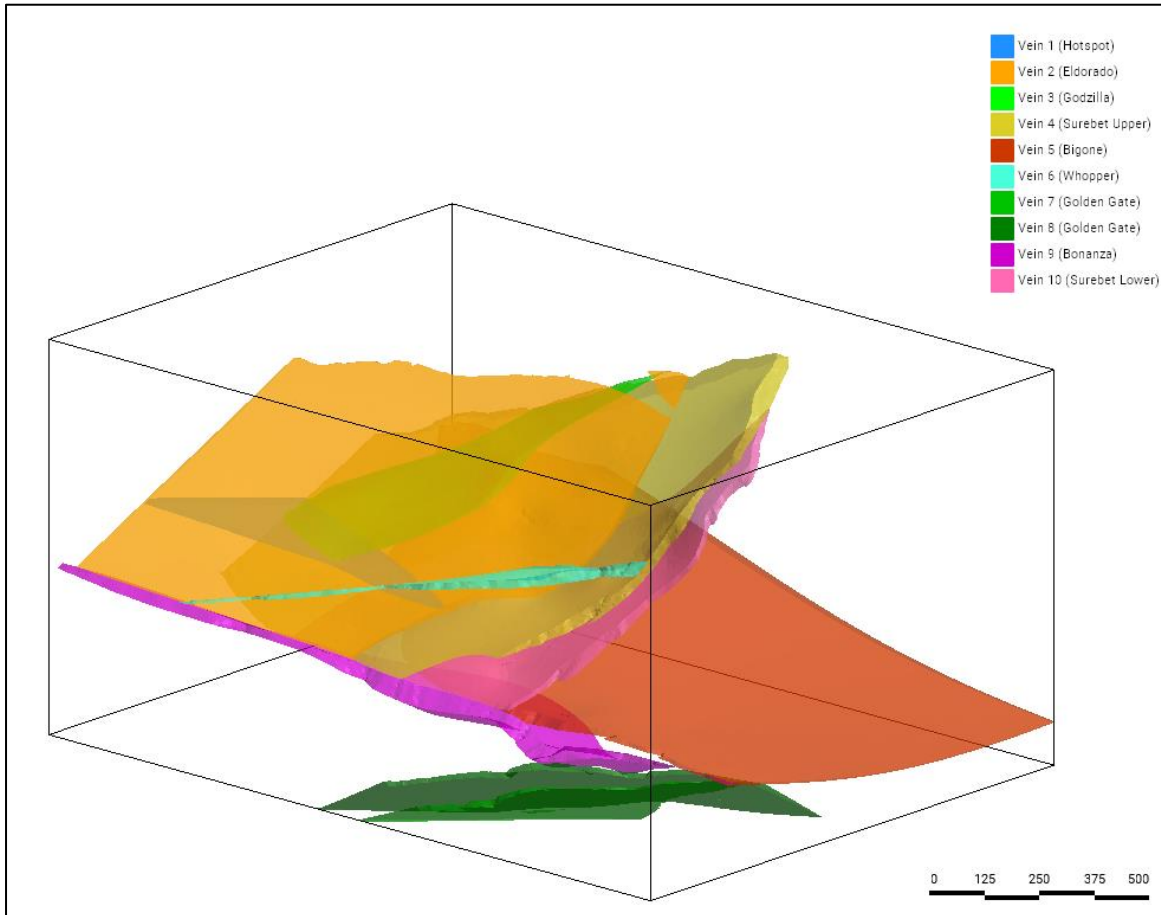
# GOLDDIGGER PROPERTY – Surebet Discovery

## Most Significant Intercepts Over 1.8 sqkm Of Mineralization In 4 Separate Zones

Drill Hole	High Grade Interval	Zone	Grams * Meters AuEq	Visible Gold
1 GD-23-180	65 g/t AuEq over 7.9m	Surebet Lower	513	Multiple up to 11 mm
2 GD-23-157	21.08 g/t AuEq over 23m	Surebet Upper	485	Multiple
3 GD-23-173	14.68 g/t AuEq over 26.89m	Surebet Upper	395	Multiple up to 0.7 mm
4 GD-23-197	11.54 g/t AuEq over 27m	Bonanza	312	Abundant up to 4 mm
5 GD-22-58	24.78 g/t AuEq over 11m	Surebet Upper	273	Multiple flakes
6 GD-21-03	6.37 g/t AuEq over 35.72m	Surebet Upper	228	None reported
7 GD-22-49	21.30 g/t AuEq over 7.77m	Golden Gate Lower	166	Multiple flakes
8 GD-22-100	13.53 g/t AuEq over 11m	Surebet Lower	149	None reported
9 GD-22-48	12.61 g/t AuEq over 11m	Surebet Upper	139	None reported

# Updated Conceptual Structural Vein Model

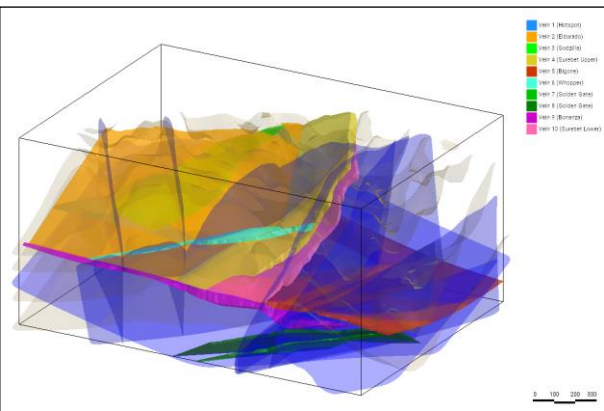
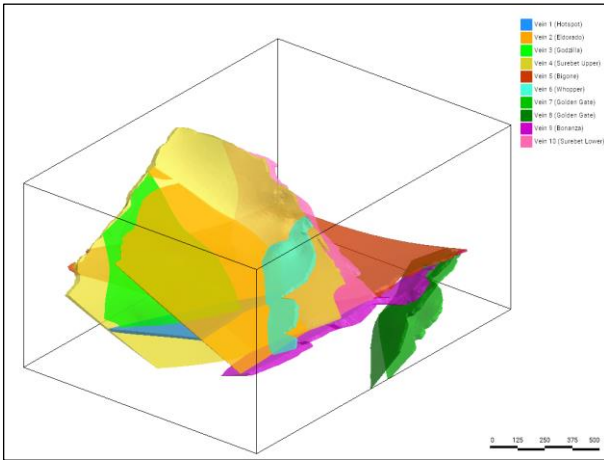
## 10 Veins Based on 2021 – 2023 Drill (230 Intervals) And Structural Data



The potential quantity and grade ranges are conceptual in nature, and that there has been insufficient exploration to define a mineral resource and that it is uncertain if further exploration will result in the Surebet Discovery being delineated as a NI 43-101 compliant mineral resource and is subject to change. Goliath's conceptual Leap Frog structural vein/shear model takes into consideration and is based on: all structural data collected from surface and logged drill core (incl. oriented core), specific gravity (SG) of 2.93 x cubic meters from the area drilled, weighted average of all mineralized grades/widths from all 222 diamond drill holes totaling over 432 pierce points assayed inclusive of the 2023 program. Rein Turna P. Geo is the qualified person as defined by National Instrument 43-101, for Goliath Resource Limited projects, and supervised the preparation of, and has reviewed and approved, the technical information.

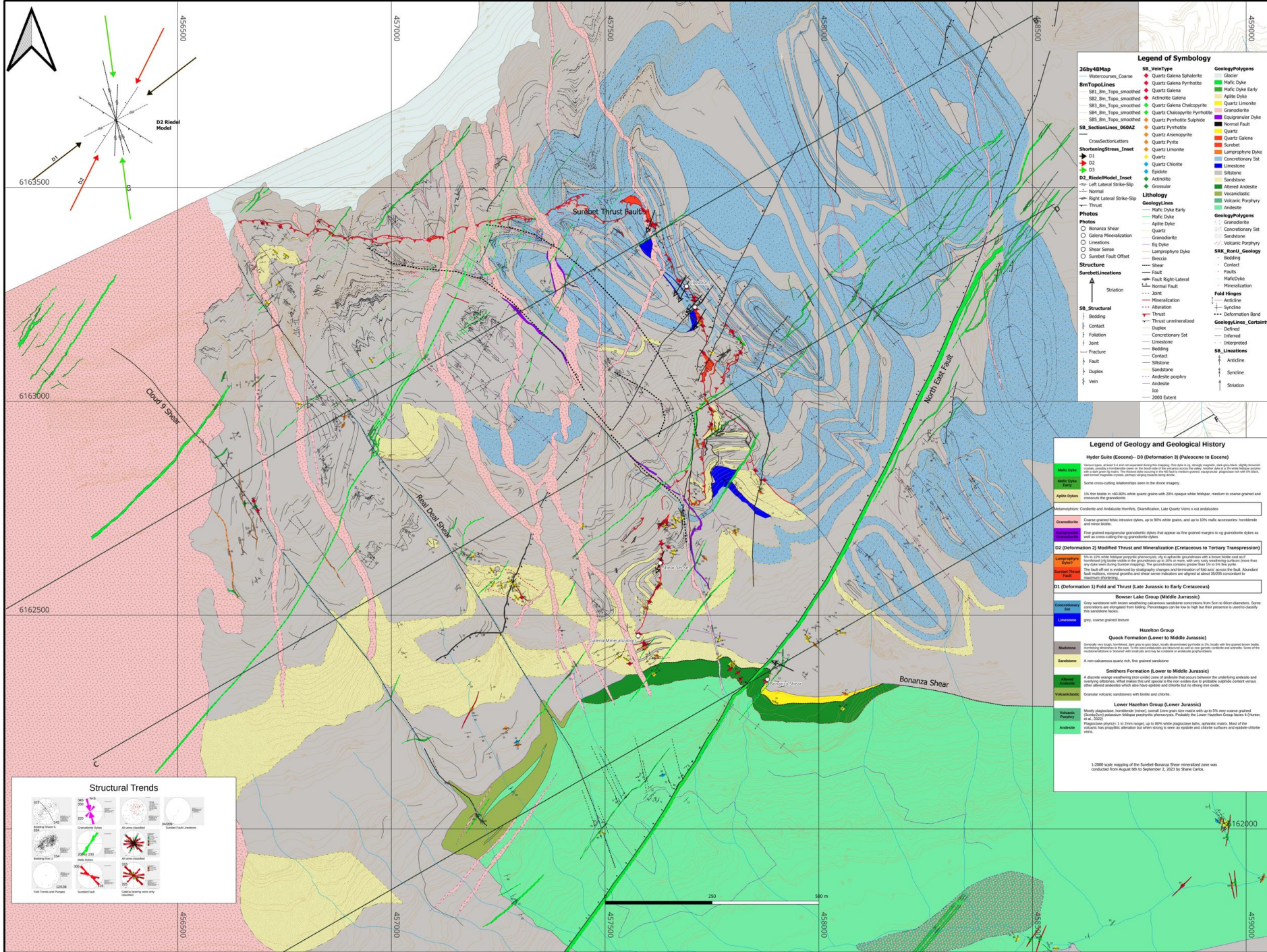
# Updated Conceptual Structural Vein Model

## 10 Veins Indicating Potential Range Of 78 - 97 Million Tonnes



- Surebet Zone, now Surebet Upper - 71 intercepts (28 – 35 Mt); avg. 4.10 – 4.82 g/t AuEq over 4.3 – 5.0 meters. Intercepts up to 20.87 g/t AuEq over 23 meters.
- Bonanza - 58 intercepts (12 – 16 Mt); avg. 2.78 – 3.27 g/t AuEq over 3 - 4 meters. Intercepts up to 11.54 g/t AuEq over 27 meters.
- Big One - 17 intercepts (12 – 15 Mt); avg. 2.85 – 3.35 g/t AuEq over 2.1 – 2.5 meters. Intercepts up to 6.75 g/t AuEq over 3 meters.
- Eldorado - 15 intercepts (8 - 11 Mt); avg. 2.81 – 3.31 g/t AuEq over 1.9 - 2.2 meters. Intercepts up to 11.39 g/t AuEq over 3 meters.
- Surebet Lower - 18 intercepts (5 - 7 Mt); avg. 7.12 – 8.37 g/t AuEq over 3.7 – 4.3 meters. Intercepts up to 64.99 g/t AuEq over 7.9 meters.
- Goldzilla - 19 intercepts (4 - 5 Mt); avg. 3.03 – 3.56 g/t AuEq over 2.1 – 2.5 meters. Intervals up to 4.55 g/t AuEq over 3 meters.
- Golden Gate Upper & Golden Gate Lower – 26 intercepts (4 – 5 Mt); avg. 3.58 – 4.21 g/t AuEq over 1.5 – 1.8 meters. Intervals up to 21.19 AuEq over 7.77 meters.
- Hotspot 2 intervals (2 - 3 Mt); avg. 1.03 – 1.22 AuEq over 0.85 – 1 meters. Intervals up to 1.22 g/t AuEq over 1 meter.
- Whopper 4 intervals (1 - 2 Mt); avg. 4.47 – 5.26 g/t AuEq over 5.8 – 6.8 meters. Intervals up to 13.60 over 4 meters.

The potential quantity and grade ranges are conceptual in nature, and that there has been insufficient exploration to define a mineral resource and that it is uncertain if further exploration will result in the Surebet Discovery being delineated as a NI 43-101 compliant mineral resource and is subject to change. Goliath's conceptual Leap Frog structural vein/shear model takes into consideration and is based on: all structural data collected from surface and logged drill core (incl. oriented core), specific gravity (SG) of 2.93 x cubic meters from the area drilled, weighted average of all mineralized grades/widths from all 222 diamond drill holes totaling over 432 pierce points assayed inclusive of the 2023 program. Rein Turna P. Geo is the qualified person as defined by National Instrument 43-101, for Goliath Resource Limited projects, and supervised the preparation of, and has reviewed and approved, the technical information.



### Legend of Symbology

<b>360y48Map</b>	<b>SB_VeinType</b>	<b>GeologyPolygons</b>
Substratum_Coarse	Quartz Galena Sphalerite	Galena
<b>8mTopoLines</b>	Quartz Galena Pyrrhotite	Mafic Dyke
SB1_8m_Topo_smoothed	Quartz Galena	Mafic Dyke Early
SB2_8m_Topo_smoothed	Actinolite Galena	Aplitic Dyke
SB3_8m_Topo_smoothed	Quartz Galena Chalkopyrite	Quartz Limonite
SB4_8m_Topo_smoothed	Quartz Chalkopyrite Pyrrhotite	Granoblastic
SB5_8m_Topo_smoothed	Quartz Pyrrhotite Sphalerite	Concretionary Set
<b>SB_SectionLines_660AZ</b>	Quartz Pyrrhotite	Esogranular Dyke
CrossSectionLetters	Quartz Ankerophyte	Normal Fault
<b>ShorteningStress_Inset</b>	Quartz Pyrrh	Quartz
D1	Quartz Limonite	Lamprophyne Dyke
D2	Quartz Chlorite	Concretionary Set
D3	Epoxide	Limestone
<b>D2_RiederModel_Inset</b>	Actinolite	Sandstone
Left Lateral Strike-Slip	Amorphous	Sandstone
Normal	Amorphous	Altered Andesite
Right Lateral Strike-Slip	Amorphous	Volcanic
Thrust	Amorphous	Volcanic Porphyry
<b>Lithology</b>	Amorphous	Andesite
Mafic Dyke Early	Amorphous	Andesite
Mafic Dyke	Amorphous	Andesite
Aplitic Dyke	Amorphous	Andesite
Quartz	Amorphous	Andesite
Granoblastic	Amorphous	Andesite
Esogranular Dyke	Amorphous	Andesite
Normal Fault	Amorphous	Andesite
Quartz	Amorphous	Andesite
Lamprophyne Dyke	Amorphous	Andesite
Concretionary Set	Amorphous	Andesite
Limestone	Amorphous	Andesite
Sandstone	Amorphous	Andesite
Altered Andesite	Amorphous	Andesite
Volcanic	Amorphous	Andesite
Volcanic Porphyry	Amorphous	Andesite
Andesite	Amorphous	Andesite
<b>GeologyLines</b>	Amorphous	Andesite
Mafic Dyke Early	Amorphous	Andesite
Mafic Dyke	Amorphous	Andesite
Aplitic Dyke	Amorphous	Andesite
Quartz	Amorphous	Andesite
Granoblastic	Amorphous	Andesite
Esogranular Dyke	Amorphous	Andesite
Normal Fault	Amorphous	Andesite
Quartz	Amorphous	Andesite
Lamprophyne Dyke	Amorphous	Andesite
Concretionary Set	Amorphous	Andesite
Limestone	Amorphous	Andesite
Sandstone	Amorphous	Andesite
Altered Andesite	Amorphous	Andesite
Volcanic	Amorphous	Andesite
Volcanic Porphyry	Amorphous	Andesite
Andesite	Amorphous	Andesite
<b>Photos</b>	Amorphous	Andesite
Bonanza Shear	Amorphous	Andesite
Galena Mineralization	Amorphous	Andesite
Lineations	Amorphous	Andesite
Shear Sense	Amorphous	Andesite
Sunbet Fault Offset	Amorphous	Andesite
<b>Structure</b>	Amorphous	Andesite
<b>SunbetLineations</b>	Amorphous	Andesite
Stratation	Amorphous	Andesite
<b>SB_Structural</b>	Amorphous	Andesite
Bedding	Amorphous	Andesite
Contact	Amorphous	Andesite
Foliation	Amorphous	Andesite
Joint	Amorphous	Andesite
Fracture	Amorphous	Andesite
Fault	Amorphous	Andesite
Duplex	Amorphous	Andesite
Vein	Amorphous	Andesite
<b>SB_Lineations</b>	Amorphous	Andesite
Bedding	Amorphous	Andesite
Contact	Amorphous	Andesite
Foliation	Amorphous	Andesite
Joint	Amorphous	Andesite
Fracture	Amorphous	Andesite
Fault	Amorphous	Andesite
Duplex	Amorphous	Andesite
Vein	Amorphous	Andesite

### Legend of Geology and Geological History

**Hydrar Suite (Eocene)- D3 (Deformation 3) (Paleocene to Eocene)**

Hydrar Suite (Eocene)- D3 (Deformation 3) (Paleocene to Eocene) includes massive quartz veins, quartz veins, and quartz veins with various mineralizations. Some cross-cutting relationships seen in the above imagery.

**Albite Dykes**

1% thin dykes in v40-80% white quartz with 20% opaque white feldspar; medium to coarse grained and massive to granoblastic.

**Granoblastic**

Coarse grained felsic igneous dykes, up to 80% white quartz, and up to 20% magmatic accessories; hornblende and minor biotite.

**Esogranular Dykes**

Fine grained esogranular granoblastic dykes that appear as the granoblastic margins to the granoblastic dykes as well as cross-cutting the quartz veins.

**D2 (Deformation 2) Modified Thrust and Mineralization (Cretaceous to Tertiary Transpression)**

1% to 2% white to yellow porphyroclasts, 1% to 2% white quartz with a lower feldspar content. Some dykes are cross-cutting the quartz veins. The granoblastic margins to the quartz veins are cross-cutting the quartz veins.

**D1 (Deformation 1) Field and Thrust (Late Jurassic to Early Cretaceous)**

**Bower Lake Group (Middle Jurassic)**

Gray sandstone with lower weathering calcareous sandstone; conglomerates from 5m to 10m diameter. Some dykes are cross-cutting the quartz veins. Porphyroclasts can be low to high but their presence is used to classify this sandstone type.

**Quick Formation (Lower to Middle Jurassic)**

Generally very high, horizontal, fine to very fine grained, highly siliceous sandstone. The Quick Formation is a non-cyclical quartz-rich, fine grained sandstone.

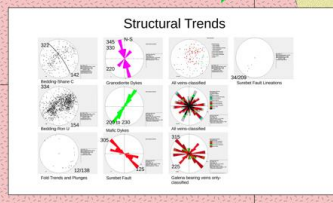
**Smithers Formation (Lower to Middle Jurassic)**

A diverse range weathering (see color) zone of calcareous that occurs between the underlying andesite and overlying calcareous. The Smithers Formation is a calcareous sandstone with varying degrees of calcareous content. Other altered andesites which also have epidote and chlorite but no strong iron oxide.

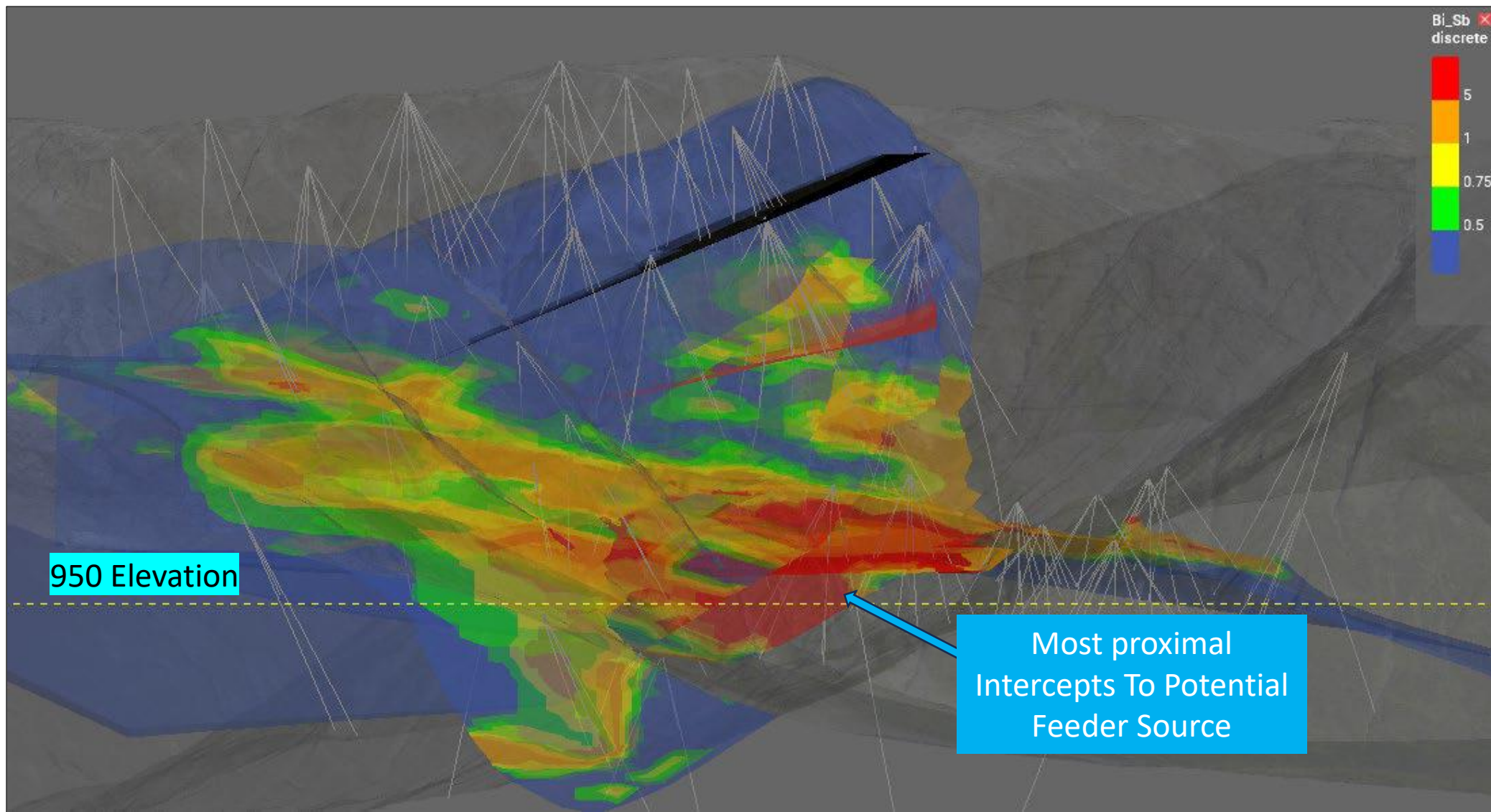
**Lower Hazelton Group (Lower Jurassic)**

Mostly oligoclase, hornblende, pyroxene, and quartz. The Lower Hazelton Group is a calcareous sandstone with varying degrees of calcareous content. The Lower Hazelton Group is a calcareous sandstone with varying degrees of calcareous content.

1:2000 scale mapping of the Sunbet-Bonanza Shear mineralized zone was conducted from August 08 to September 2, 2023 by Shane Carlos.



# Zonation / Vectoring Assessment: Bi/Sb Interpolation





# MODELING & GEOCHEMICAL TEAM

Off seasons focused on geochemical investigations (ongoing), updating of the geologic model (ongoing), metallurgical studies, the planning (ongoing) of a 2024 summer drill program and exploration sampling program.

Updating of the geologic model and the overall understanding of the mineralization has become a collaborative effort between several contractors and universities including:

- The Goliath geologic team;
- Archer, Cathro & Associates (1981) Limited – Leapfrog model, regional structural mapping and mineralization;
- SRK Consulting (Canada) Inc. – Preliminary structural interpretation of the Surebet Zone;
- Colorado School of Mines – Geochemical, petrological and geochronological studies;
- Drone North – Detailed drone imagery;
- Oriented Targeting Solutions LLC (OTS) – structural geometry from core; and
- Carlos Gold – Detailed structural and lithologic mapping of the Surebet Zone.



458750

459000

459250



**Golddigger Property**  
**Jackpot Zone**

Scale : 1 : 4,000

All disclosure of a scientific nature was prepared by or under the supervision of Rein Turna, P. Geo., who is qualified person as defined by NI-43-101.

**REMAINS OPEN**

**ST116183**  
**636 gpt Au**  
**1690 gpt Ag**  
**7.96% Cu**  
**2.22 % Pb**

**Y607989**  
**13.50 gpt Au**  
**32.10 gpt Ag**  
**0.09% Cu**  
**0.42 % Pb**

**Y607978**  
**6.90 gpt Au**  
**333 gpt Ag**  
**0.21% Cu**  
**0.49 % Pb**

**ST112903**  
**8.43 gpt Au**  
**694.00 gpt Ag**  
**0.39% Cu**  
**0.47 % Pb**

**Y607977**  
**44.40 gpt Au**  
**1629 gpt Ag**  
**5.22% Cu**  
**2.24 % Pb**

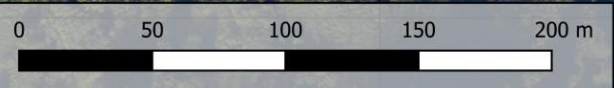
**Chips and Grabs Au (gpt)**

- 0.5 - 1.0
- 1.0 - 2.5
- 2.5 - 5.0
- 5.0 - 10.0
- > 100

--- Shear mapped on surface

● Planned drill pad

— 2024 Planned drill hole



458750

459000

459250

# Jackpot Zone

- Insitu grab sample assayed 21.5 oz/t AuEq or 667.40 gpt AuEq (636.00 gpt Au, 1,690.00 gpt Ag, 7.96 % Cu, 2.22 % Pb); comes from a 30 cm wide quartz vein.
- Shear comprised of strongly silicified Porphyritic Andesite within the Hazelton Volcanics and 1 km east of Pad A at Surebet Zone.
- The stockwork of veins are near vertical and strike north-south hosted within a broader shear zone that can be traced for more than 500 meters with 400 meters of vertical relief
- 2024 proposed drill plan, looking to expand Surebet discovery and possible Porphyry feeder source.



# GOLDDIGGER PROPERTY – Golden Triangle

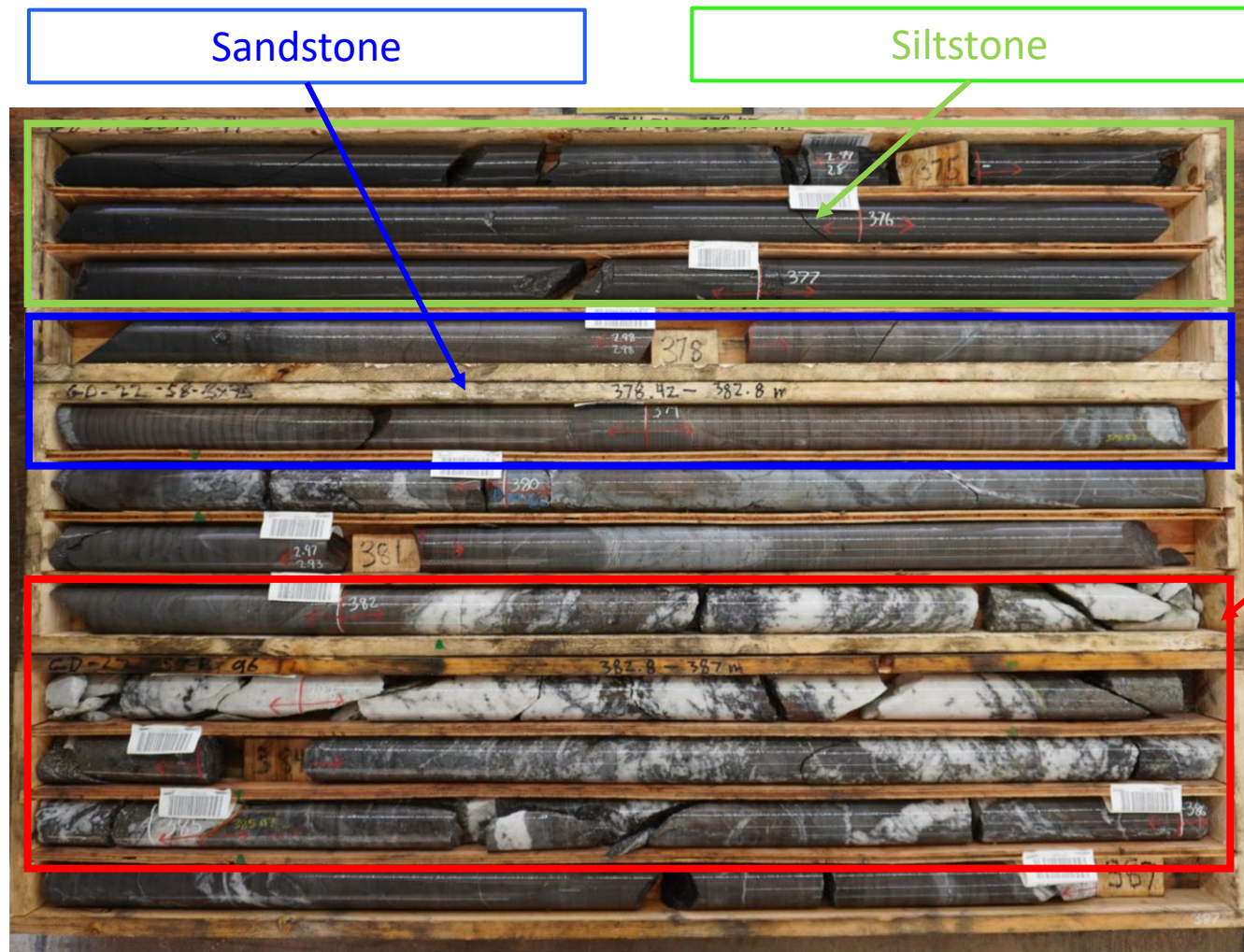



## Surebet Zone Core

Sandstone


Siltstone

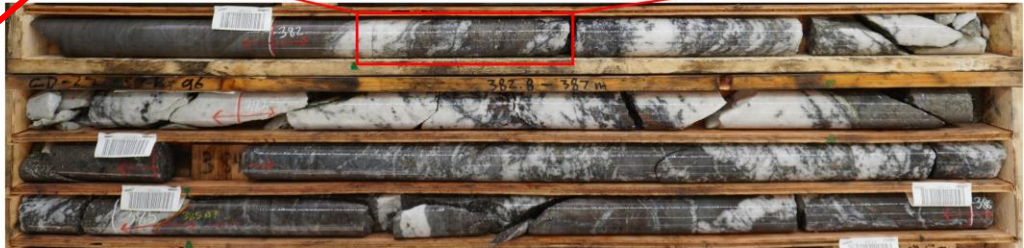
Mineralized Shear Zone





South Cliff Stepout  
Drill Hole: GD-22-58  
Sample ID: ST112089  
Depth: 382.00-383.00 m  
**144.555 gpt AuEq**





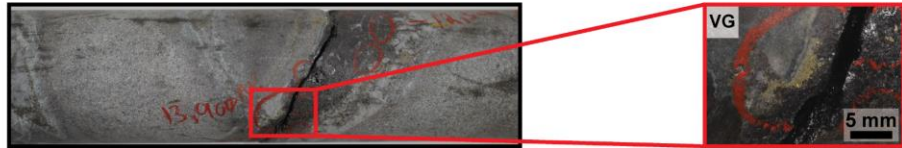
Hole		From (m)	To (m)	Interval (m)	Au (gpt)	Ag (gpt)	Cu (%)	Pb (%)	Zn (%)	AuEq (gpt)
GD-22-58	Interval	378	389	11.00	22.03	127.62	0.02	1.79	1.12	24.80
	Including	379	386	7.00	34.42	197.45	0.03	2.80	1.74	38.70
	Including	379	385.07	6.07	39.60	224.95	0.03	3.20	1.95	44.47
	Including	382	384	2.00	110.10	395.00	0.03	6.19	2.34	118.22

All disclosure of a scientific nature was prepared by or under the supervision of Rein Turna, P. Geo., who is qualified person as defined by NI-43-101.



Pad 16  
 Drill Hole: GD-23-180  
 436.10 m - 444 m  
 513.47 gm AuEq  
 65.00 gpt AuEq over 7.90 m,  
 incl. 86.99 gpt AuEq over 5.90 m,  
 incl. 186.31 gpt AuEq over 2.75 m.

>2 oz/t AuEq OVER 7.90 m ABUNDANT VISIBLE GOLD IN BONANZA SHEAR



Pad ID	Hole ID		From (m)	To (m)	Interval (m)	Au (g/t)	Ag (g/t)	Cu (%)	Pb (%)	Zn (%)	AuEq (g/t)
Pad 16	GD-23-180	Interval	436.10	444.00	7.90	64.88	5.03	0.01	0.03	0.09	65.00
		Including	436.10	442.00	5.90	86.84	6.52	0.01	0.04	0.12	86.99
		Including	437.25	440.00	2.75	186.02	13.29	0.01	0.08	0.24	186.31

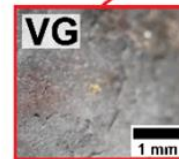
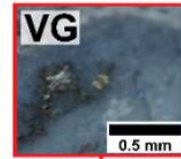
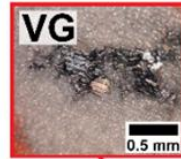
## Select 2023 Drill Results

- GD-23-180 is a 513 gram x meter AuEq hole (16.5 troy ounces gram meter AuEq) collared from Pad 16 within Bonanza Shear, Golden Gate Feeder Zone.
- Highest-grade interval intersected so far on the property with a 513 gram\*meter AuEq result.
- Multiple elongated Visible Gold grains up to 11 mm in length were identified.
- The interval consists of 65.00 g/t AuEq (64.88 g/t Au and 8.03 g/t Ag) over 7.90 meters, including:
  - 86.99 g/t AuEq (86.84 g/t Au and 6.52 g/t Ag) over 5.90 meters; and
  - 86.31 g/t AuEq (186.02 g/t Au and 13.29 g/t Ag) over 2.75 meters



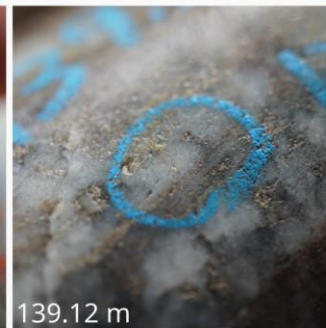
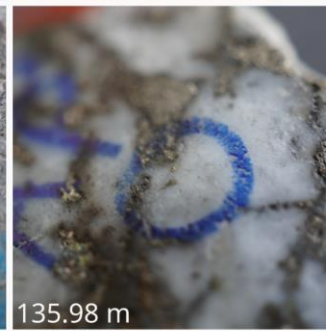
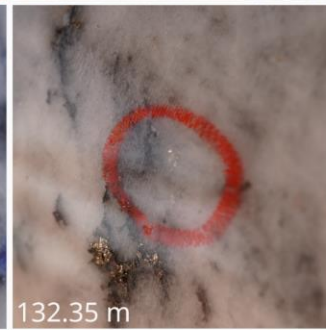
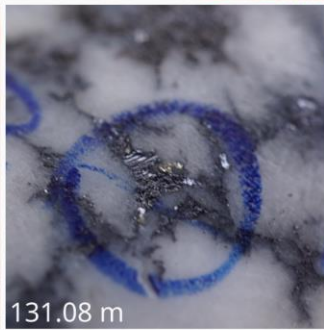
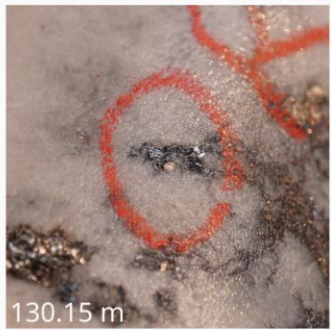
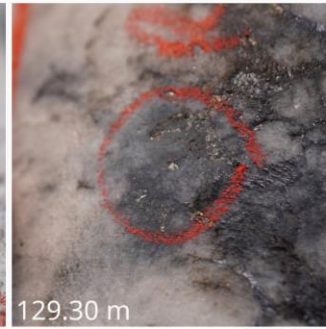
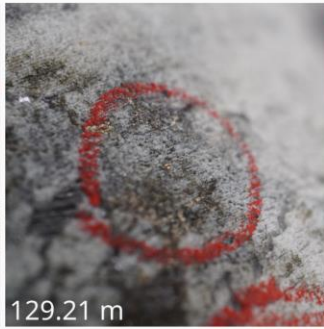
Cliff Pad  
 Drill Hole: GD-23-157  
 Depth: 125.18-138.18 m  
 485 gm AuEq  
 21.081 AuEq over 23 m,  
 incl. 33.753 AuEq over 14 m,  
 incl. 50.266 AuEq over 9 m

## Select 2023 Drill Results



- GD-23-157 is a 485 gram x meter AuEq hole (15.59 troy ounces gram meter AuEq) collared from Cliff Pad within the Golden Gate Feeder Zone.
- Visible Gold intercepted and mineralization containing 23.00 meters\* of 21.08 g/t AuEq (18.95 g/t Au and 95.31 g/t Ag);
  - including 14.00 meters\* of 33.75 g/t AuEq (30.39 g/t Au and 150.42 g/t Ag) and including;
  - 9 meters\* of 50.27 g/t AuEq or 1.62 oz/t AuEq (45.27 g/t Au and 225.42 g/t Ag).
- Interpreted to be the Surebet Zone from 117 to 139.20 meters and is only one of five intervals encountered in this hole.

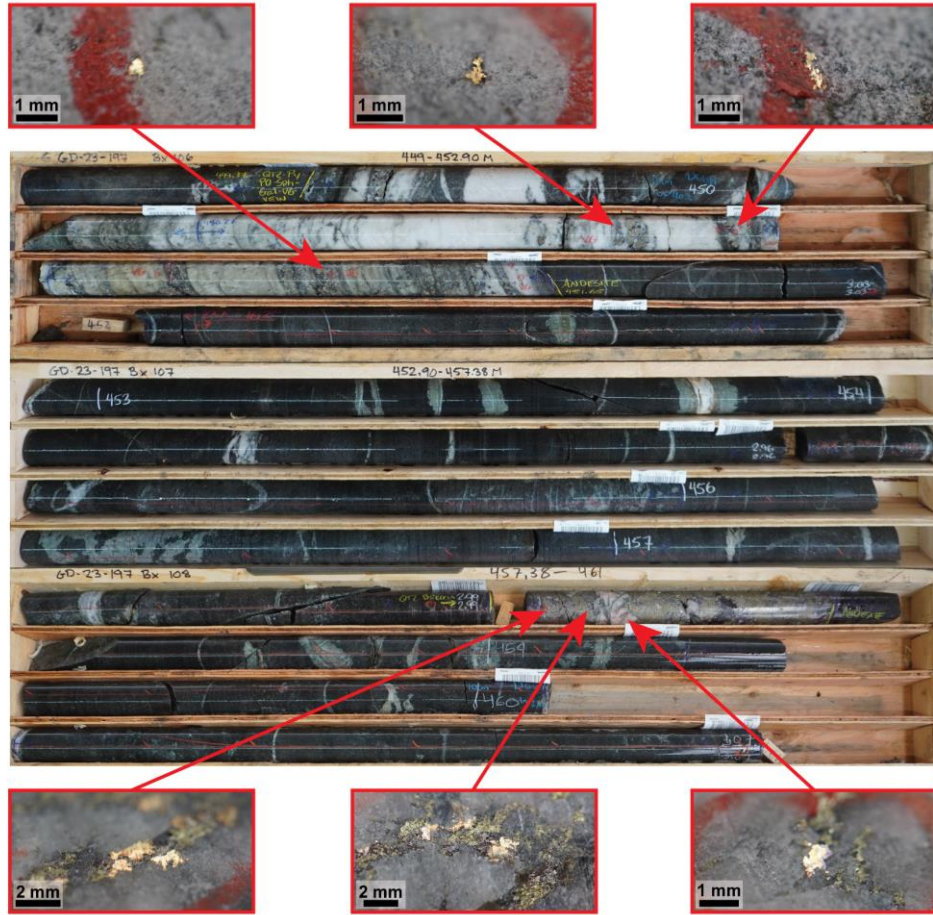
Pad ID	Hole ID		From (m)	To (m)	Interval (m)	Au (g/t)	Ag (g/t)	Cu (%)	Pb (%)	Zn (%)	AuEq (g/t)
Cliff	GD-23-157	Interval	118.00	141.00	23.00	18.95	95.31	0.01	1.29	1.37	21.08
		Including	125.00	139.00	14.00	30.39	150.42	0.02	2.04	2.15	33.75
		Including	129.00	138.00	9.00	45.27	225.42	0.02	3.04	3.15	50.27





Pad 16  
 Drill Hole: GD-23-197  
 439 m - 466 m  
 11.60 gpt AuEq over 27 m,  
 incl. 14.83 gpt AuEq over 21 m,  
 incl. 34.03 gpt AuEq over 9.03 m.

>1 oz/t AuEq OVER 9.03 m ABUNDANT VISIBLE GOLD IN GOLDEN GATE ZONE



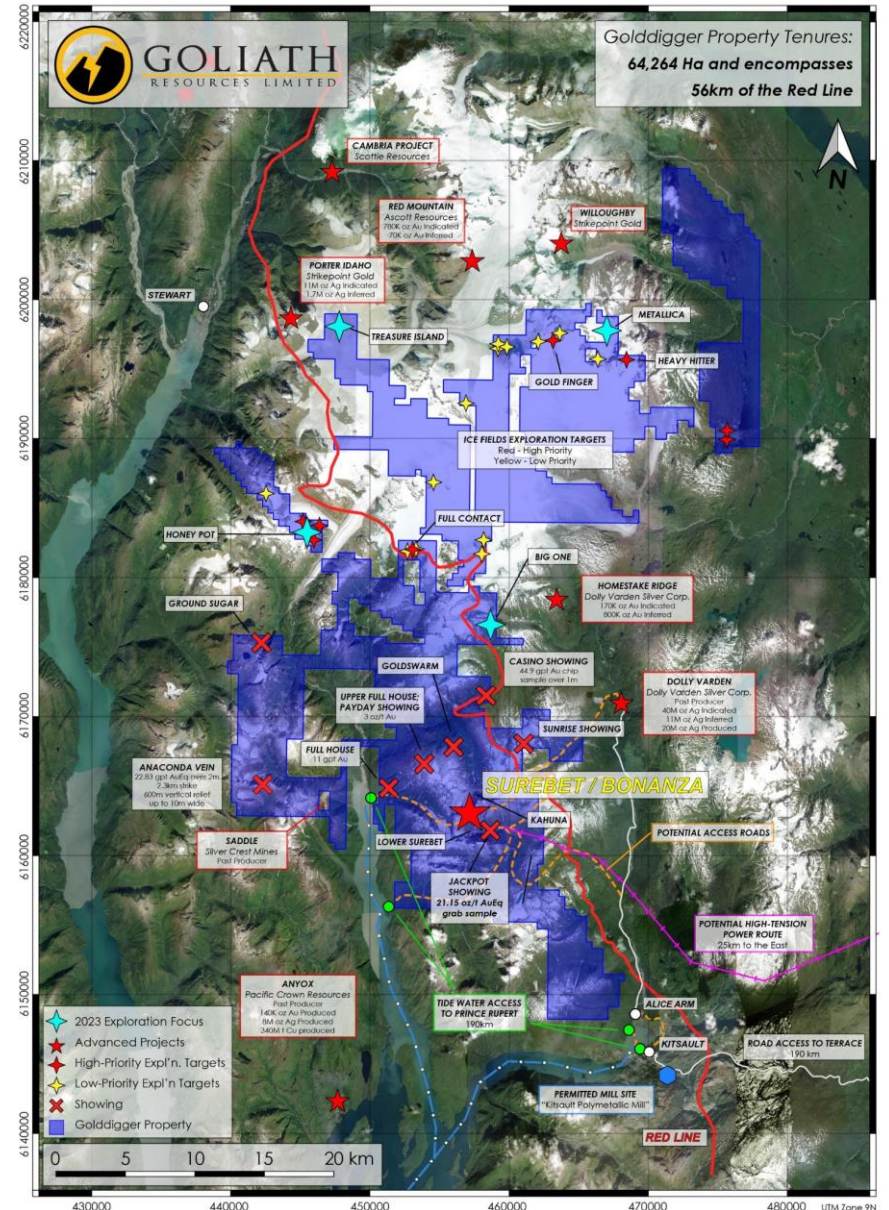
Pad ID	Hole ID		From (m)	To (m)	Interval (m)	Au (g/t)	Ag (g/t)	Cu (%)	Pb (%)	Zn (%)	AuEq (g/t)
Pad 16	GD-23-197	Interval	439.00	466.00	27.00	11.07	23.00	0.03	0.35	0.23	11.59
		Including	442.00	463.00	21.00	14.17	29.13	0.04	0.45	0.28	14.83
		Including	449.37	458.40	9.03	32.55	65.71	0.09	1.02	0.59	34.03

## Selected 2023 Drill Results Newly Discovered Golden Gate Zone

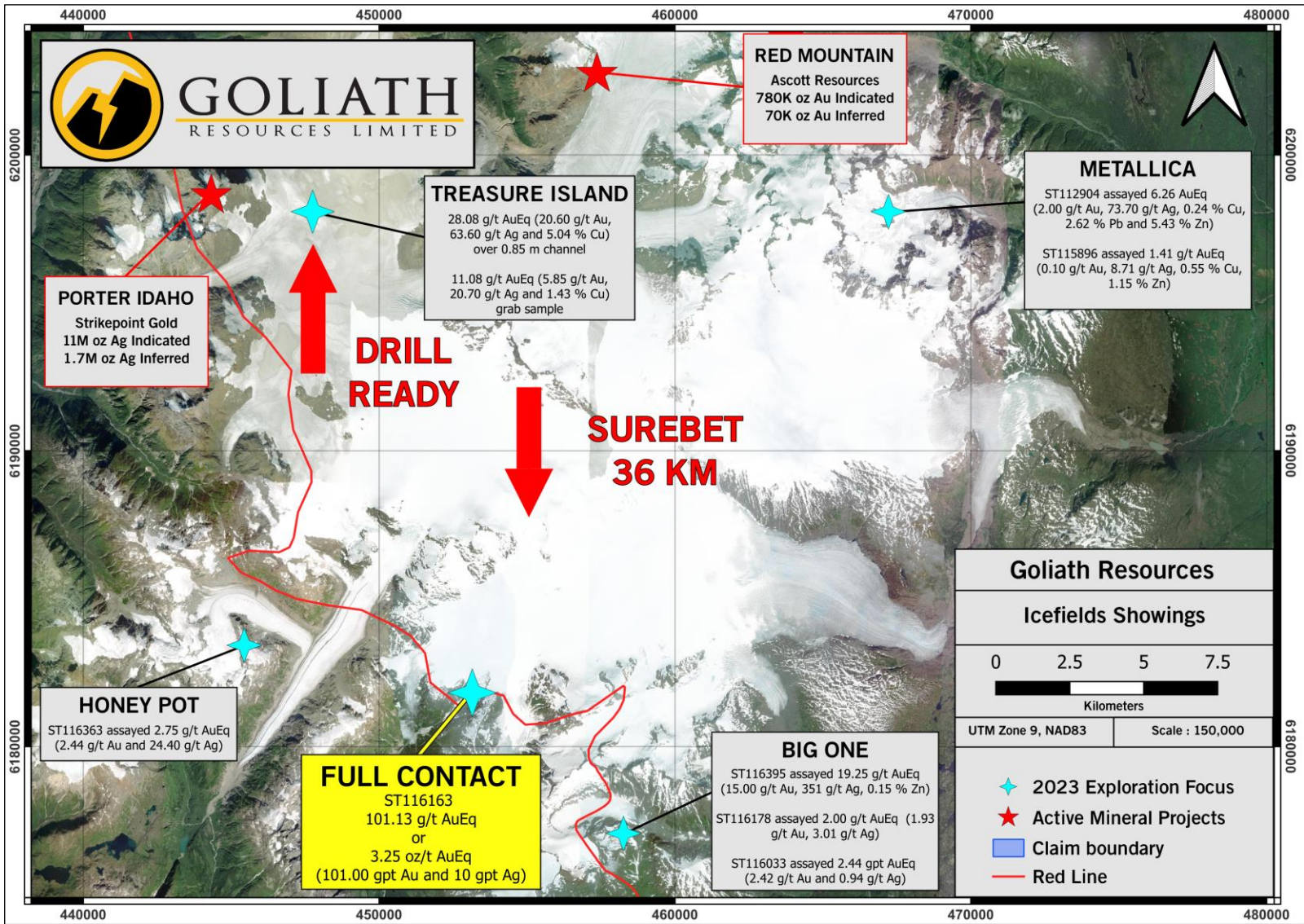
- GD-23-197 collared from Pad 16 intercepted the newly discovered outcropping Golden Gate Zone within the Hazelton Volcanics 20 meters beneath the Bonanza Shear.
- GD-23-197 assayed:
  - 34.03 g/t AuEq or 1.09 oz/t AuEq over 9 meters (~true width) (32.55 g/t Au and 65.71 g/t Ag);
  - within 27 meters of 11.60 g/t AuEq (11.07 g/t Au and 23 g/t Ag).
- Believed to be the fluid pathway proximal to the Surebet Zone and Bonanza Shear as well as the feeder source of all mineralization throughout system.

# Expanded Claim Blocks Control 56 km Of The Red Line

- Based on positive results, the land package was significantly increased from 23,859 hectares to 66,023 hectares covering key terrain of the **Red Line** providing for additional discovery potential.
- The **Red Line** demarks the contact between rocks of the Stuhini Group and the Hazelton Group, believed to be a key marker within ~3 km of which the majority of the world-class multi-million-ounce deposits in the Golden Triangle are located.
- A large portion of the newly acquired land covers icefields to the north that have new outcrop showings at surface recently exposed due to the snowpack and glaciers melting.
- Management believes Surebet Zone/Bonanza Shear discovery is just the tip of the iceberg open for additional new high-grade drill discoveries.



# GOLDDIGGER CAMBRIA ICEFIELDS

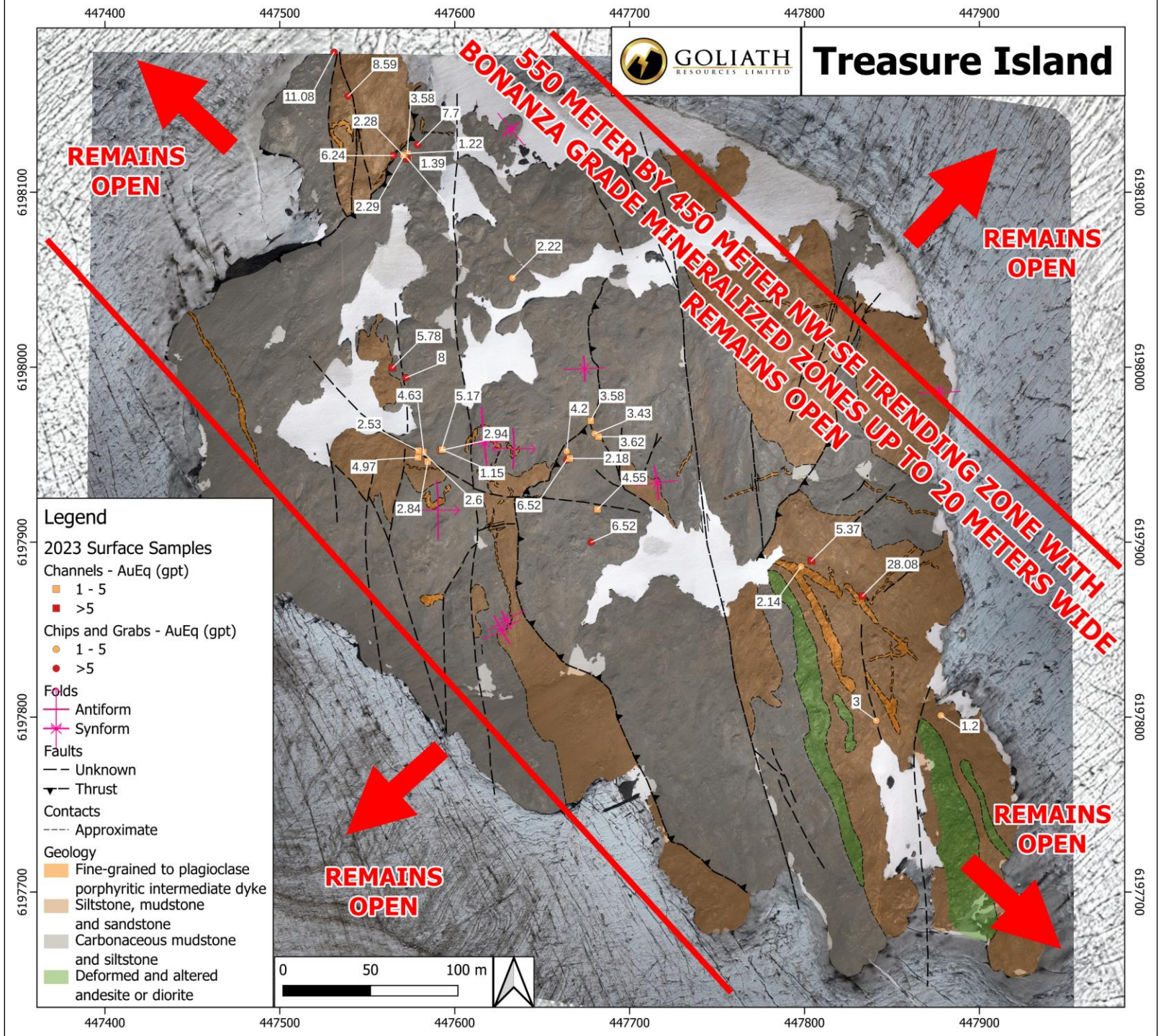


- Channel cutting and mapping completed in preparation for 2024 drilling.
- Treasure Island 36 km north of the Surebet discovery, 6 km east of, and on trend with, the Porter Idaho mine:
  - Maiden drill program planned in 2024
  - Channel samples collected assayed up to 28.08 gpt AuEq and 14.45% Cu.
  - 15 out of 16 channel cuts (94%) assayed >1.00 gpt.
  - 13 out of 19 grab and chip samples (68%) assayed >1.00 gpt AuEq.
- Full Contact
  - Maiden drill program planned in 2024
  - Grab assays up to 101.13 gpt AuEq (101.00 gpt Au and 10 gpt Ag)
- Other outcrop showings include Big One, Honey Pot and Metallica; maiden drill program 2025?.





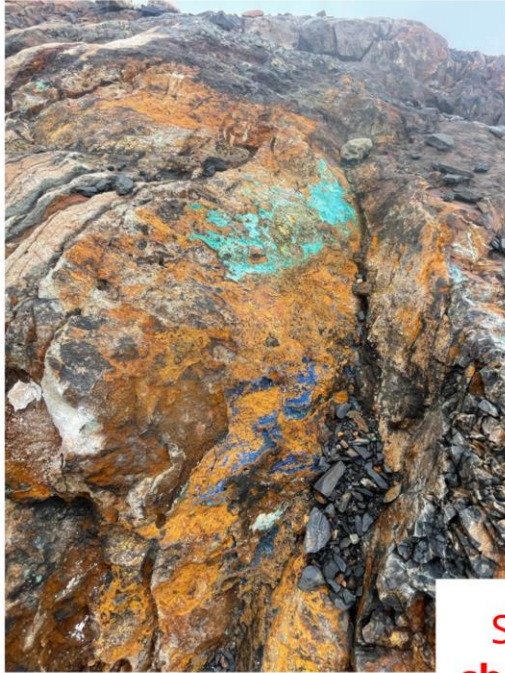
# Treasure Island





**GOLIATH**  
RESOURCES LIMITED

Golddigger property - **NEW TREASURE ISLAND DISCOVERY**  
500 METERS X 450 METERS - DRILL READY - REMAINS OPEN



Shears and veins with **massive chalcopyrite and pyrite** hosted in mudstone, siltstone and tuff units



**Channel cut NN1**

**28.08 gpt AuEq**

(20.6 gpt Au, 63.6 gpt Ag, 5.04 % Cu)

Massive to stockwork chalcopyrite hosted in mudstones



**ST115881**

**11.08 AuEq (gpt)**

(0.04 gpt Au, 126.00 gpt Ag, 7.15% Cu)



**Channel cut Treasure\_RP\_2**

**3.54 gpt AuEq over 2.48 m**

(0.13 gpt Au, 23.96 gpt Ag, 2.34 % Cu)

Massive chalcopyrite + pyrite in sheared quartz vein



**ST116045**  
**8.00 AuEq (gpt)**  
(5.85 gpt Au, 20.70 gpt Ag, 1.43% Cu)

Channel ID		Length (m)	Au (gpt)	Ag (gpt)	Cu (%)	Pb (%)	Zn (%)	AuEq (gpt)
Treasure_RP_2	Interval	2.48	0.13	23.96	2.34	0	0.01	3.54
	Including	1.44	0.13	37.76	3.97	0	0.01	5.87
	Including	0.33	0.2	126	14.45	0	0.02	20.98
NN1	Interval	0.85	20.6	63.6	5.04	0	0.01	28.08

# Golddigger property - **NEW FULL CONTACT DISCOVERY** 1.4 KM GOSSAN - DRILL READY - REMAINS OPEN

**Pyrite, sphalerite and arsenopyrite** within 70-meter-wide zone of mineralized quartz veins and breccia



1.4 km trend on the Red Line with samples that assayed up to **101.13 g/t AuEq or 3.25 oz/t** (101.00 g/t Au and 10 g/t Ag)



ST115867 **2.82 g/t AuEq**

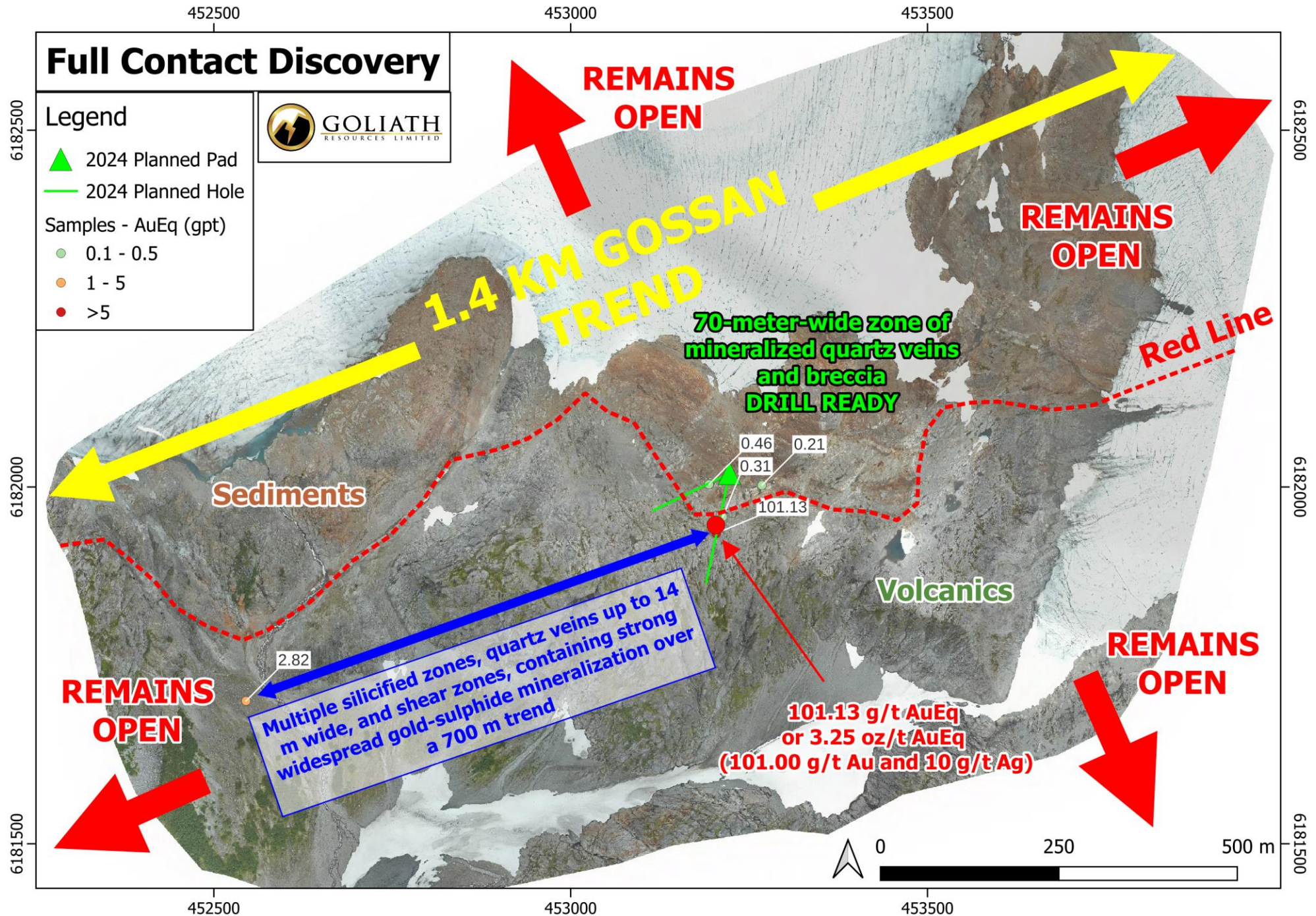


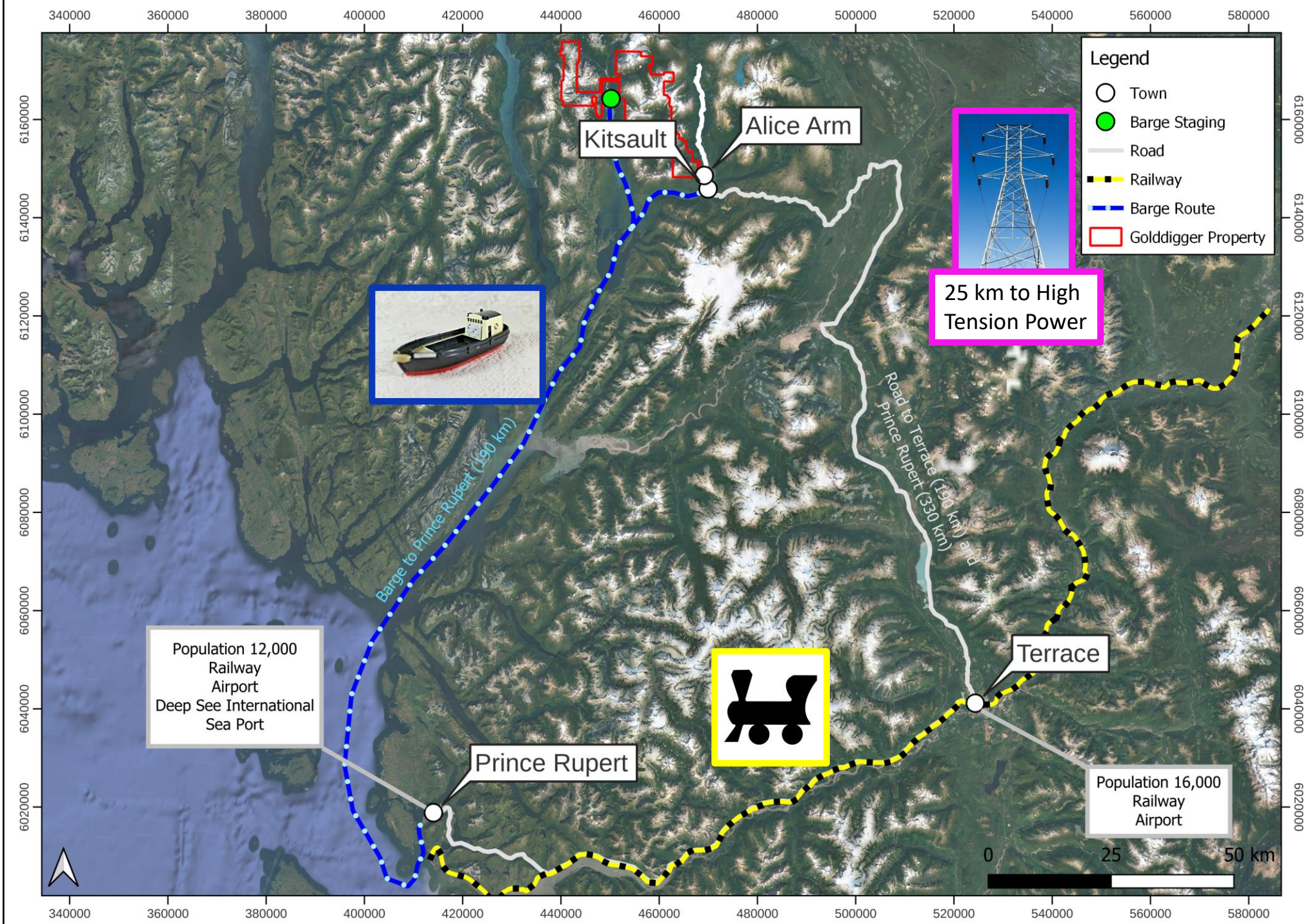
ST116049 **0.46 gpt AuEq**

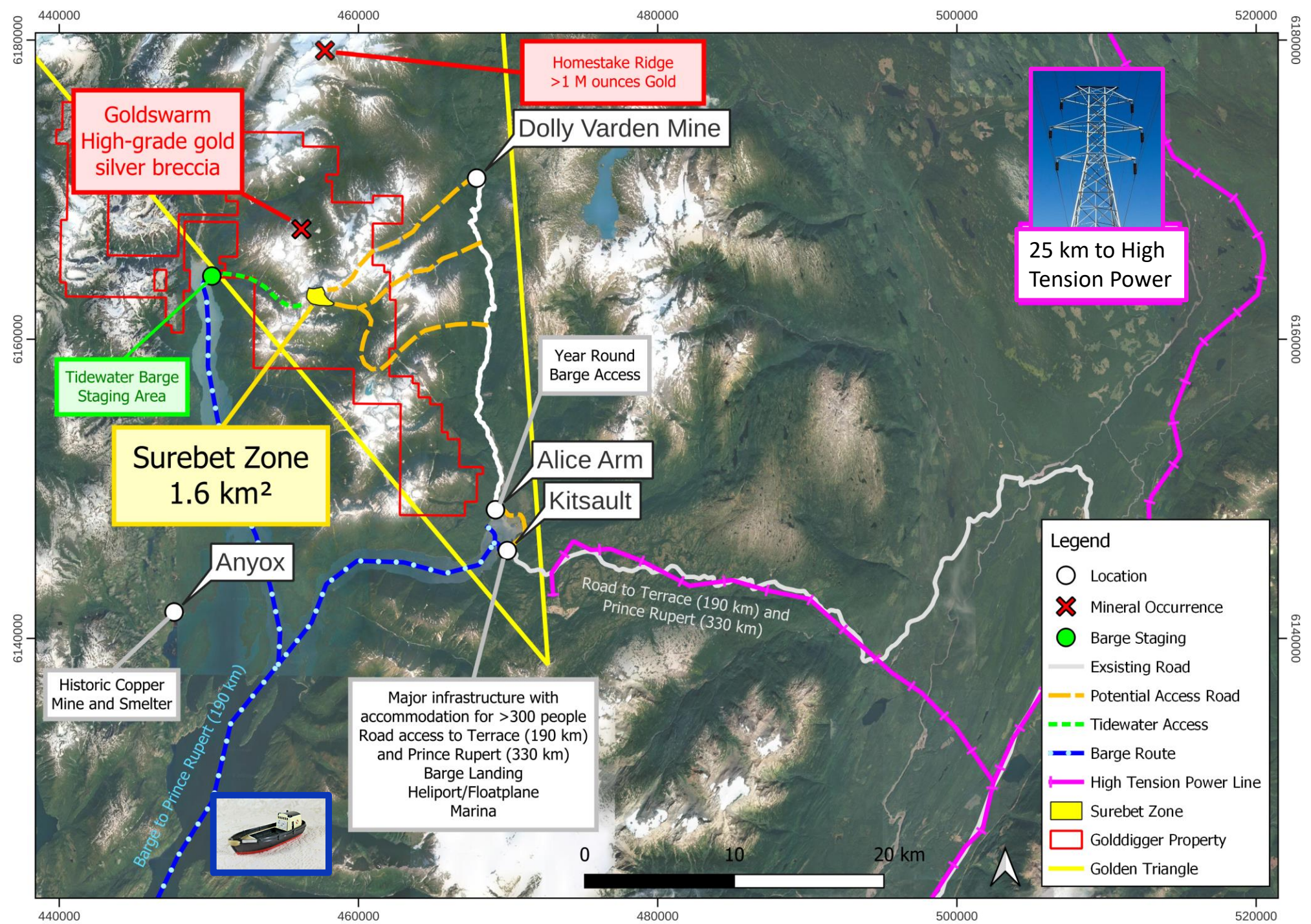
# Full Contact Discovery

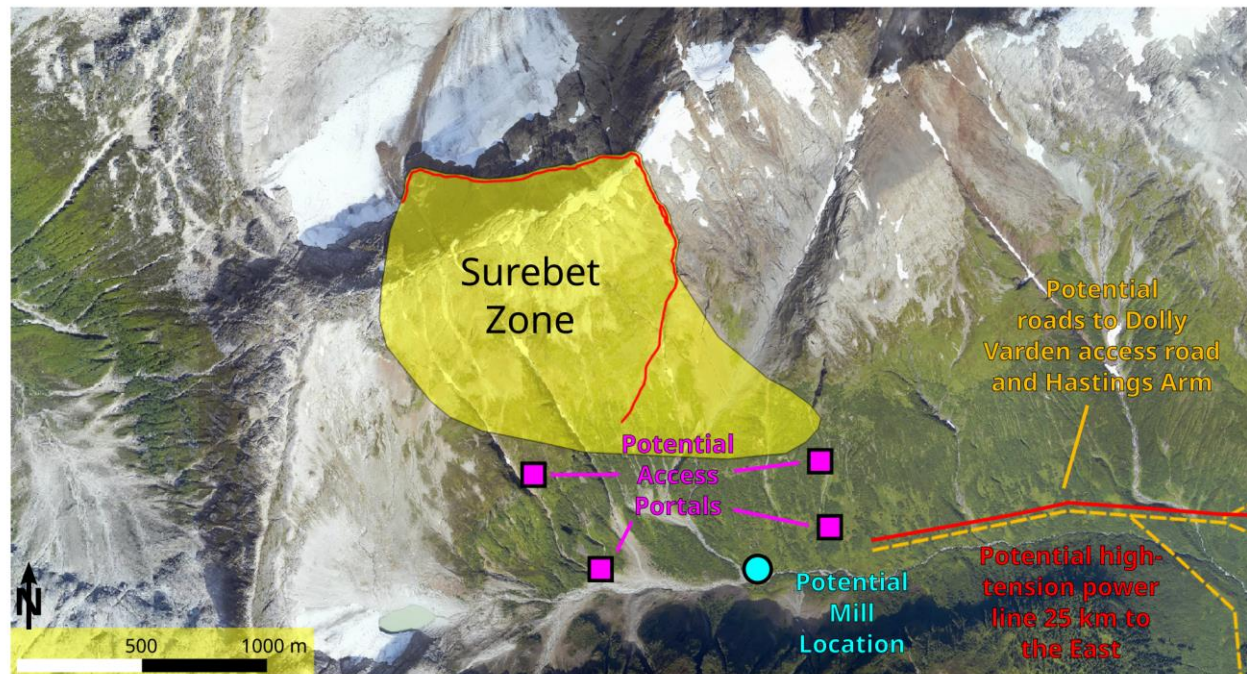
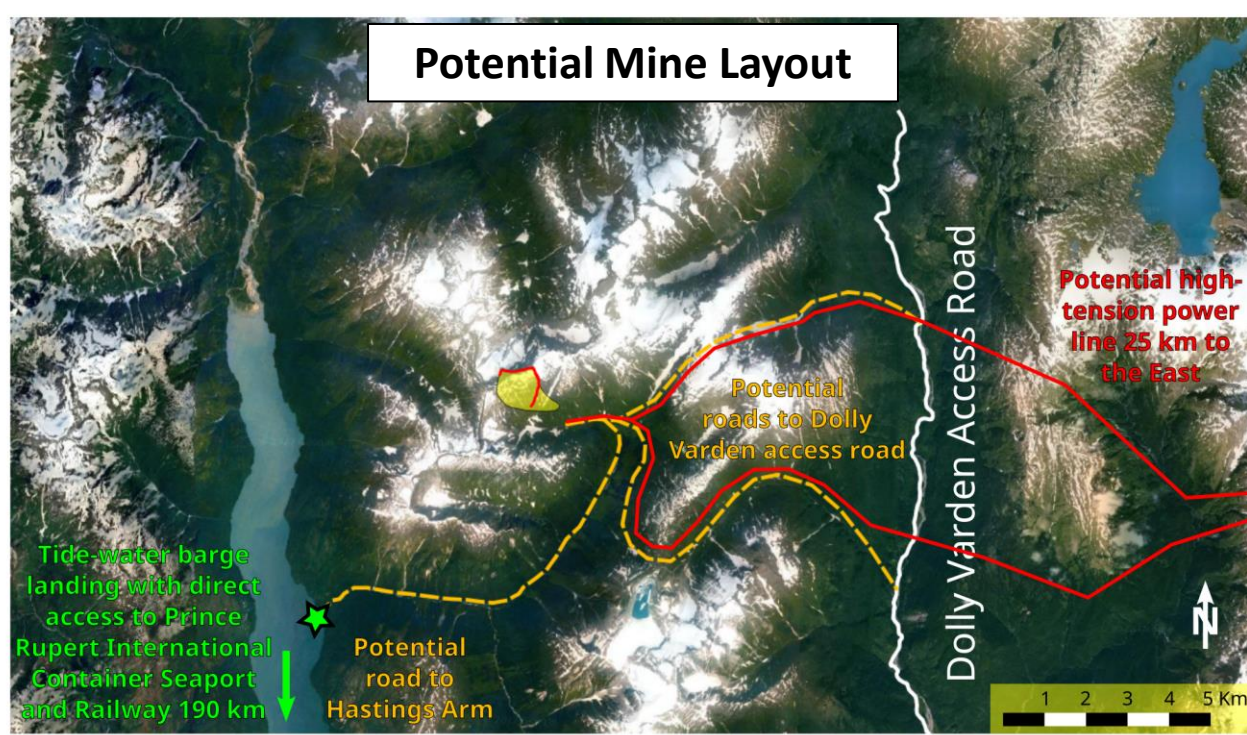
## Legend

- ▲ 2024 Planned Pad
- 2024 Planned Hole
- Samples - AuEq (gpt)
  - 0.1 - 0.5
  - 1 - 5
  - >5







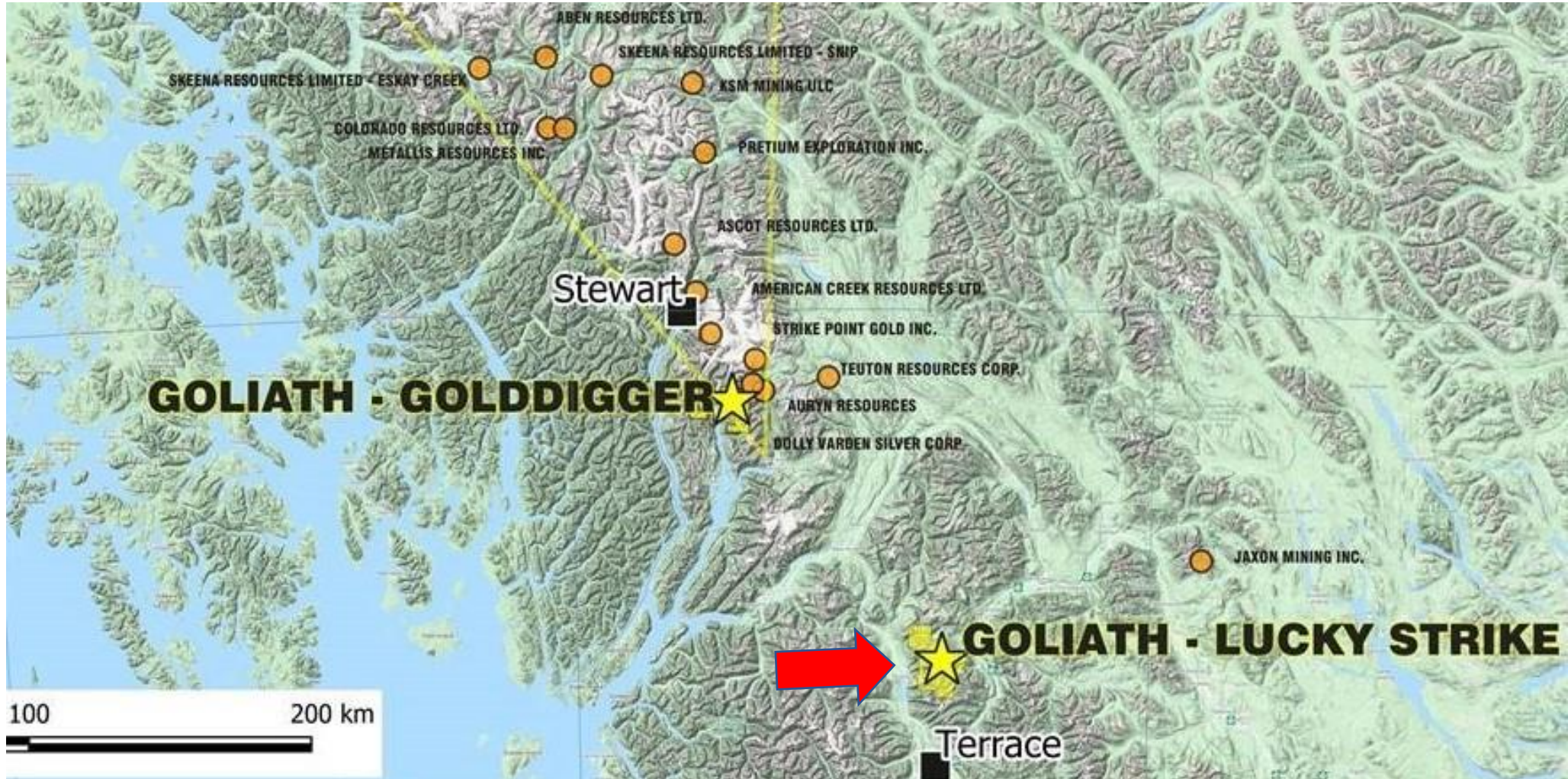






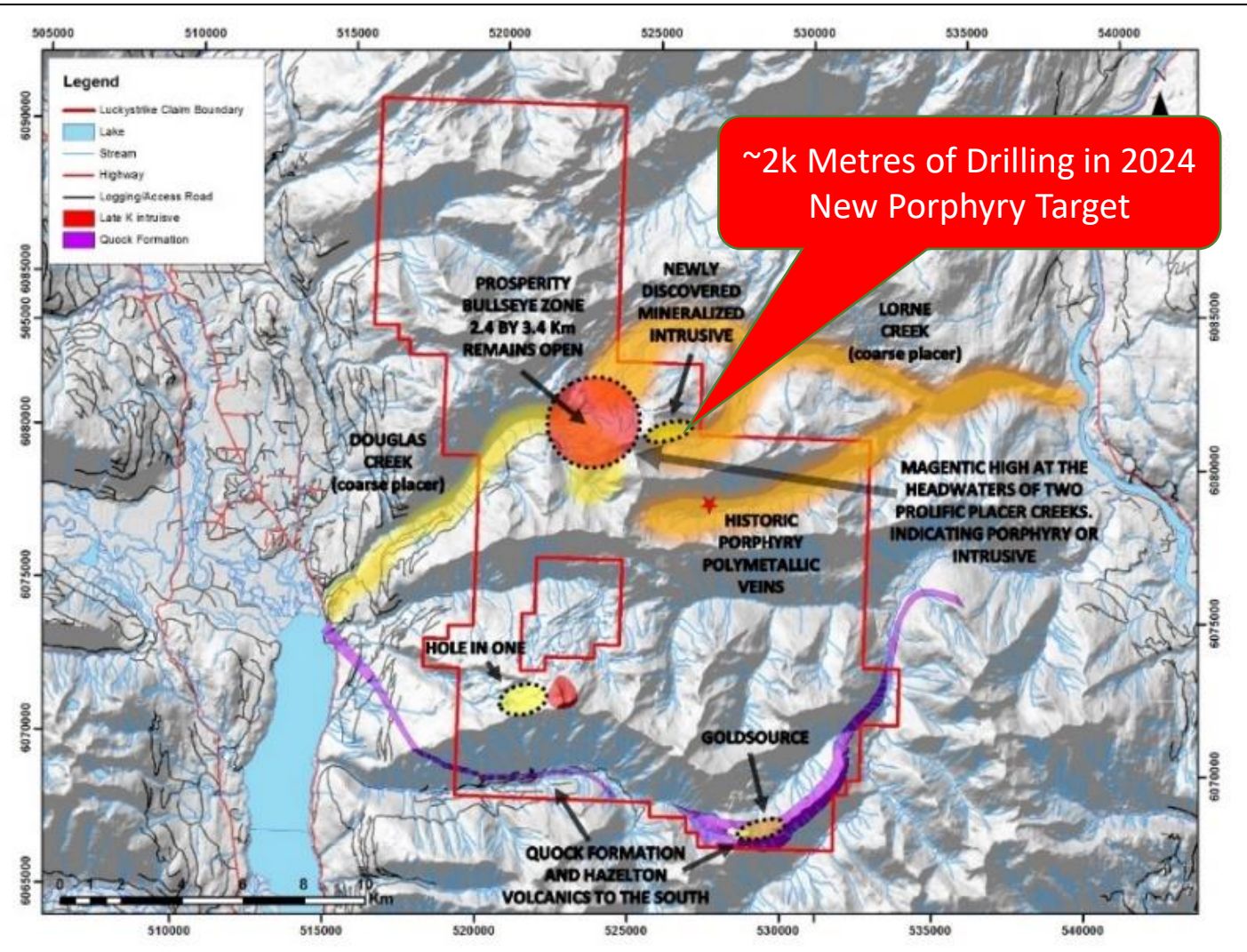
# LUCKY STRIKE PROPERTY

Option to earn 100%





# LUCKY STRIKE PROPERTY



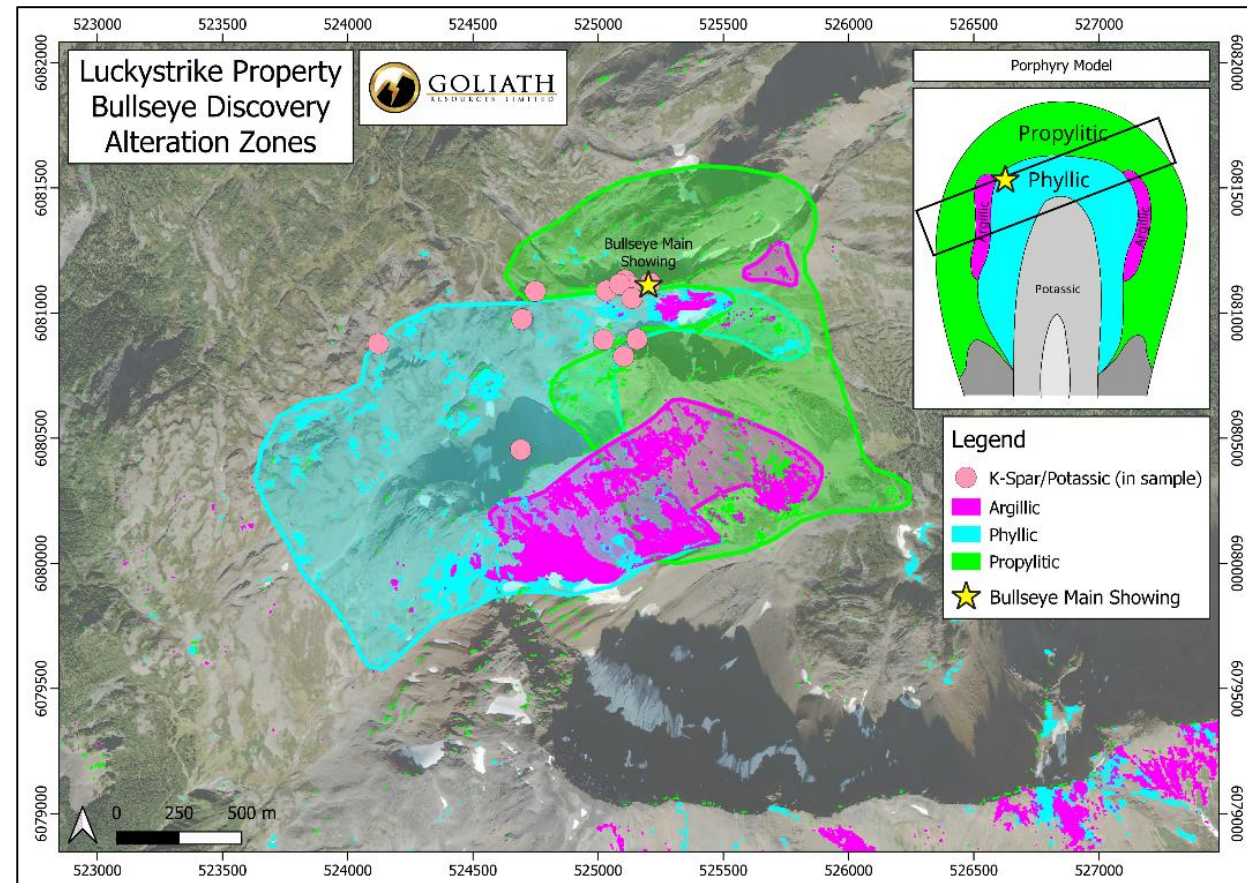
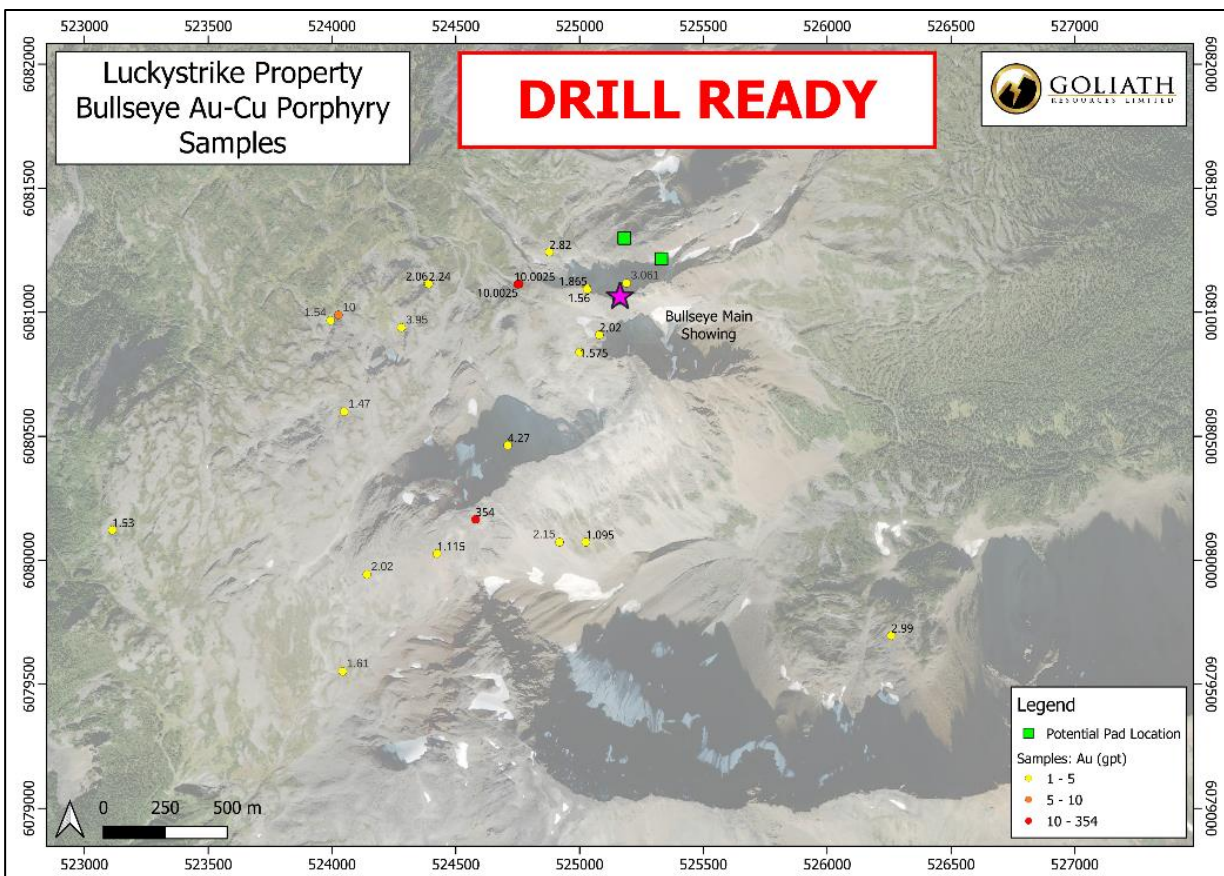
~2k Metres of Drilling in 2024  
New Porphyry Target

- **Lucky Strike is 31,486 ha; has logging road access, a few km's to a major highway, power, rail and ~40 kilometres north by paved highway of infrastructure in Terrace, BC.**
- **Bullseye Gold-Copper Porphyry**
  - ~2,000 metres of diamond drilling planned in 2024 at new untested porphyry drill target.
  - Target grabs assayed up to 3.06 g/t Au, 1.8 g/t Ag and 1% Cu.
  - Drill target area defined by a large 1,200 x 700 metre alteration system at surface.
  - Coarse nuggets over 6 ounces gold drain the porphyry; most prolific placer creeks in district.



# LUCKY STRIKE PROPERTY – Bullseye Porphyry

The Bullseye porphyry is untested diamond drill target consisting of coarse-grained intrusive units with mineralization, textures and potassic alteration (including K-Feldspar). Multiple Au-Cu mineralized grab samples were collected from the Bullseye porphyry drill target and assayed up to 3.06 g/t Au, 1.8 g/t Ag and 1% Cu.



The alteration pattern observed at the Bullseye drill target coincides with the top part of a porphyry system with strong concentric propylitic alteration surrounding a core of potassic and phyllic alteration bordered by domains of argillic alteration.



# CONTACT INFORMATION

**TSX-V: GOT OTCQB: GOTRF FSE: B4IF**

For additional information  
please contact:

**Roger Rosmus**

Founder and CEO

+1.416.488.2887

[roger@goliathresources.com](mailto:roger@goliathresources.com)

**Goliath Resources Limited**

82 Richmond Street East

Toronto, ON, Canada

M5C 1P1

Rein Turna, P. Geo., is the qualified person as defined by National Instrument 43-101, for Goliath Resources projects, and supervised the preparation of, and has reviewed and approved, the technical information in this release. Further information regarding Goliath Resources properties can be sourced on-line at [www.goliathresourcesltd.com](http://www.goliathresourcesltd.com).