

Goliath Intersects Several High-Grade Holes Including 19.13 g/t Au Over 6.10 Meters, Drilling Significantly Expands Extent Of Gold Mineralization In All 5 Main Zones That Remain Open At Surebet, 110 Holes From 2025 Are Pending Assays For Gold Equivalent Results

- This news release includes the final 70 holes completed during the 2025 drilling campaign that were assayed for Gold Only. Assays are still pending for 110 drill holes from 2025 for multi-element gold equivalent (AuEq) results. These results will be released in the near future once all assays have been received, compiled and interpreted.
- 100% of the drill holes completed to date, have all intersected gold mineralization clearly demonstrating the remarkable continuity, grades, and widths in 5 Main Gold-Rich Zones comprising 46 mineralized lodes that remain open for expansion.
- Of the holes drilled during the 2025 campaign, 83 out of 110 holes (or 76%) contained visible gold to the naked eye (VG-NE).
- The fully funded 2026 drill program will be mainly focused on expanding the 5 Main Mineralized Zones. Data compilation and interpretation is underway which will be used to vector in on the indicated Motherlode causative intrusive source to this extensive high grade gold system with widespread VG-NE.

DRILL HIGHLIGHTS:

All intercepts below are approximately true width, and these assays reflect gold only (The gold equivalent (AuEq) values in all 110 drill hole intervals will be adjusted accordingly and announced, once the Silver, Copper, Lead and Zinc values are received, compiled and interpreted):

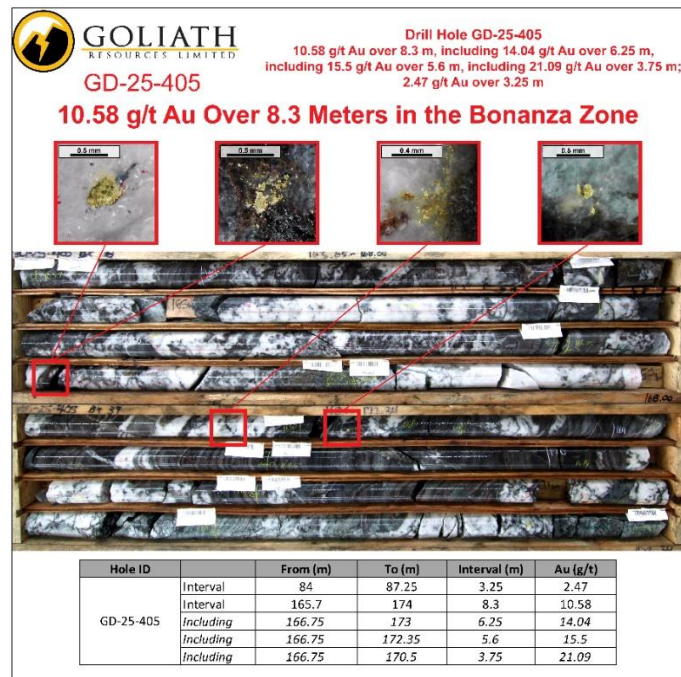
GD-25-319

- Drill hole GD-25-319 intersected 19.13 g/t Au over 6.10 meters, including 22.86 g/t Au over 5.10 meters, including 29.09 g/t Au over 4.00 meters in quartz-sulphide veins, part of the Golden Gate Zone, containing multiple occurrences of gold visible to the naked eye (VG-NE); see image below.



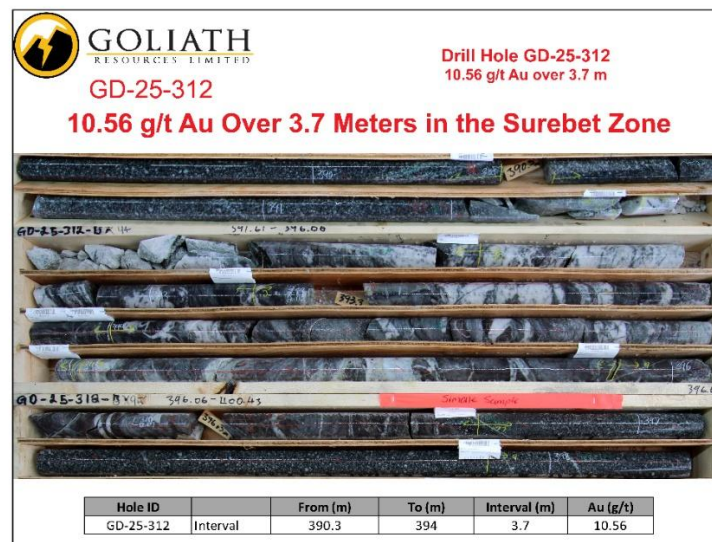
GD-25-405

- Drill hole GD-25-405 intersected 10.58 g/t Au over 8.30 meters, including 14.04 g/t Au over 6.25 meters including 15.50 g/t Au over 5.60 meters from a quartz-sulphide breccia, part of the Bonanza Zone, containing multiple occurrences of VG-NE; see image below.
- Additional intervals include 3.25 meters of 2.47 g/t Au in quartz-sulphide veins part of the Surebet Zone.



GD-25-312

- Drill hole GD-25-312 intersected 10.56 g/t Au over 3.70 meters from a gold-rich quartz-sulphide breccia interval, part of the Surebet Zone; see image below.



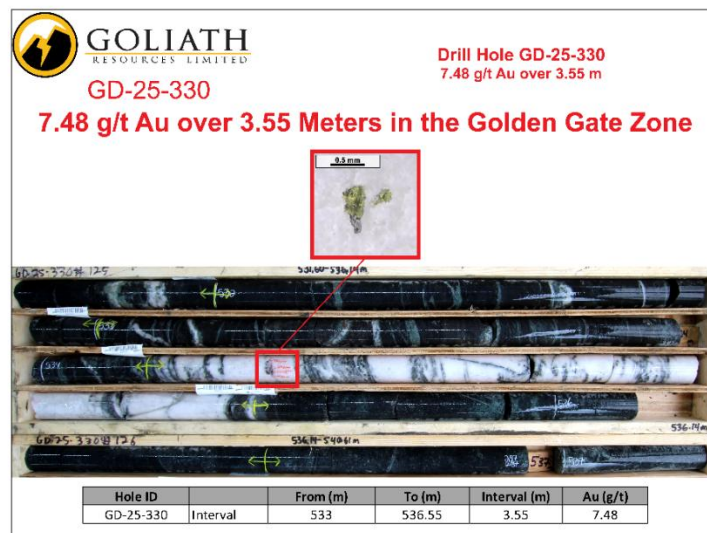
GD-25-345

- Drill hole GD-25-345 intersected 4.47 g/t Au over 6.00 meters including 6.68 g/t Au over 4.00 meters, including 7.93 g/t Au over 3.36 meters from a series of quartz-sulphide veins, part of the Golden Gate Zone, containing multiple occurrences of VG-NE as well as semi-massive to massive sphalerite and pyrrhotite; see image below.
- Additional separate intervals include 3.92 g/t Au over 3.79 meters part of the Whopper Zone and 3.83 g/t Au over 3.78 meters.



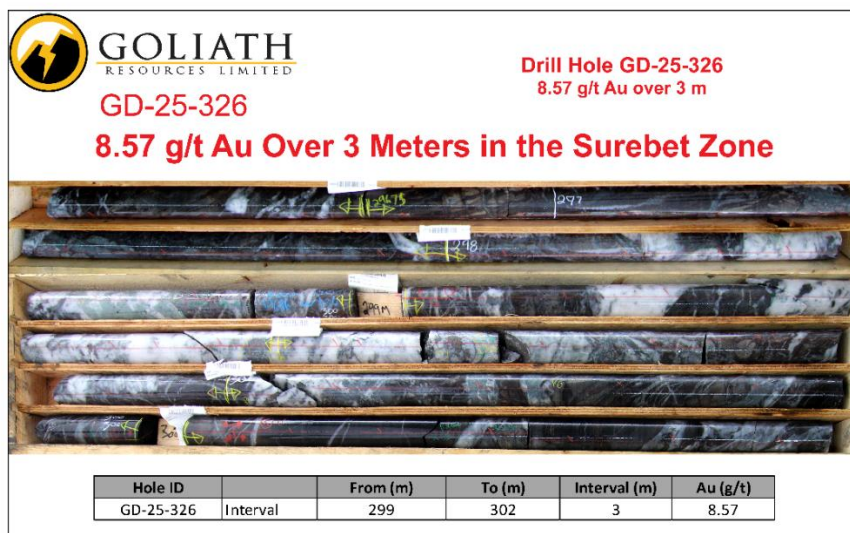
GD-25-330

- Drill hole GD-25-330 intersected 7.48 g/t Au over 3.55 meters from an interval with quartz-sulphide veins, part of the Golden Gate Zone, containing VG-NE; see image below.



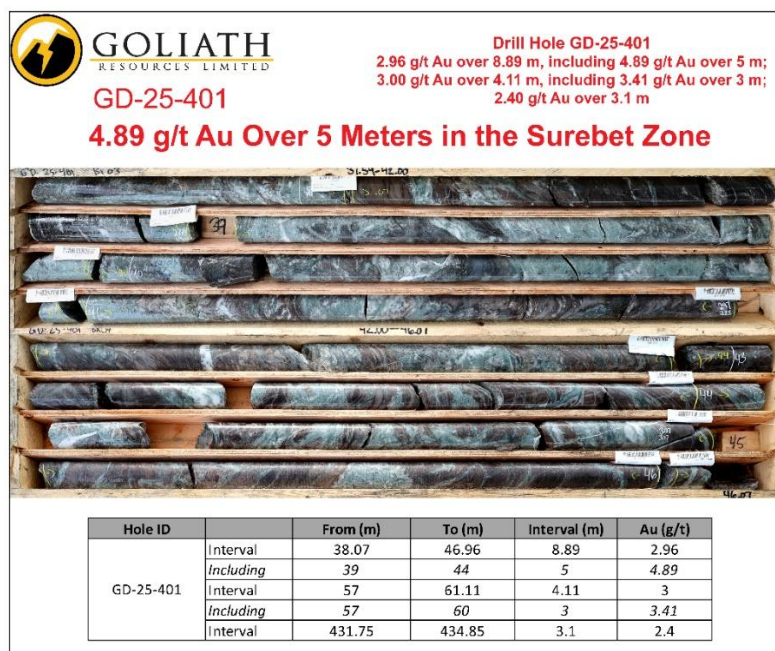
GD-25-326

- Drill hole GD-25-326 intersected 8.57 g/t Au over 3.00 meters from a quartz-sulphide vein and breccia interval part of the Surebet Zone; see image below.



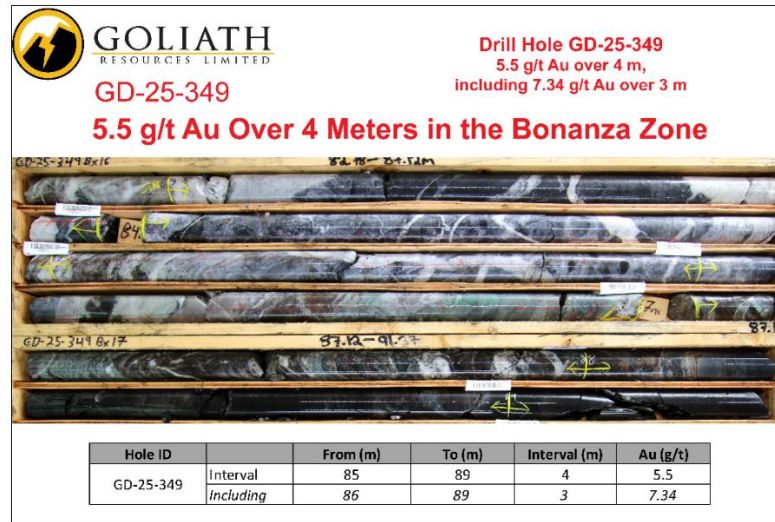
GD-25-401

- Drill hole GD-25-401 intersected 4.89 g/t Au over 5.00 meters, within 2.96 g/t Au over 8.89 meters, part of the Surebet Zone, from a brecciated and strongly calc-silicate altered section; see image below.
- Additional intervals include 3.0 g/t Au over 4.11 meters part of the Surebet Zone, as well as 2.4 g/t Au over 3.1 meters, part of the Golden Gate Zone.



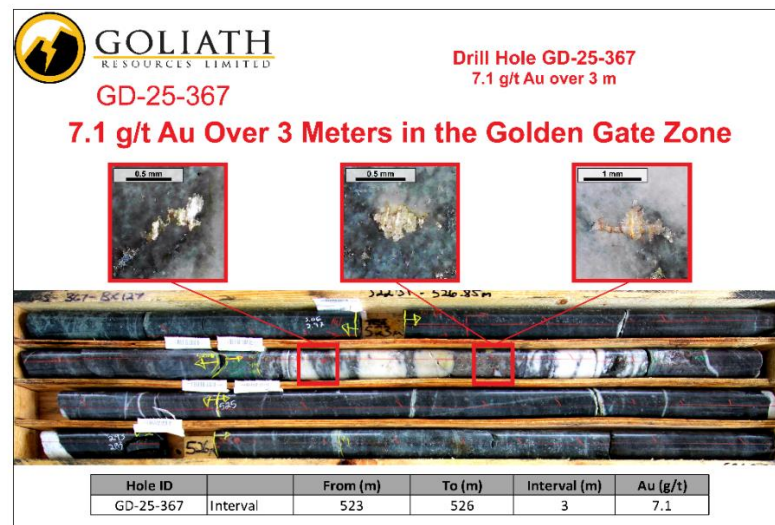
GD-25-349

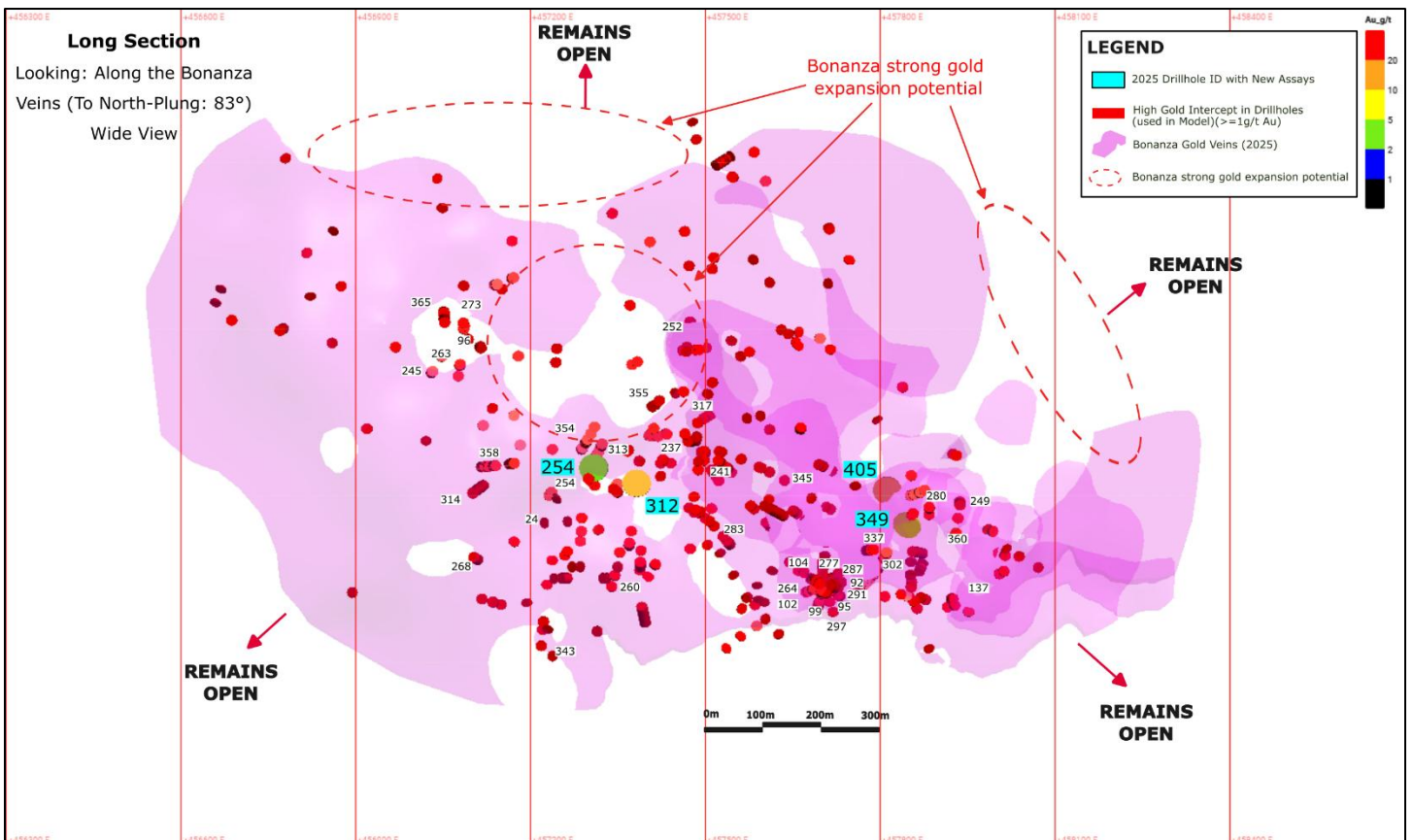
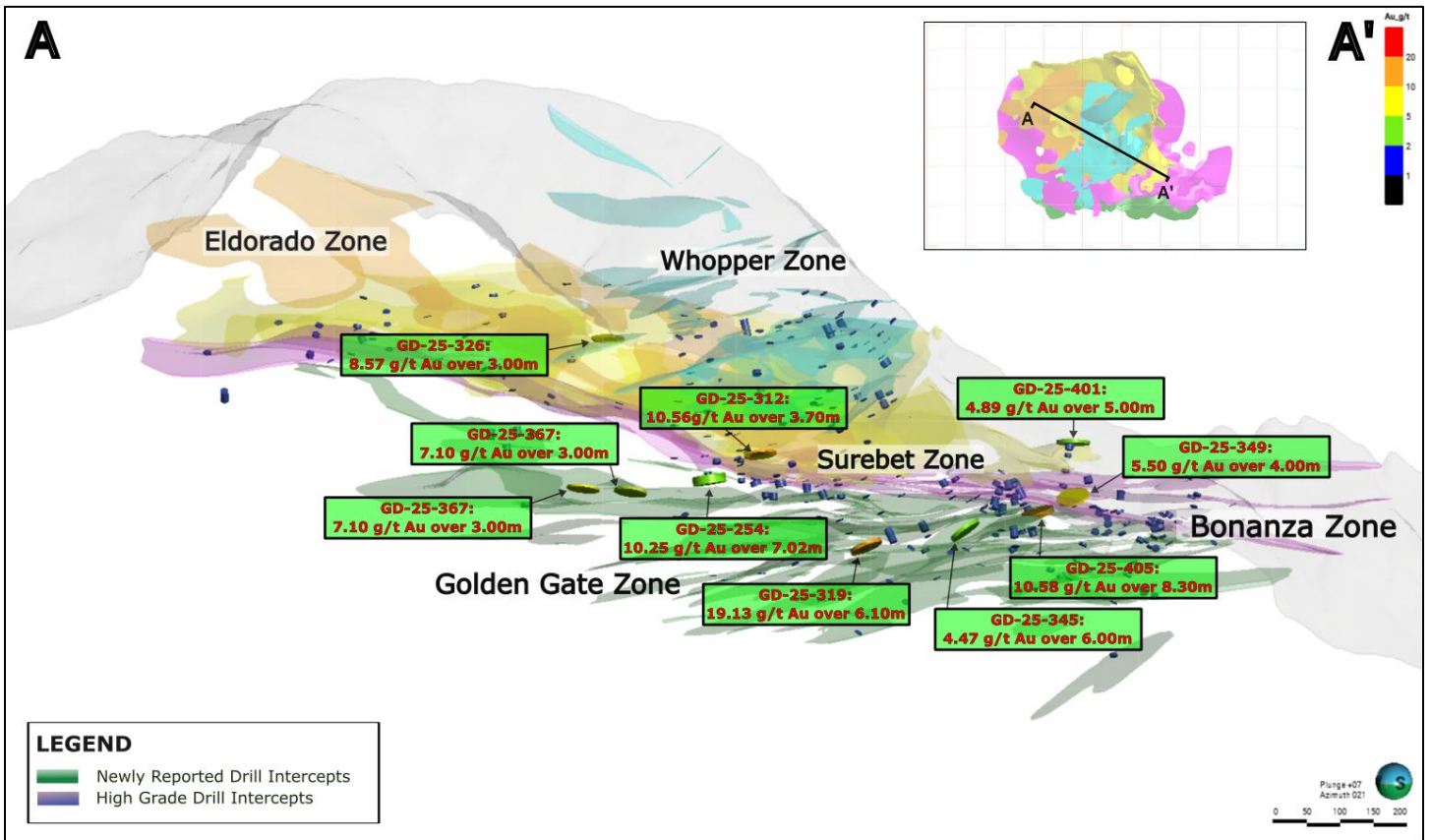
- Drill hole GD-25-349 intersected 5.50 g/t Au over 4.00 meters, including 7.34 g/t Au over 3.00 meters from a series of quartz-sulphide veins, part of the Bonanza Zone; see image below.



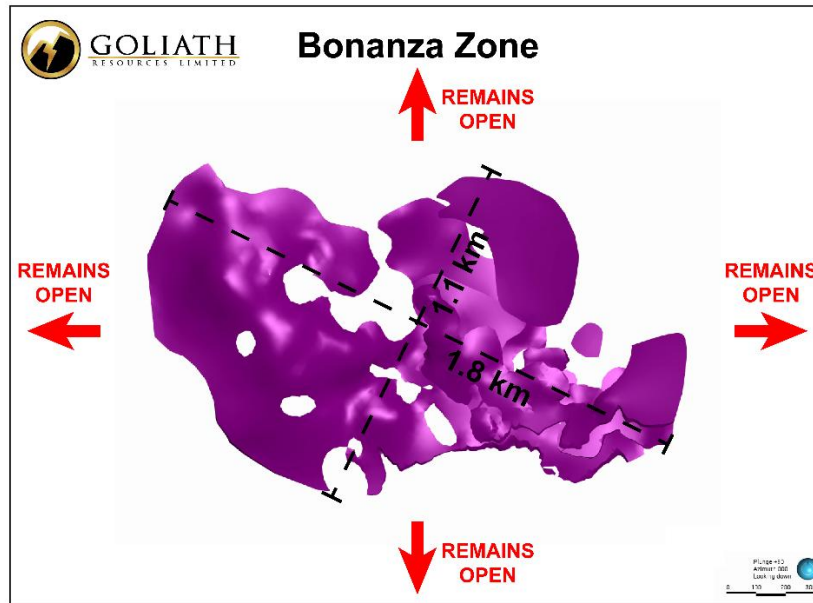
GD-25-367

- Drill hole GD-25-367 intersected 7.10 g/t Au over 3.00 meters from an interval of quartz-sulphide veining, part of the Golden Gate Zone, containing multiple occurrences of VG-NE; see image below.

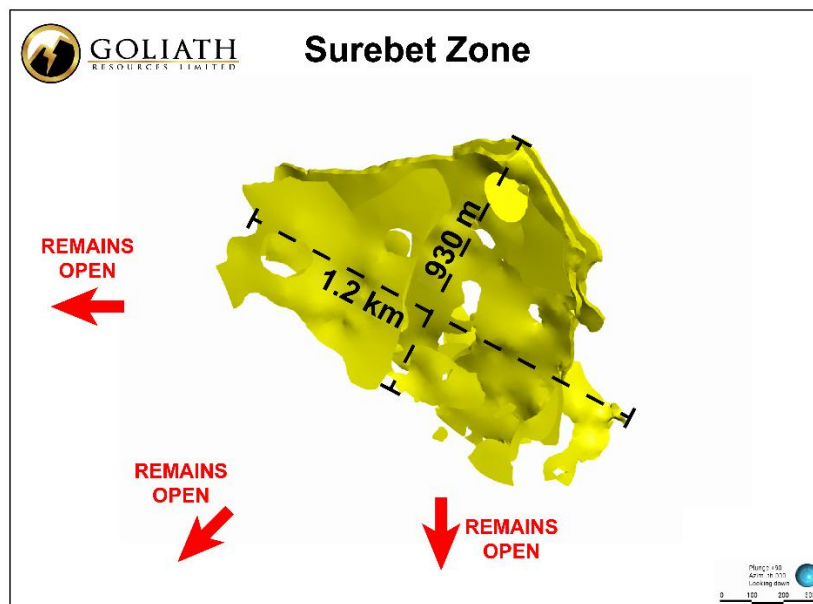




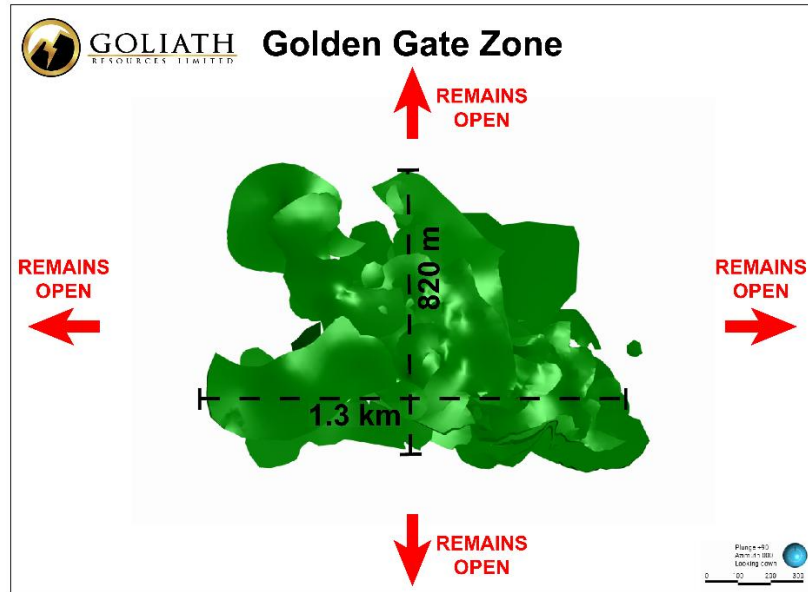
- Assay results from the recently completed 64,364 meters of drilling have significantly expanded the extent of the high-grade gold mineralization at the Surebet Discovery that remains open for expansion laterally and at depth. The updated model for the Surebet system, which includes all the 2025 gold assay results, consists of 5 extensive mineralized zones comprising 46 gold-rich lodes as well as gold-rich Eocene-aged RIRG dykes:
 - The Bonanza Zone has a strike of 1.8 km NW-SE and 1.1 km NE-SW containing 5 lodes up to 19 meters thick with a combined thickness of up to 27 meters and intercepts up to 13.53 g/t AuEq (12.10 g/t Au and 54.13 g/t Ag) over 11.00 meters (drill hole GD-22-100) and remains open for expansion.



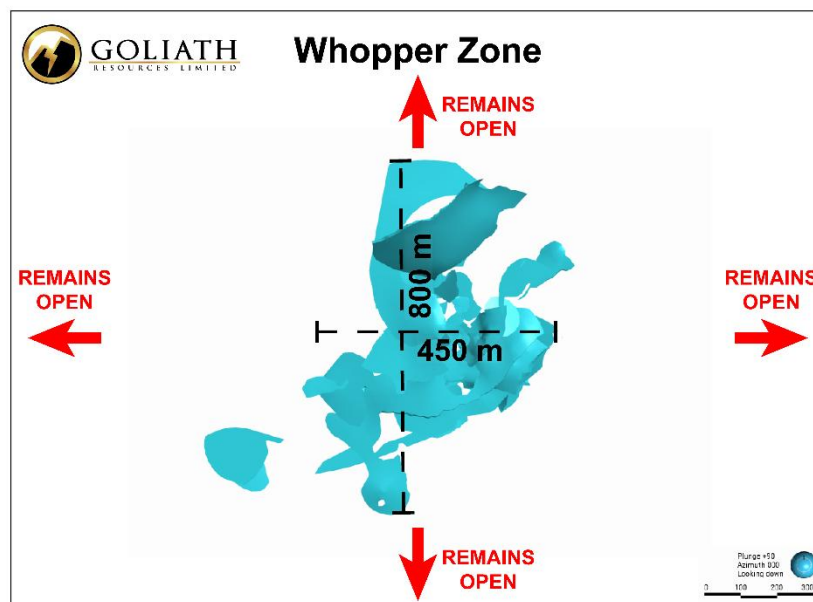
- The Surebet Zone has a strike of 1.2 km NW-SE and 930 meters NE-SW containing 9 lodes up to 19 meters thick with a combined thickness of up to 30 meters and intercepts up to 21.08 g/t AuEq (18.95 g/t Au and 95.31 g/t Ag) over 23.00 m (drill hole GD-23-157) and remains open for expansion to the SW.



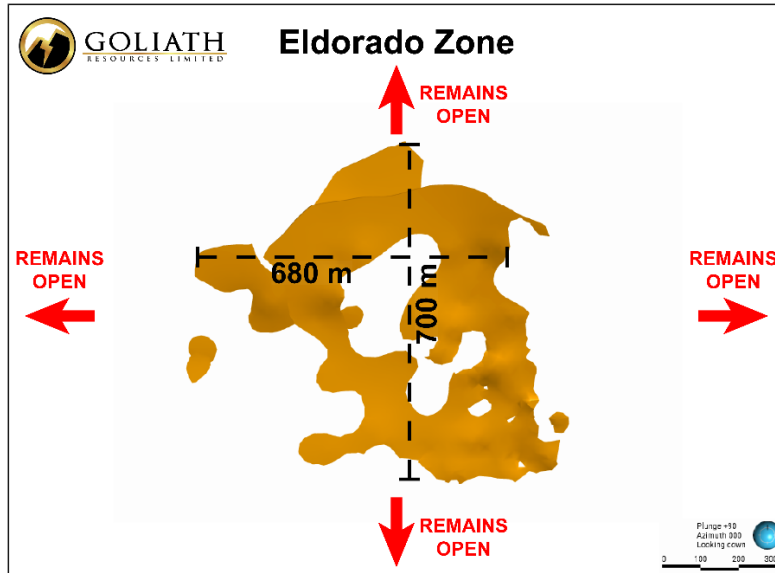
- The Golden Gate Zone has a strike of 1.3 km E-W and 820 meters N-S containing 18 lodes up to 14 meters with a combined thickness of up to 49 meters and with intercepts up to 34.52 g/t AuEq (34.47 g/t Au and 3.96 g/t Ag) over 39.00 m (drill hole GD-24-260) and remains open for expansion.



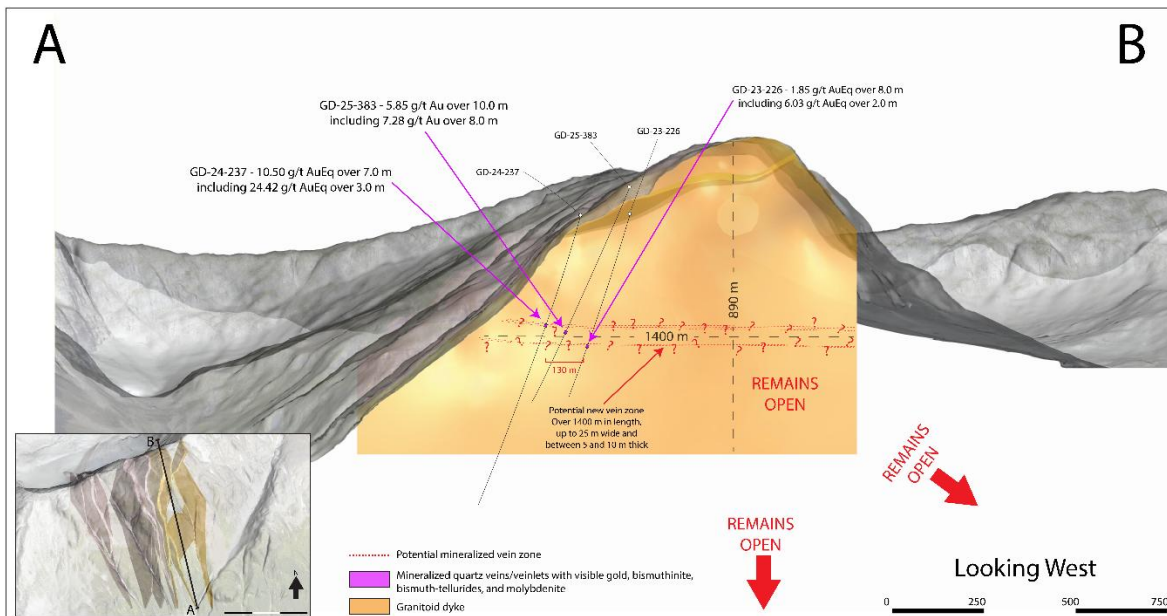
- The Whopper Zone has a strike of 800 meters N-S and 450 meters E-W containing 12 lodes up to 6 meters thick with a combined thickness of up to 30 meters and intercepts up to 32.67 g/t AuEq (32.56 g/t Au and 8.92 g/t Ag) over 4.00 m (drill hole GD-24-262) and remains open for expansion.



- The Eldorado Zone has a strike of 680 meters E-W and 700 meters N-S containing 2 lodes up to 5 meters thick with a combined thickness of up to 7 meters and intercepts up to 7.91 g/t AuEq (7.44 g/t Au and 22.40 g/t Ag) over 7.15 m (drill hole GD-23-221) and remains open for expansion.

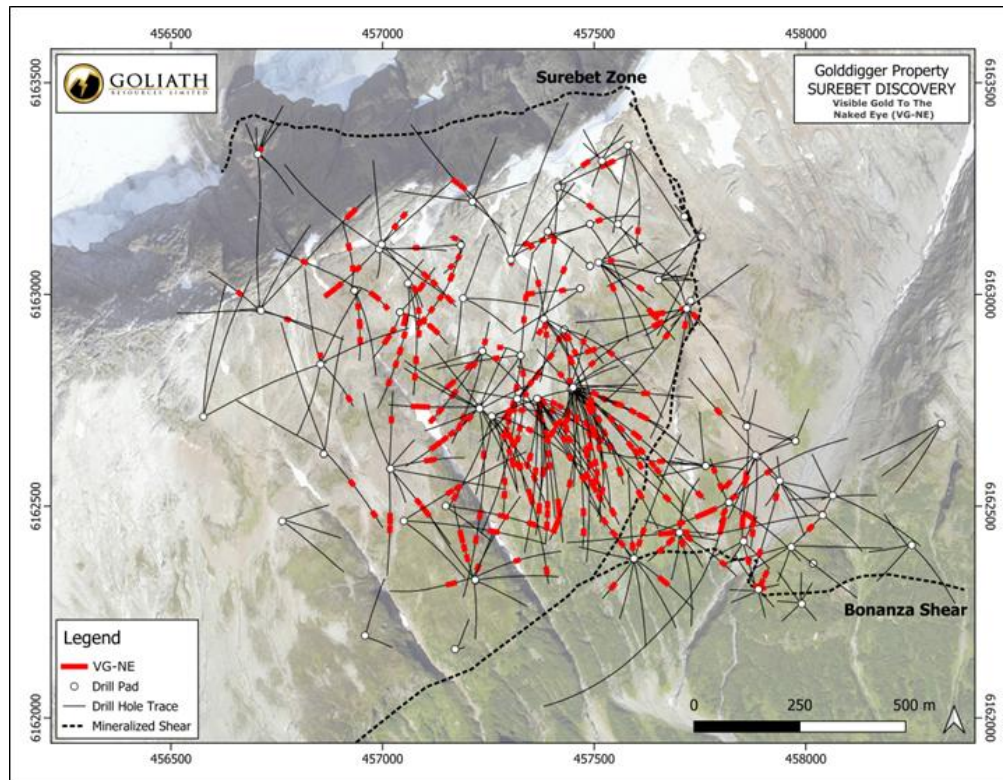


- The gold-rich Eocene-aged dykes extend for up to 1.4 km N-S and a vertical relief of up to 890 meters with widths up to 25 meters and intercepts up to 12.03 g/t AuEq (11.84 g/t Au and 15.61 g/t Ag) over 10.00 meters (drill hole GD-22-58) and remain open for expansion.



UPDATED 3D MODEL VIDEO ([CLICK HERE](#))

- 100% of the drill holes completed to date on the Surebet Discovery have intersected substantial quartz-sulphide mineralization. In 2025, VG-NE was observed in 83 drill holes out of 110 (or 76%).
- 355 out of 386 representing 92% drilled to date at the Surebet Discovery contain VG-NE (see heat map below).



- The remarkable continuity, widths and grades demonstrated by drilling in multiple lodes shows this extensive 1.8 km² gold system continues to demonstrate strong potential to become one of the most significant gold discoveries in British Columbia's Golden Triangle in many years. The strong results received to date will help vector in on drilling targets that remain open with excellent expansion potential.
- High-grade gold has been identified in three distinct rock packages discovered to date at the Surebet Discovery. This includes the gently dipping gold-rich stacked quartz-sulphide breccias/stockwork veins; the gold-rich intermediate to felsic Eocene-aged dykes; and the recently discovered broad gold-rich zones of calc-silicate altered breccia. All mineralized rock types contain substantial amounts of VG-NE (from fine-grained to coarse-grained gold) and remain open for expansion. This confirms the presence of a Motherlode magmatic source nearby, a causative intrusion responsible for the extensive 1.8 km² high-grade gold system at Surebet.

Toronto, Ontario – January 20, 2026 – Goliath Resources Limited (TSX-V: GOT) (OTCQB: GOTRF) (FSE: B4IF) (the “Company” or “Goliath”) is pleased to report assay results (gold only) for the remaining holes from the 2025 drill campaign at the Surebet Discovery on its 100% controlled Golddigger Property (the “Property”), Golden Triangle, British Columbia. Highlights include drill hole GD-25-319 which intersected 19.13 g/t Au over 6.10 meters as well as drill hole GD-25-405 which intersected 10.58 g/t Au over 8.30 meters. Every drill hole completed so far, including all 110 holes from the 2025 season, has successfully intersected gold mineralization. These results confirm predictable continuity, grade, and width across 5 Gold-Rich Zones and 46 Distinct Lodes, all of which remain open for expansion. The fully funded 2026 drill program will focus on expanding the 5 Main Mineralized Zones, testing the Motherlode causative intrusive source, and build toward a future resource.



Dr. Quinton Hennigh, Geologic & Technical Advisor to Crescat Capital, a strategic investor in Goliath, states: *“The consistent reporting of thick high-grade gold intercepts from Surebet is remarkable. Yet again, we see in this news release several more holes that demonstrate the strong predictability of this lode system. Visible gold in core consistently delivers strong assays. While we have to remain patient to see the gold equivalent results from the final 110 drill holes, the confidence around the continuity of these lodes, their thickness and grade is growing with every release. Goliath is doing a great job to continually update the geologic model, with the assistance from the Colorado School of Mines, to show the remarkable Surebet gold discovery.”*

Mr. Roger Rosmus, Founder & CEO of Goliath states: *“The Surebet high-grade gold discovery continues to grow during every new season of drilling. To date, we have discovered a series of stacked gently dipping high-grade gold veins analogous to the Pogo mine in Alaska. In addition, we have started to drill into a series of vertical Eocene-aged RIRG dykes were emplaced roughly the same as the stack veins. We have yet to find the limits of the stacked veins and RIRG dykes, which all remain open, or the source of where they come from, but we are excited about using them to vector into the Motherlode source. What is outstanding about the various high-grade gold mineralization is the vast distribution VG-NE over a large area, which makes the Surebet discovery unique. Another intriguing aspect of the VG-NE is that at the top of the system it is fine-grained and sporadic and as we drill deeper into the system it becomes abundant and course-grained. Which has us excited about following it toward the source. We have two sets of stacked veins (the Surebet series and Bonanza series) that dip in opposite directions but come together at the Hinge Zone. It is becoming clearer, especially through our 2025 drilling campaign, that the Hinge Zone has the potential to be a starter zone for underground high-grade gold bulk mining. Our team, including key people at the Colorado School of Mines, are excited about the advanced geological studies to help us prepare for the 2026 drilling season. We are in the best financial position the company has ever been in as we are fully funded for our 2026 drilling campaign and are looking forward to expanding on the tremendous Surebet high-grade gold discovery.”*

Assay results from the recently concluded 64,364-meter drill program have significantly expanded the high-grade footprint of the Surebet Discovery, which remains open for further growth. An updated geological model incorporating all 2025 data identifies 5 primary mineralized Zones: Bonanza, Surebet, Golden Gate, Whopper, and Eldorado. Collectively these Zones comprise 46 gold-rich lodes and associated Eocene-aged RIRG dykes.

Table 1: Five main modelled gold rich zones and dykes.

Zone	Number of lodes	Dimensions	Key Intercept	Status
Bonanza	5	1.8 km x 1.1 km x 19 m	13.53 g/t AuEq over 11 m	Remains Open
Surebet	9	1.2 km x 930 m x 19 m	21.08 g/t AuEq over 23 m	Remains Open
Golden Gate	18	1.3 km x 820 m x 14 m	34.52 g/t AuEq over 39 m	Remains Open
Whopper	12	800 m x 450 m x 6 m	32.67 g/t AuEq over 4 m	Remains Open
Eldorado	2	680 m x 700 m x 5 m	7.91 g/t AuEq over 7.15 m	Remains Open
Gold-rich dykes		1.4 km x 890 m x 25 m	12.03 g/t AuEq over 10 m	Remains Open

Reported assay results from the 2025 drill campaign have yielded several high-grade gold intercepts across the Golden Gate, Bonanza, and Surebet Zones, characterized by frequent occurrences of VG-NE, as well as substantial sulphide mineralization. Highlights include drill hole GD-25-319 which intersected 19.13 g/t Au over 6.10 meters, including 22.86 g/t Au over 5.10 meters, including 29.09 g/t Au over 4.00 meters from the Golden Gate Zone. Drill hole GD-25-405 which intersected 10.58 g/t Au over 8.30 meters, including 14.04 g/t Au over 6.25 meters including 15.50 g/t Au over 5.60 meters from the Bonanza Zone, and drill hole GD-25-312 which intersected 10.56 g/t Au over 3.70 meters from the Surebet Zone. The gold grades, coupled with VG-NE within substantial quartz-sulphide veins, stockworks, and breccias, which are



mineralized with sphalerite, pyrrhotite, and chalcopyrite, highlight the potential for further expansion. These intercepts are approximately true width, and the assays reflect gold only. Multi-element gold equivalent grades for all drill holes will be released once all assays have been received, compiled and interpreted in the near future. See Table 2 below for a full list of assay results for all the remaining holes of the 2025 drill campaign.

High-grade gold has been identified in three distinct rock packages discovered to date at the Surebet Discovery. This includes the gently dipping gold-rich stacked quartz-sulphide breccias/stockwork veins; the gold-rich intermediate to felsic gold-rich dykes; and the recently discovered broad gold-rich zones of calc-silicate altered breccia. All mineralized rock types contain substantial amounts of VG-NE (from fine-grained to coarse-grained gold) and remain open for expansion. This confirms the presence of a Motherlode magmatic source nearby, a causative intrusion responsible for the extensive 1.8 km² high-grade gold system at Surebet.

The remarkable continuity, widths and grades encountered across multiple lodes underscore the significance of this 1.8 km² gold system which has strong potential to become one of the most significant gold discoveries in British Columbia's Golden Triangle in many years. Success to date has effectively vectored toward several open targets, providing a strong foundation for further expansion in the 2026 drilling campaign.

Surebet Discovery Highlights

- Assay results are still pending for 110 holes from the 2025 exploration campaign for the gold equivalent (AuEq) values, that will be announced once received, compiled and interpreted.
- 83 out of 110 holes (or 76%) drilled in 2025 contain VG-NE, 100% of holes drilled to date at the Surebet Discovery have intersected substantial quartz-sulphide mineralization. See news releases dated: November 17, 2025, October 27, 2025, September 22, 2025, September 8, 2025, August 26, 2025, and July 28, 2025.
- 60 out of 64 holes (or 94%) drilled in 2024 contain VG-NE up to 11.5 mm (7/16 inches) in size, all of which returned high-grade gold. See news releases dated: July 7, 2025, June 23, 2025, January 7, 2025, January 13, 2025, February 10, 2025, February 18, 2025, February 27, 2025, December 12, 2024 and July 30, 2024.
- 92% of the holes (355 out of 386) drilled to date at Surebet contain VG-NE (see heat map above).
- The best hole drilled to date is GD-24-260 previously reported from the Bonanza Zone assayed 34.52 g/t AuEq (34.47 Au and 3.96 Ag) over 39.00 meters, including 132.93 g/t AuEq (132.78 Au and 12.98 Ag) over 10.00 meters, and 166.04 g/t AuEq (165.84 Au and 16.07 Ag) over 8.00 meters (see news release dated January 13, 2025).). More details on the QA/QC protocol can be found in the section titled "QA/QC Protocol" below.
- The best hole drilled to date from the RIRG Eocene-aged dykes is GD-22-58 that assayed 12.03 g/t AuEq (11.84 g/t Au and 15.61 g/t Ag) over 10.00 meters including 19.91 g/t AuEq (19.62 g/t Au and 25.61 g/t Ag) over 6.00 meters, including 23.82 g/t AuEq (23.47 g/t Au and 30.54 g/t Ag) over 5.00 meters, plus a second separate interval down hole of 8.59 g/t AuEq (8.35 g/t Au and 20.74 g/t Ag) over 5.00 meters (see news release dated March 13, 2025).). More details on the QA/QC protocol can be found in the section titled "QA/QC Protocol" below.
- The best hole drilled to date from the third distinct rock package consisting of calc-silicate altered breccia is drill hole GD-25-337, which intersected 10.60 g/t Au over 22.82 meters, including 15.19 g/t Au over 15.71 meters, including two separate intervals consisting of 37.28 g/t Au or 1.20 oz/t Au over 3.36 meters and 36.11 or 1.16 oz/t Au over 3.08 meters. The intercept is approximately true width, and these assays reflect gold only (AuEq value in

the interval will be adjusted accordingly once Ag, Cu, Pb and Zn are received and interpreted). More details on the QA/QC protocol can be found in the section titled “QA/QC Protocol” below.

- Multiple gently dipping gold-mineralized stacked veins have been identified every year on the Surebet high-grade gold discovery. Recent discoveries include gold-rich RIRG dykes, Goldilocks Zones where the veins and vertical dykes crosscut (which are characterized by having high-grade gold in two temperature regimes) and recently discovered high-grade gold in a third distinct rock package characterized by calc-silicate altered breccia, which increases potential tonnage and gold content of the high-grade gold system at the Surebet Discovery.
- The footprint of the mineralization discovered to date at Surebet is 1.8 km² and remains open in all directions.
- Thanks to the mountainous topography, mineralization in the veins is exposed on the surface for 2.1 km of strike (1.0 km on the south slope and 1.1 km on the north slope) with a vertical relief of 700 meters.
- A study completed by the Colorado School of Mines confirms a new interpretation of the ore forming process of high-grade gold mineralization at Surebet and outlines a common magmatic source for the high-grade gold system, now in three distinct rock packages. Which gives the Surebet untapped discovery potential to increase tonnage and gold content in the various known rock packages. Until this study, researchers and explorers in the Golden Triangle had not recognized the high-grade gold discovery potential in the Eocene-aged RIRG dykes (see news release March 13, 2025), which is showing the potential that these discoveries could be a geological breakthrough in the Golden Triangle of British Columbia.
- Goliath has drilled over 156,000 meters with over 600 pierce points in the Surebet Discovery located at the Golddigger property between 2021 and 2025.
- The Surebet Discovery has predictable continuity and good metallurgy with gold recoveries of 92.2% from gravity and flotation at a 327-micrometer crush including 48.8% free gold recovery from gravity alone (no cyanide required to recover the gold). The metallurgy completed to date shows a benign rock composition without deleterious elements (see news release March 1, 2023).
- Based on positive grassroots exploration and drill results in recent years, Goliath significantly increased its land package from 66,608 hectares to 91,518 hectares (226,146 acres) and now controls 56 kilometers of key terrain of the Red Line geologic trend providing for additional discovery potential.
- The Golddigger Property is located on tidewater with a barge route to Prince Rupert (190 km south) and close to infrastructure including the town of Kitsault adjacent to a permitted mine site on private property.

Table 2: Gold-only assay results from remaining 70 drill holes from 2025.

Hole ID		From (m)	To (m)	Interval (m)	Au (g/t)
GD-25-319	Interval	484.00	487.00	3.00	1.90
	Interval	485.00	486.00	1.00	5.65
	Interval	510.00	527.00	17.00	1.07
	Including	510.00	523.00	13.00	1.31
	Including	516.05	523.00	6.95	1.97
	Including	516.05	522.10	6.05	2.23
	Interval	564.10	570.20	6.10	19.13
	Including	565.10	570.20	5.10	22.86

Hole ID		From (m)	To (m)	Interval (m)	Au (g/t)
	Including	565.10	569.10	4.00	29.09
GD-25-405	Interval	84.00	87.25	3.25	2.47
	Interval	165.70	174.00	8.30	10.58
	including	166.75	173.00	6.25	14.04
	including	166.75	172.35	5.60	15.50
	including	166.75	170.50	3.75	21.09
GD-25-312	Interval	390.30	394.00	3.70	10.56
GD-25-345	Interval	3.09	6.87	3.78	3.83
	Interval	354.36	358.15	3.79	3.92
	Interval	615.00	621.00	6.00	4.47
	including	616.00	620.00	4.00	6.68
	including	616.00	619.36	3.36	7.93
GD-25-330	Interval	533.00	536.55	3.55	7.48
	Interval	534.14	535.48	1.34	19.51
GD-25-326	Interval	299.00	302.00	3.00	8.57
GD-25-401	Interval	38.07	46.96	8.89	2.96
	including	39.00	44.00	5.00	4.89
	Interval	57.00	61.11	4.11	3.00
	including	57.00	60.00	3.00	3.41
	Interval	431.75	434.85	3.10	2.40
GD-25-349	Interval	85.00	89.00	4.00	5.50
	Including	86.00	89.00	3.00	7.34
	Interval	95.38	99.00	3.62	1.11
GD-25-367	Interval	388.00	393.00	5.00	2.69
	Interval	523.00	526.00	3.00	7.10
GD-25-407	Interval	253.83	257.09	3.26	5.85
GD-25-395	Interval	302.00	319.00	17.00	1.11
	Including	306.00	318.00	12.00	1.51
	Including	309.49	316.15	6.66	2.16
	Including	311.90	316.15	4.25	3.03
GD-25-332	Interval	416.00	422.00	6.00	3.02
	including	417.00	421.00	4.00	4.49
	including	417.00	420.00	3.00	5.90
GD-25-389	Interval	125.00	135.00	10.00	1.16
	including	125.90	129.00	3.10	2.43
	Interval	155.00	163.00	8.00	1.83
	including	159.00	162.00	3.00	4.62
GD-25-393	Interval	385.00	390.00	5.00	3.78
	Including	386.80	390.00	3.20	5.89
GD-25-382	Interval	4.73	16.00	11.27	1.44
	Including	7.00	16.00	9.00	1.72

Hole ID		From (m)	To (m)	Interval (m)	Au (g/t)
	Including	10.00	16.00	6.00	2.41
	Including	10.00	14.00	4.00	3.13
	Interval	65.00	71.00	6.00	1.05
	Including	66.00	70.00	4.00	1.56
	Interval	99.11	103.00	3.89	1.48
GD-25-396	Interval	127.15	130.97	3.82	4.01
	including	244.00	247.19	3.19	2.47
GD-25-305	Interval	259.03	263.00	3.97	2.51
	Interval	547.53	553.00	5.47	1.25
	Including	547.53	550.85	3.32	1.69
	Interval	585.00	596.00	11.00	1.30
	Including	588.00	595.02	7.02	1.93
	Including	588.00	592.97	4.97	2.59
	Including	589.11	592.97	3.86	3.27
GD-25-323	Interval	309.54	314.00	4.46	1.38
	Including	310.17	314.00	3.83	1.59
	Interval	588.80	592.50	3.70	3.71
GD-25-334	Interval	397.00	408.00	11.00	1.24
	including	404.00	407.00	3.00	3.91
GD-25-366	Interval	62.05	66.00	3.95	3.34
	Interval	483.00	486.00	3.00	3.87
GD-25-381	Interval	265.00	269.00	4.00	3.32
	including	265.00	268.00	3.00	4.33
GD-25-390	Interval	187.75	193.00	5.25	2.38
	including	188.80	192.00	3.20	3.87
GD-25-335	Interval	236.00	240.00	4.00	2.79
	including	236.00	239.00	3.00	3.71
	Interval	258.00	270.00	12.00	1.06
	including	262.05	270.00	7.95	1.32
GD-25-327	Interval	25.00	26.00	1.00	2.11
	Interval	107.00	111.00	4.00	2.99
	Including	108.00	111.00	3.00	3.98
	Interval	275.00	282.00	7.00	1.52
	Including	276.00	282.00	6.00	1.77
	Including	276.00	281.00	5.00	2.09
	Including	277.00	280.00	3.00	3.12
GD-25-368	Interval	592.00	597.88	5.88	2.03
	Including	592.00	596.69	4.69	2.54
GD-25-342	Interval	28.85	38.00	9.15	1.04
	Including	31.00	38.00	7.00	1.25
	Including	34.00	38.00	4.00	1.30

Hole ID		From (m)	To (m)	Interval (m)	Au (g/t)
	Including	35.00	38.00	3.00	1.66
	Interval	249.10	252.10	3.00	2.05
	Interval	250.25	251.25	1.00	6.11
GD-25-316	Interval	204.00	208.00	4.00	1.08
	Interval	356.96	363.65	6.69	1.70
	Including	357.82	362.50	4.68	2.39
	Interval	365.85	369.00	3.15	1.24
GD-25-337	Interval	138.50	148.50	10.00	1.09
	Interval	52.00	55.00	3.00	2.29
GD-25-375	including	216.21	220.00	3.79	2.39
GD-25-363	Interval	313.46	320.00	6.54	1.63
	Including	314.09	319.00	4.91	2.15
	Including	314.09	318.00	3.91	2.63
GD-25-329	Interval	215.91	224.02	8.11	1.01
	Including	215.91	221.00	5.09	1.45
	Including	215.91	219.00	3.09	1.91
	Interval	317.00	322.12	5.12	1.95
	Including	317.00	321.00	4.00	2.49
	Including	318.00	321.00	3.00	3.29
GD-25-357	Interval	215.00	223.00	8.00	1.05
	Including	217.00	223.00	6.00	1.26
	Interval	347.00	350.00	3.00	2.26
	Interval	348.00	349.00	1.00	6.72
GD-25-308	Interval	335.00	338.00	3.00	1.09
	Interval	405.00	408.00	3.00	1.55
GD-25-301	Interval	301.00	305.00	4.00	2.26
	Including	302.00	305.00	3.00	3.00
	Interval	415.00	419.00	4.00	2.47
	Interval	535.24	542.13	6.89	1.16
	Including	535.24	541.05	5.81	1.33
	Including	537.39	541.05	3.66	1.66
GD-25-394	Interval	118.00	121.85	3.85	1.02
GD-25-403	Interval	254.02	258.00	3.98	2.35
	Interval	255.00	256.05	1.05	8.70
GD-25-303	Interval	488.00	493.00	5.00	1.09
	Including	488.00	491.00	3.00	1.31
	Interval	526.00	529.00	3.00	1.09
	Interval	532.00	536.04	4.04	1.21
	Including	532.00	535.00	3.00	1.25
GD-25-386	Interval	293.34	297.60	4.26	1.26
	Including	294.38	297.60	3.22	1.66

Hole ID		From (m)	To (m)	Interval (m)	Au (g/t)
	Interval	300.85	301.95	1.10	2.60
	Including	324.79	329.00	4.21	1.97
	Including	324.79	328.02	3.23	2.49
GD-25-352	Interval	338.00	343.00	5.00	1.74
	Interval	374.00	377.02	3.02	1.98
	Interval	375.00	376.00	1.00	5.92
GD-25-351	Interval	418.00	423.00	5.00	1.44
	Including	420.00	423.00	3.00	2.05
	Interval	511.00	514.00	3.00	1.79
	Interval	512.00	513.00	1.00	5.22
GD-25-344	Interval	215.82	220.94	5.12	1.59
	Including	216.80	220.94	4.14	1.96
	Including	217.62	220.94	3.32	2.38
GD-25-399	Interval	58.50	61.50	3.00	2.71
	Interval	59.00	60.50	1.50	5.34
GD-25-333	Interval	6.00	9.00	3.00	2.53
	Interval	7.00	8.00	1.00	7.54
GD-25-306	Interval	135.00	141.00	6.00	1.25
	Including	135.00	139.00	4.00	1.62
	Interval	281.70	282.35	0.65	1.47
GD-25-325	Interval	40.10	41.00	0.90	1.67
	Interval	454.40	458.85	4.45	1.11
	Including	456.70	460.00	3.30	1.34
	Interval	576.00	579.00	3.00	2.44
	Interval	577.20	578.00	0.80	8.95
GD-25-371	Interval	545.10	549.00	3.90	0.68
GD-25-406	Interval	122.00	125.00	3.00	1.70
	Interval	137.00	143.00	6.00	1.20
	Including	139.00	142.00	3.00	2.20
GD-25-400	Interval	10.00	16.00	6.00	1.18
	Interval	125.00	131.00	6.00	1.02
GD-25-331	Interval	146.00	151.00	5.00	1.00
	Including	148.00	151.00	3.00	1.26
GD-25-361	Interval	303.80	310.08	6.28	1.06
	Including	307.00	310.08	3.08	1.49
	Interval	315.00	318.00	3.00	1.08
	Interval	540.00	544.05	4.05	1.28
	Interval	542.00	542.85	0.85	5.72
GD-25-391	Interval	467.00	481.00	14.00	0.45
GD-25-314	Interval	138.00	141.00	3.00	2.12
GD-25-322	Interval	28.00	29.00	1.00	1.39

Hole ID		From (m)	To (m)	Interval (m)	Au (g/t)
	Interval	166.00	169.00	3.00	1.08
GD-25-309	Interval	296.03	299.07	3.04	1.72
	Interval	296.92	298.00	1.08	4.80
GD-25-341	Interval	205.86	210.00	4.14	1.20
	Including	205.86	209.00	3.14	1.51
	Interval	205.86	206.82	0.96	4.75
	Interval	394.00	399.00	5.00	1.04
	Including	395.00	398.03	3.03	1.68
GD-25-348	Interval	217.43	222.05	4.62	1.09
	Including	217.43	221.12	3.69	1.34
	Interval	916.50	919.80	3.30	1.12
	Interval	917.52	918.73	1.21	2.98
GD-25-379	Interval	288.00	291.74	3.74	1.15
	Interval	494.00	497.88	3.88	1.02
	Interval	496.00	497.00	1.00	3.71
	Interval	531.20	532.30	1.10	2.26
GD-25-346	Interval	220.88	225.00	4.12	1.03
	Including	221.84	225.00	3.16	1.33
GD-25-315	Interval	224.00	227.00	3.00	1.22
	Interval	225.00	226.00	1.00	3.52
GD-25-364	Interval	253.80	256.65	2.85	1.26
	Interval	254.80	255.65	0.85	4.05
GD-25-339	Interval	635.75	639.00	3.25	1.09
	Interval	636.48	637.32	0.84	3.95
GD-25-388	Interval	101.00	102.15	1.15	2.14
GD-25-397	Interval	184.00	188.00	4.00	0.86
GD-25-336	Interval	224.00	225.00	1.00	1.20
	Interval	229.00	232.00	3.00	1.09
	Interval	230.00	231.00	1.00	3.11
GD-25-384	Interval	422.00	423.00	1.00	1.79
	Interval	547.00	548.00	1.00	1.20
GD-25-402	Interval	196.00	197.25	1.25	2.44
GD-25-338	Interval	426.00	429.00	3.00	0.80
GD-25-369	Interval	667.00	671.00	4.00	0.70
GD-25-409	Interval	124.00	127.00	3.00	0.79
GD-25-307	Interval	304.78	305.66	0.88	2.64
	Interval	410.36	411.51	1.15	1.94
	Interval	410.36	411.51	1.15	1.94
GD-25-392	Interval	93.57	94.80	1.23	1.09
GD-25-404	Interval	183.00	186.00	3.00	0.44
GD-25-340	Interval	367.45	370.47	3.02	0.36

Hole ID		From (m)	To (m)	Interval (m)	Au (g/t)
GD-25-347	Interval	334.00	335.00	1.00	1.70
GD-25-353	Interval	292.96	294.00	1.04	1.07
GD-25-320	Interval	216.00	219.00	3.00	0.48
GD-25-408	Interval	111.00	115.08	4.08	0.25
GD-25-310	Interval	150.00	151.00	1.00	1.08
GD-25-304	Interval	255.00	256.00	1.00	0.69

Table 4: Collar information for drill holes reported in this news release.

Hole ID	CRS	Easting (m)	Northing (m)	Elevation (m)	Azimuth (deg)	Dip (deg)	Length (m)
GD-25-301	NAD83 / UTM zone 9N	457445	6162773	1513	168	58	702
GD-25-303	NAD83 / UTM zone 9N	457364	6162754	1508	157	61	676
GD-25-304	NAD83 / UTM zone 9N	457214	6162332	1220	320	55	308
GD-25-305	NAD83 / UTM zone 9N	457447	6162774	1513	155	54	687
GD-25-306	NAD83 / UTM zone 9N	457214	6162332	1220	342	59	346
GD-25-307	NAD83 / UTM zone 9N	456927	6163020	1651	152	72	678
GD-25-308	NAD83 / UTM zone 9N	457364	6162756	1509	160	67	705
GD-25-309	NAD83 / UTM zone 9N	456710	6162964	1638	295	89	612
GD-25-310	NAD83 / UTM zone 9N	457214	6162332	1219	28	62	509
GD-25-312	NAD83 / UTM zone 9N	457365	6162756	1509	150	71	681
GD-25-314	NAD83 / UTM zone 9N	457018	6162591	1387	80	70	593
GD-25-315	NAD83 / UTM zone 9N	457218	6162331	1219	63	63	486
GD-25-316	NAD83 / UTM zone 9N	456927	6163020	1651	150	76	723
GD-25-319	NAD83 / UTM zone 9N	457365	6162754	1505	141	62	629
GD-25-320	NAD83 / UTM zone 9N	457215	6162328	1219	170	70	367
GD-25-322	NAD83 / UTM zone 9N	457214	6162332	1219	250	70	594
GD-25-323	NAD83 / UTM zone 9N	456927	6163020	1652	90	80	620
GD-25-325	NAD83 / UTM zone 9N	457365	6162755	1509	128	88	669
GD-25-326	NAD83 / UTM zone 9N	457236	6162867	1586	23	80	734
GD-25-327	NAD83 / UTM zone 9N	457016	6162593	1388	5	65	459
GD-25-329	NAD83 / UTM zone 9N	457444	6162778	1515	330	80	685
GD-25-330	NAD83 / UTM zone 9N	457326	6162856	1582	206	73	681
GD-25-331	NAD83 / UTM zone 9N	457815	6162506	1144	194	83	360
GD-25-332	NAD83 / UTM zone 9N	456927	6163020	1653	10	75	708
GD-25-333	NAD83 / UTM zone 9N	457365	6162757	1509	127	71	798
GD-25-334	NAD83 / UTM zone 9N	457236	6162741	1490	128	66	696
GD-25-335	NAD83 / UTM zone 9N	457015	6162587	1387	180	60	498
GD-25-336	NAD83 / UTM zone 9N	456710	6162961	1639	315	75	606
GD-25-337	NAD83 / UTM zone 9N	457813	6162507	1145	244	62	370
GD-25-338	NAD83 / UTM zone 9N	457445	6162774	1514	173	69	621
GD-25-339	NAD83 / UTM zone 9N	457236	6162865	1586	120	70	792
GD-25-340	NAD83 / UTM zone 9N	456861	6162631	1451	300	55	405

Hole ID	CRS	Easting (m)	Northing (m)	Elevation (m)	Azimuth (deg)	Dip (deg)	Length (m)
GD-25-341	NAD83 / UTM zone 9N	456927	6163020	1652	310	75	615
GD-25-342	NAD83 / UTM zone 9N	457815	6162511	1146	336	70	350
GD-25-344	NAD83 / UTM zone 9N	457319	6162857	1585	265	77	705
GD-25-345	NAD83 / UTM zone 9N	457366	6162757	1509	120	52	822
GD-25-346	NAD83 / UTM zone 9N	456863	6162632	1452	340	45	471
GD-25-347	NAD83 / UTM zone 9N	456710	6162961	1639	270	65	442
GD-25-348	NAD83 / UTM zone 9N	457413	6163252	1733	115	65	1001
GD-25-349	NAD83 / UTM zone 9N	457817	6162512	1145	50	65	756
GD-25-351	NAD83 / UTM zone 9N	457235	6162738	1489	170	57	723
GD-25-352	NAD83 / UTM zone 9N	457038	6162952	1604	42	76	847
GD-25-353	NAD83 / UTM zone 9N	456864	6162633	1453	7	56	501
GD-25-357	NAD83 / UTM zone 9N	456865	6162628	1451	135	65	525
GD-25-361	NAD83 / UTM zone 9N	457191	6163128	1712	160	85	699
GD-25-363	NAD83 / UTM zone 9N	457411	6163251	1733	175	68	901
GD-25-364	NAD83 / UTM zone 9N	457464	6163017	1633	230	80	795
GD-25-366	NAD83 / UTM zone 9N	457399	6162901	1606	211	69	705
GD-25-367	NAD83 / UTM zone 9N	457235	6162864	1585	213	74	651
GD-25-368	NAD83 / UTM zone 9N	457485	6163165	1706	250	77	690
GD-25-369	NAD83 / UTM zone 9N	457319	6162859	1585	310	85	738
GD-25-371	NAD83 / UTM zone 9N	457190	6163130	1712	40	86	681
GD-25-375	NAD83 / UTM zone 9N	457486	6163164	1706	250	85	747
GD-25-379	NAD83 / UTM zone 9N	457189	6163129	1712	268	85	614
GD-25-381	NAD83 / UTM zone 9N	457511	6163074	1660	115	66	360
GD-25-382	NAD83 / UTM zone 9N	457591	6162372	1119	215	45	160
GD-25-384	NAD83 / UTM zone 9N	457233	6162865	1585	255	78	674
GD-25-386	NAD83 / UTM zone 9N	457512	6163073	1660	129	56	459
GD-25-388	NAD83 / UTM zone 9N	457879	6162621	1179	270	65	498
GD-25-389	NAD83 / UTM zone 9N	457849	6162680	1209	170	70	483
GD-25-390	NAD83 / UTM zone 9N	457488	6163166	1707	70	80	792
GD-25-391	NAD83 / UTM zone 9N	457465	6163019	1634	286	76	618
GD-25-392	NAD83 / UTM zone 9N	457757	6162595	1200	280	55	423
GD-25-393	NAD83 / UTM zone 9N	457322	6162859	1585	5	68	702
GD-25-394	NAD83 / UTM zone 9N	457594	6162372	1119	168	55	345
GD-25-395	NAD83 / UTM zone 9N	457402	6162902	1606	105	65	801
GD-25-396	NAD83 / UTM zone 9N	457758	6162596	1201	284	75	274
GD-25-397	NAD83 / UTM zone 9N	457850	6162683	1211	20	75	412
GD-25-399	NAD83 / UTM zone 9N	457760	6162596	1201	356	64	288
GD-25-400	NAD83 / UTM zone 9N	457598	6162374	1119	147	83	309
GD-25-401	NAD83 / UTM zone 9N	457881	6162620	1179	210	80	600
GD-25-402	NAD83 / UTM zone 9N	457972	6162658	1175	292	48	249
GD-25-403	NAD83 / UTM zone 9N	457467	6163017	1633	147	83	600

Hole ID	CRS	Easting (m)	Northing (m)	Elevation (m)	Azimuth (deg)	Dip (deg)	Length (m)
GD-25-404	NAD83 / UTM zone 9N	457848	6162684	1211	325	55	348
GD-25-405	NAD83 / UTM zone 9N	457763	6162595	1200	82	75	312
GD-25-406	NAD83 / UTM zone 9N	457973	6162657	1174	281	71	246
GD-25-407	NAD83 / UTM zone 9N	457399	6162904	1608	350	82	395
GD-25-408	NAD83 / UTM zone 9N	457972	6162655	1177	230	60	219
GD-25-409	NAD83 / UTM zone 9N	457883	6162622	1178	60	75	302

About Golddigger Property

The Golddigger Property is 100% controlled and covers an area of 91,518 hectares in a highly prospective geological setting of the Eskay Rift, within 3 kilometers of the Red Line in the Golden Triangle of British Columbia. This area, in close proximity to the Red Line, has hosted some of Canada's greatest gold mines including Eskay Creek, Premier and Snip. Other significant and well-known deposits in the Golden Triangle include Brucejack, Copper Canyon, Galore Creek, Granduc, KSM, Red Chris, and Schaft Creek. Goliath controls 56 kilometers of the Red Line which is a geologic contact between Triassic age Stuhini rocks and Jurassic age Hazelton rocks used as key markers when exploring for gold-copper-silver mineralization.

The Surebet discovery has predictable continuity and good metallurgy with gold recoveries from gravity and flotation at a 327-micrometer crush of 92.2% including 48.8% free gold from gravity alone (no cyanide required to recover the gold). The metallurgy completed to date shows no deleterious elements are present (see news release dated March 1, 2023).

The Property is in a well positioned location in close proximity to the communities of Alice Arm and Kitsault where there is a permitted mill site on private property. It is situated on tide water with direct barge access to Prince Rupert (190 kilometers via the Observatory inlet/Portland inlet). The town of Kitsault is accessible by road (190 kilometers from Terrace, 300 kilometers from Prince Rupert) and has a barge landing, dock, and infrastructure capable of housing at least 300 people, including high-tension power.

Additional infrastructure in the area includes the Dolly Varden Silver Mine Road (only 7 kilometers to the East of the Surebet discovery) with direct road access to Alice Arm barge landing (18 kilometers to the south of the Surebet discovery) and high-tension power (25 kilometers to the east of Surebet discovery). The city of Terrace (population 16,000) provides access to railway, major highways, and airport with supplies (food, fuel, lumber, etc.), while the town of Prince Rupert (population 12,000) is located on the West Coast of British Columbia and houses an international container seaport also with direct access to railway and an airport.

About CASERM (Center to Advance the Science of Exploration to Reclamation in Mining)

Goliath Resources is a paying member and active supporter of the Center to Advance the Science of Exploration to Reclamation in Mining (CASERM), which is one of the world's largest research centers in the mining sector. CASERM is a collaborative research venture between Colorado School of Mines and Virginia Tech that is supported by a consortium of mining and exploration companies, analytical instrumentation and software companies, and federal agencies aiming to transform the way geoscience data is acquired and used across the mining value chain. The center forms part of the I-UCRC program of the National Science Foundation. Research focuses on the integration of diverse geoscience data to improve decision making across the mine life cycle, beginning with the exploration for subsurface resources continuing through mine operation as well as closure and environmental remediation. Over the past three years, Goliath Resources' membership in CASERM has allowed a high level of research to be performed on the Surebet Discovery.



Independent Trading Group Engaged As Market Maker

Goliath has engaged the services of Independent Trading Group ("ITG") to provide market-making services in accordance with TSX Venture Exchange TSXV, CSE, Cboe Canada policies subject to regulatory approval. ITG will trade shares of the Company on the TSXV and all other trading venues with the objective of maintaining a reasonable market and improving the liquidity of the Company's common shares.

Under the agreement, ITG will receive compensation of CAD\$6,000 per month, payable monthly in advance. The agreement is for an initial term of one month and will renew for additional one-month terms unless terminated. The agreement may be terminated by either party with 30 days' notice. There are no performance factors contained in the agreement and ITG will not receive shares or options as compensation. ITG and the Company are unrelated and unaffiliated entities and at the time of the agreement, neither ITG nor its principals have an interest, directly or indirectly, in the securities of the Company.

About Independent Trading Group

Independent Trading Group (ITG) Inc. is a Toronto based CIRO dealer-member that specializes in market making, liquidity provision, agency execution, ultra-low latency connectivity, and bespoke algorithmic trading solutions. Established in 1992, with a focus on market structure, execution and trading, ITG has leveraged its own proprietary technology to deliver high quality liquidity provision and execution services to a broad array of public issuers and institutional investors.

RSU Grant

The Company has granted an aggregate of 3,165,000 restricted share units to officers and directors of the Company, which will vest equally over three years, with first vesting occurring after one year. Also, a total of 75,000 restricted share units granted to a consultant which will vest in one year. All restricted share units are subject to the Company's omnibus equity incentive plan.

Qualified Person

Rein Turna P. Geo is the qualified person as defined by National Instrument 43-101, for Goliath Resource Limited projects, and supervised the preparation of, and has reviewed and approved, the technical information in this release. Mr. Turna is an Independent Director of the Company.

About Goliath Resources Limited

Goliath Resources is an explorer of precious metals projects in the highly prospective Golden Triangle of Northwest-ern British Columbia. All of its projects are in high quality geological settings and geopolitical safe jurisdictions amenable to mining in Canada. Goliath is a member and active supporter of CASERM which is an organization that represents a collaborative venture between Colorado School of Mines and Virginia Tech. In 2025, Goliath completed its largest drill campaign to date for a total of 64,364 meters. It is fully funded for a similar sized drill program in 2026. Assay results are still pending for 110 holes from the 2025 exploration campaign for the gold equivalent (AuEq) values, that will be announced once received, compiled and interpreted. The Company's key strategic cornerstone shareholders include Crescat Capital, a Global Commodity Group (Singapore), McEwen Inc. (NYSE: MUX) (TSX: MUX), Waratah Capital Advisors, Rob McEwen, Eric Sprott and Larry Childress.



For more information please contact:

Goliath Resources Limited

Mr. Roger Rosmus

Founder and CEO

Tel: +1.416.488.2887

roger@goliathresources.com

www.goliathresourcesltd.com

Disclaimer

The reader is cautioned that grab samples are spot samples which are typically, but not exclusively, constrained to mineralization. Grab samples are selective in nature and collected to determine the presence or absence of mineralization and are not intended to be representative of the material sampled.

QA/QC Protocol

Oriented HQ-diameter or NQ-diameter diamond drill core from the drill campaign is placed in core boxes by the drill crew contracted by the Company. Core boxes are transported by helicopter to the staging area and then transported by truck to the core shack. The core is then re-orientated, meterage blocks are checked, meter marks are labelled, Recovery and RQD measurements taken, and primary bedding and secondary structural features including veins, dykes, cleavage, and shears are noted and measured. The core is then described and transcribed in MX Deposit™. Drill holes were planned using Leapfrog Geo™ and QGISTM software and data from the 2017-2024 exploration campaigns. Drill core containing quartz breccia, stockwork, veining and/or sulphide(s), or notable alteration is sampled in lengths of 0.5 to 1.5 meters. Core samples are cut lengthwise in half: one-half remains in the box and the other half is inserted in a clean plastic bag with a sample tag. The bagged samples are then weighed and secured with a zip tie. Certified reference materials (CRMs), blanks and duplicates are added in the sample stream at a rate of 10%. To ensure analytical anonymity, CRM identification labels are removed prior to submission to the laboratory. Additional out-of-sequence blanks are introduced immediately following core samples that contain VG-NE or high-grade sulphide mineralization.

Grab, channels, chip and talus samples were collected by foot with helicopter assistance. Prospective areas included, but were not limited to, proximity to MINFile locations, placer creek occurrences, regional soil anomalies, and potential gossans based on high-resolution satellite imagery. The rock grab and chip samples were extracted using a rock hammer, or hammer and chisel to expose fresh surfaces and to liberate a sample of anywhere between 0.5 to 5.0 kilograms. All sample sites were flagged with biodegradable flagging tape and marked with the sample number. All sample sites were recorded using hand-held GPS units (accuracy 3-10 meters) and sample ID, easting, northing, elevation, type of sample (outcrop, subcrop, float, talus, chip, grab, etc.) and a description of the rock were recorded on all-weather paper. Samples are then inserted in a clean plastic bag with a sample tag for transport and shipping to the geochemistry lab. QA/QC samples including blanks, certified reference materials, and duplicate samples are inserted regularly into the sample sequence at a rate of 10%.

All samples are transported in rice bags sealed with numbered security tags. The rice bags are transported from the core shacks to the MSALABS facilities in Terrace, BC. MSALABS is certified with both AC89-IAS and ISO/IEC Standard 17025:2017. The core samples undergo preparation via drying, crushing to ~70% of the material passing a 2 mm sieve and riffle splitting. The sample splits are weighed and transferred into three plastic jars, each containing between 300 g and



500 g of crushed sample material. A 250 g split is pulverized to ensure at least 85% of the material passes through a 75 µm sieve. The crushed samples are transported to the MSALABS PhotonAssay™ facility in Prince George, where gold concentrations are quantified via photon assay analysis (method CPA-Au1). Samples that result in gold concentrations ≥5 ppm are analyzed to extinction. Photon assay uses high-energy X-rays (photons) to excite atomic nuclei within the jarred samples, inducing the emission of secondary gamma rays, which are measured to quantify gold concentrations. The assays from all jars are combined on a weight-averaged basis. Multielement analyses are carried at the MSALABS facilities in Surrey, BC, where 250 g of pulverized splits are analyzed via ICF6xx and IMS-230 methods. The IMS-230 method uses 4-acid digestion (a combination of hydrochloric, nitric, perchloric and hydrofluoric acids) followed by inductively coupled plasma emission spectrometry to quantify concentrations of 48 elements. Samples with over-limit results for Ag, Cu, Pb and Zn undergo ore-grade analysis via the ICF-6xx method (where 'xx' denotes the target metal). This method employs 4-acid digestion followed by inductively coupled plasma emission spectrometry.

Widths are reported in drill core lengths and the true widths are estimated to be 80-90% and Gold Equivalent (AuEq) metal values are calculated using: Au 2797.16 USD/oz, Ag 31.28 USD/oz, Cu 4.25 USD/lbs, Pb 1955.58 USD/ton and Zn 2750.50 USD/ton on January 31st, 2025. There is potential for economic recovery of gold, silver, copper, lead, and zinc from these occurrences based on other mining and exploration projects in the same Golden Triangle Mining Camp where Goliath's project is located such as the Homestake Ridge Gold Project (Auryn Resources Technical Report, Updated Mineral Resource Estimate and Preliminary Economic Assessment on the Homestake Ridge Gold Project, prepared by Minefill Services Inc. Bothell, Washington, dated May 29, 2020). Here, AuEq values were calculated using 3-year running averages for metal price, and included provisions for metallurgical recoveries, treatment charges, refining costs, and transportation. Recoveries for Gold were 85.5%, Silver at 74.6%, Copper at 74.6% and Lead at 45.3%. It will be assumed that Zinc can be recovered with the Copper at the same recovery rate of 74.6%. The quoted reference of metallurgical recoveries is not from Goliath's Golddigger Project, Surebet Zone mineralization, and there is no guarantee that such recoveries will ever be achieved, unless detailed metallurgical work such as in a Feasibility Study can be eventually completed on the Golddigger Project.

Neither the TSX Venture Exchange nor its Regulation Services Provider (as that term is defined in the policies of the TSX Venture Exchange), nor the OTCQB Venture Market accepts responsibility for the adequacy or accuracy of this release.

Certain statements contained in this press release constitute forward-looking information. These statements relate to future events or future performance. The use of any of the words "could", "intend", "expect", "believe", "will", "projected", "estimated" and similar expressions and statements relating to matters that are not historical facts are intended to identify forward-looking information and are based on Goliath's current belief or assumptions as to the outcome and timing of such future events. Actual future results may differ materially. In particular, this release contains forward-looking information relating to, among other things, the ability of the Company to complete financings and its ability to build value for its shareholders as it develops its mining properties. Various assumptions or factors are typically applied in drawing conclusions or making the forecasts or projections set out in forward-looking information. Those assumptions and factors are based on information currently available to Goliath. Although such statements are based on management's reasonable assumptions, there can be no assurance that the proposed transactions will occur, or that if the proposed transactions do occur, will be completed on the terms described above.

The forward-looking information contained in this release is made as of the date hereof and Goliath is not obligated to update or revise any forward-looking information, whether as a result of new information, future events or otherwise, except as required by applicable securities laws. Because of the risks, uncertainties and assumptions contained herein, investors should not place undue reliance on forward-looking information. The foregoing statements expressly qualify any forward-looking information contained herein.



This announcement does not constitute an offer, invitation, or recommendation to subscribe for or purchase any securities and neither this announcement nor anything contained in it shall form the basis of any contract or commitment. In particular, this announcement does not constitute an offer to sell, or a solicitation of an offer to buy, securities in the United States, or in any other jurisdiction in which such an offer would be illegal.

The securities referred to herein have not been and will not be registered under the United States Securities Act of 1933, as amended (the "U.S. Securities Act"), or any state securities laws and may not be offered or sold within the United States or to or for the account or benefit of a U.S. person (as defined in Regulation S under the U.S. Securities Act) unless registered under the U.S. Securities Act and applicable state securities laws or an exemption from such registration is available.